

CARTA DE APROXIMACION
POR INSTRUMENTOS
INSTRUMENT APPROACH
CHART (IAC)

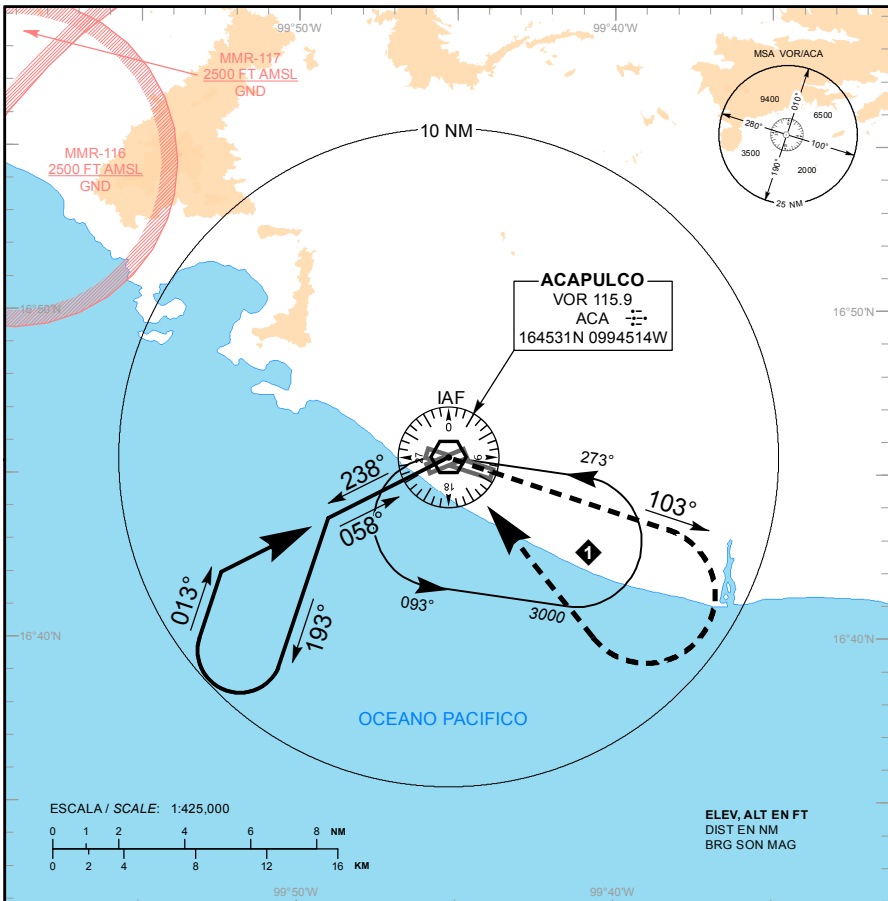
ATIS 115.9
TWR/APP 119.9
TWR 118.5
EMER 121.5

AD ELEV : 15 FT
VAR 5° E

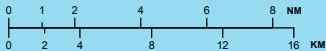
ACAPULCO
AEROPUERTO INTL / INTL AIRPORT
GRAL. JUAN N. ALVAREZ

VOR A

TA: 18500 FT

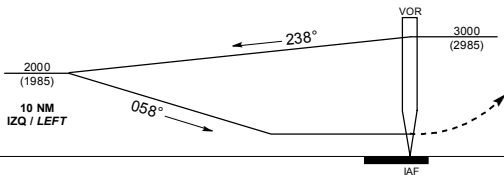


ESCALA / SCALE: 1:425.000



ELEV, ALT EN FT
DIST EN NM
BRG SON MAG

ALTURAS REFERIDAS AL AD ELEV 15 FT
HEIGHTS RELATED TO AD ELEV 15 FT



ELEV AD 15 FT

APROXIMACION FRUSTRADA / MISSED APPROACH

ASCIENDA EN RADIAL 103°. EFECTUE VIRAJE DE GOTAS A LA DERECHA DENTRO DE 10 NM HACIA EL VOR/ACA HASTA LA ALTITUD MINIMA DE ESPERA.

CLIMB VIA ACA VOR R-103°. TURN RIGHT WITHIN 10 NM TO VOR/ACA AT THE MINIMUM HOLDING ALTITUDE.

DISTANCIA MAXIMA DE ALEJAMIENTO 7 NM DESDE EL MAPL
MAXIMUM DISTANCE TO TURN 7 NM FROM MAPL

VEL GS (KTS)	80	100	120	140	160	180	200
MIN : SEC	5:15	4:12	3:30	3:00	2:38	2:20	2:06

CAMBIOS: SIMBOLOGIA

CAT	A	B	C	D
-				
DIRECTO/DIRECT OCA(OCH)/MDA(MDH)				
CIRCULANDO/CIRCLING OCA(OCH)/MDA(MDH)	580 (565) - 1 (1600 M)		580 (565) - 1 1/2 (2400 M)	580 (565) - 2 (3200 M)