

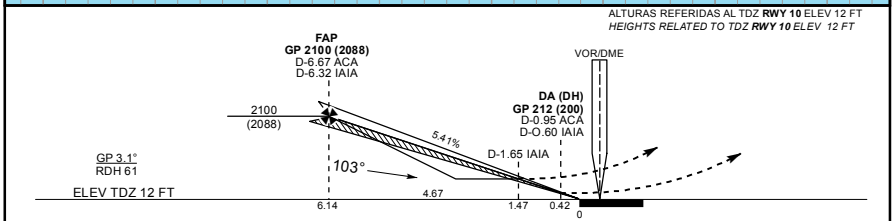
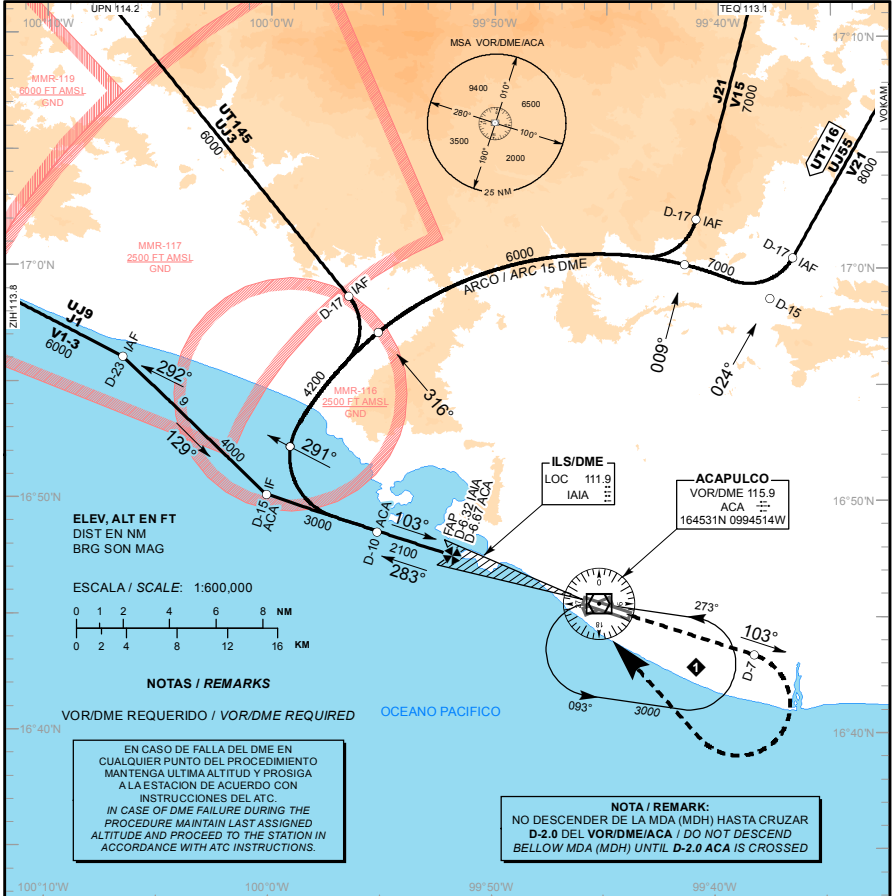
CARTA DE APROXIMACION
POR INSTRUMENTOS
INSTRUMENT APPROACH
CHART (IAC)

ATIS 115.9
TWR/APP 119.9
TWR 118.5
EMER 121.5

AD ELEV : 15 FT
VAR 5° E

ACAPULCO
AEROPUERTO INTL / INTL AIRPORT
GRAL. JUAN N. ALVAREZ
ILS Y OR LOC Y RWY 10

TA: 18500 FT



CAMBIOS: AWY: UJ55; CNL AWY: UJ15

APROXIMACION FRUSTRADA / MISSED APPROACH

ASCIENDA EN RADIAL 103° HASTA D-7, EFECTUE VIRAJE DE GOTTA A LA DERECHA DENTRO DE 10 NM HACIA EL VOR/DME/ACA HASTA LA ALTITUD MINIMA DE ESPERA.

CLIMB VIA ACA VOR R-103° TO D-7, TURN RIGHT WITHIN 10 NM TO VOR/DME/ACA AT THE MINIMUM HOLDING ALTITUDE.

GRADIENTE DE DESCENSO / RATE OF DESCENT

| FAP - THR | VEL GS (KTS) | 80 | 100 | 120 | 140 | 160 | 180 | 200 |
|--------------|--------------|------|------|------|------|------|------|------|
| 6.14 NM | FT / MIN | 439 | 548 | 658 | 768 | 878 | 987 | 1097 |
| 5.41% (3.1°) | MIN : SEC | 4:36 | 3:41 | 3:04 | 2:38 | 2:18 | 2:03 | 1:51 |

ALTITUD MINIMA SEGUN DISTANCIA DME/IAIA / MINIMUM ALTITUDE ACCORDING TO DISTANCE DME/IAIA

| NM | 6.32 | 5 | 4 | 3 |
|----|-------------|-------------|-------------|------------|
| FT | 2100 (2088) | 1666 (1654) | 1337 (1325) | 1008 (996) |

| CAT | A | B | C | D |
|------------------------|-----------------------|--------------------------------|----------------------------|----------------------------|
| CAT I COMPLETEO / FULL | | DA (DH) 212 (200) - 1 (1600 M) | | |
| LOC COMPLETEO / FULL | OCA (OCH) / MDA (MDH) | 580 (568) - 1 (1600 M) | 580 (568) - 1 1/2 (2400 M) | 580 (568) - 1 3/4 (2800 M) |
| CIRCULANDO / CIRCLING | OCA (OCH) / MDA (MDH) | 640 (625) - 1 (1600 M) | 640 (625) - 1 3/4 (2800 M) | 640 (625) - 2 (3200 M) |