

CARTA DE APROXIMACION  
POR INSTRUMENTOS (IAC)

HERMOSILLO / GRAL IGNACIO PESQUEIRA GARCIA INTL (MMHO)

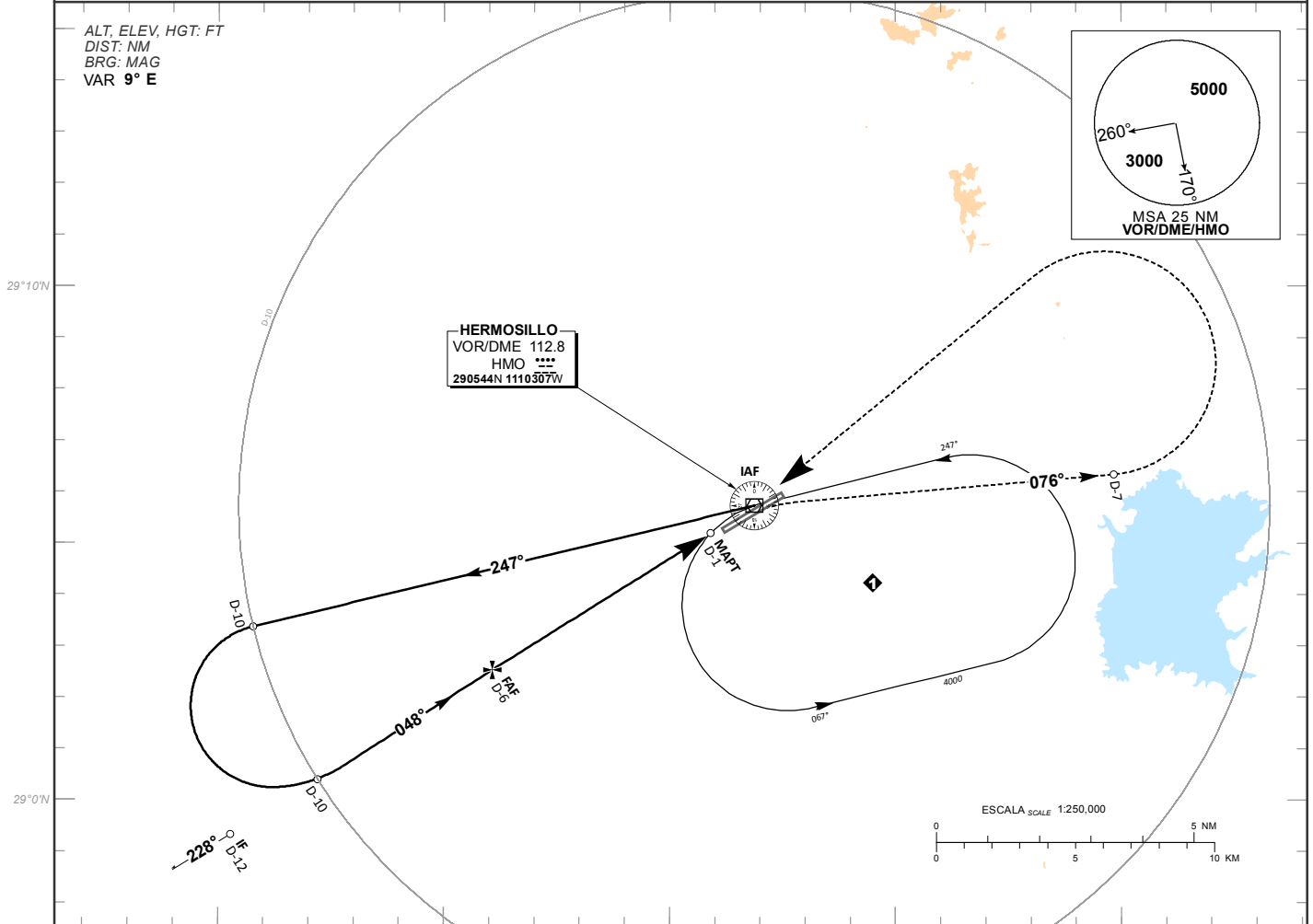
INSTRUMENT APPROACH CHART (IAC)

VOR Z RWY 05

MMHO TWR <b>118.7</b>	APP <b>121.4</b>	ATIS <b>127.7</b>	EMERG <b>121.5</b>	MMGM TWR <b>118.6</b>	AD ELEV <b>627 FT</b>
--------------------------	---------------------	----------------------	-----------------------	--------------------------	-----------------------

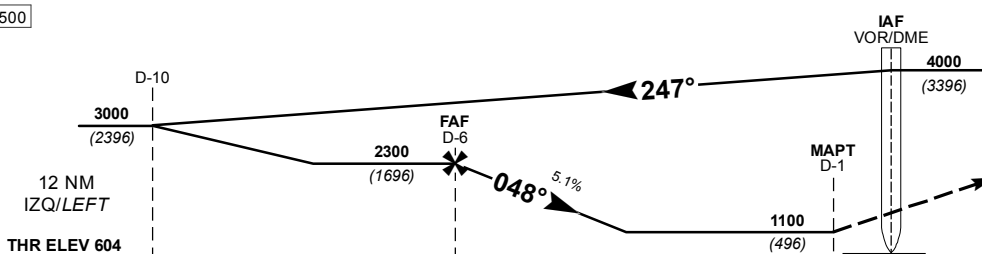
**APCH FRUSTRADA: VIRE A LA DERECHA Y PROSIGA EN RADIAL 076° HASTA D-7, EFECTUE VIRAJE DE GOTA A LA IZQUIERDA DENTRO DE 10 NM HACIA EL VOR/DME/HMO HASTA LA ALTITUD MINIMA DE ESPERA.**  
**MISSED APCH: TURN RIGHT AND PROCEED HMO R-076° TO D-7, TURN LEFT WITHIN 10 NM TO VOR/DME/HMO AT THE MINIMUM HOLDING ALTITUDE.**

RMK: - DME REQUERIDO DME REQUIRED



TA 18500

ALTURAS REFERIDAS AL THR RWY 05  
HEIGHTS RELATED TO THR RWY 05



GRADIENTE DE DESCENSO RATE OF DESCENT	FAP-MAPT 5								5.1% (2.9°)				ALTITUD MINIMA SEGUN DISTANCIA MINIMUM ALTITUDE ACCORDING TO DISTANCE	NM	6	5	4	3	
	GS (KTS)	80	100	120	140	160	180	200	FT	2300	1990	1680		1370	FT	2300	1990	1680	1370
	MIN : SEC	3:45	3:00	2:30	2:09	1:52	1:40	1:30		(1696)	(1386)	(1076)		(766)		(1696)	(1386)	(1076)	(766)

CAMBIOS: SIMBOLOGIA

CAT	DIRECTO STRAIGHT-IN OCA (OCH) / MDA (MDH) <b>1100 (496)</b>	CIRCULANDO CIRCLING OCA (OCH) / MDA (MDH)
A	<b>1 (1600 M)</b>	<b>1160 (533) - 1 (1600 M)</b>
B	<b>1 1/4 (2000 M)</b>	<b>1540 (913) - 2 3/4 (4400 M)</b>
C	<b>1 1/2 (2400 M)</b>	<b>1780 (1153) - 3 (4800 M)</b>