

PLANO DE ESTACIONAMIENTO Y ATRAQUE DE AERONAVES /
AIRCRAFT PARKING/DOCKING CHART

ELEV AD 8 M

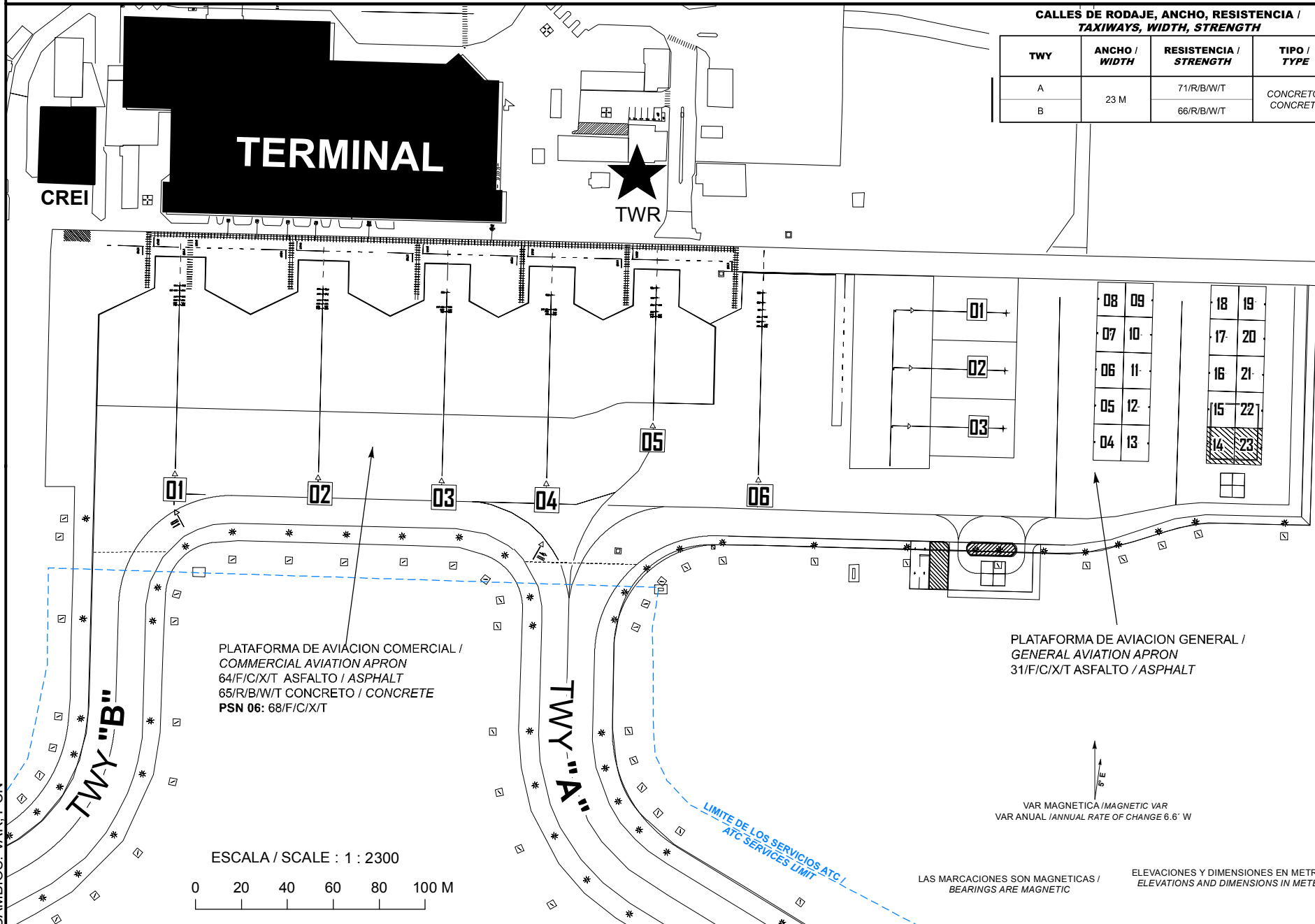
IXTAPA-ZIHUATANEJO

AEROPUERTO INTL
INTL AIRPORT

TWR	118.3
APP	121.0

**CALLES DE RODAJE, ANCHO, RESISTENCIA /
TAXIWAYS, WIDTH, STRENGTH**

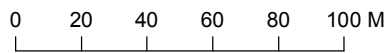
TWY	ANCHO / WIDTH	RESISTENCIA / STRENGTH	TIPO / TYPE
A	23 M	71/R/B/W/T	CONCRETO/ CONCRETE
B		66/R/B/W/T	



PLATAFORMA DE AVIACION COMERCIAL /
COMMERCIAL AVIATION APRON
64/F/C/X/T ASFALTO / ASPHALT
65/R/B/W/T CONCRETO / CONCRETE
PSN 06: 68/F/C/X/T

PLATAFORMA DE AVIACION GENERAL /
GENERAL AVIATION APRON
31/F/C/X/T ASFALTO / ASPHALT

ESCALA / SCALE : 1 : 2300



VAR MAGNETICA / MAGNETIC VAR
VAR ANUAL / ANNUAL RATE OF CHANGE 6.6" W

LAS MARCACIONES SON MAGNETICAS /
BEARINGS ARE MAGNETIC

ELEVACIONES Y DIMENSIONES EN METROS /
ELEVATIONS AND DIMENSIONS IN METERS

CAMBIOS: VAR: PCN

**COORDENADAS INS, DE PUESTOS DE ESTACIONAMIENTO
DE AERONAVES AVIACION COMERCIAL /
COORDINATES INS, FOR AIRCRAFT STANDS, COMMERCIAL
AVIATION APRON**

**COORDENADAS INS, DE PUESTOS DE ESTACIONAMIENTO
DE AERONAVES AVIACION GENERAL /
COORDINATES INS, FOR AIRCRAFT STANDS, GENERAL
AVIATION APRON**

PSN	LAT (N)	LONG (W)	ELEV (M)	GUND (M)
1	17° 36' 20.27"	101° 27' 51.73"	4.5	-12
	17° 36' 20.21"	101° 27' 51.73"	4.5	-12
	17° 36' 20.12"	101° 27' 51.74"	4.5	-12
	17° 36' 20.07"	101° 27' 51.74"	4.5	-12
	17° 36' 20.01"	101° 27' 51.74"	4.5	-12
2	17° 36' 20.22"	101° 27' 49.71"	4.5	-12
	17° 36' 20.15"	101° 27' 49.72"	4.5	-12
	17° 36' 20.07"	101° 27' 49.72"	4.5	-12
	17° 36' 20.02"	101° 27' 49.72"	4.5	-12
	17° 36' 19.96"	101° 27' 49.72"	4.5	-12
3	17° 36' 20.17"	101° 27' 47.97"	4.5	-12
	17° 36' 19.98"	101° 27' 47.97"	4.5	-12
	17° 36' 19.91"	101° 27' 47.98"	4.5	-12
4	17° 36' 20.14"	101° 27' 46.50"	4.5	-12
	17° 36' 19.94"	101° 27' 46.50"	4.5	-12
	17° 36' 19.88"	101° 27' 46.50"	5	-12
5	17° 36' 20.23"	101° 27' 45.02"	4.5	-12
	17° 36' 20.10"	101° 27' 45.02"	4.5	-12
	17° 36' 20.00"	101° 27' 45.02"	4.5	-12
	17° 36' 19.91"	101° 27' 45.02"	5	-12
	17° 36' 19.84"	101° 27' 45.03"	5	-12
6	17° 36' 20.16"	101° 27' 43.52"	4.5	-12
	17° 36' 20.03"	101° 27' 43.52"	4.5	-12
	17° 36' 19.93"	101° 27' 43.52"	4.5	-12
	17° 36' 19.84"	101° 27' 43.52"	4.5	-12
	17° 36' 19.77"	101° 27' 43.53"	4.5	-12
	17° 36' 19.71"	101° 27' 43.53"	4.5	-12

PSN	LAT (N)	LONG (W)	ELEV (M)	GUND(M)
1	17° 36' 19.89"	101° 27' 40.09"	4	-12
2	17° 36' 19.11"	101° 27' 40.11"	4.5	-12
3	17° 36' 18.33"	101° 27' 40.13"	4	-12
4	17° 36' 18.14"	101° 27' 38.66"	4	-12
5	17° 36' 18.63"	101° 27' 38.65"	4	-12
6	17° 36' 19.11"	101° 27' 38.63"	4	-12
7	17° 36' 19.60"	101° 27' 38.61"	4	-12
8	17° 36' 20.07"	101° 27' 38.60"	4	-12
9	17° 36' 20.06"	101° 27' 38.21"	4	-12
10	17° 36' 19.59"	101° 27' 38.22"	4	-12
11	17° 36' 19.10"	101° 27' 38.24"	4	-12
12	17° 36' 18.61"	101° 27' 38.25"	4	-12
13	17° 36' 18.13"	101° 27' 38.27"	4	-12
14	17° 36' 18.09"	101° 27' 37.07"	3.5	-12
15	17° 36' 18.58"	101° 27' 37.05"	4	-12
16	17° 36' 19.07"	101° 27' 37.04"	4	-12
17	17° 36' 19.56"	101° 27' 37.02"	4	-12
18	17° 36' 20.04"	101° 27' 37.01"	4	-12
19	17° 36' 20.03"	101° 27' 36.62"	4	-12
20	17° 36' 19.55"	101° 27' 36.63"	4	-12
21	17° 36' 19.06"	101° 27' 36.65"	4	-12
22	17° 36' 18.57"	101° 27' 36.66"	4	-12
23	17° 36' 18.08"	101° 27' 36.68"	4	-12