

CARTA DE APROXIMACION
POR INSTRUMENTOS (IAC)

LEON / GUANAJUATO INTL (MMLO)

INSTRUMENT APPROACH CHART (IAC)

VOR Z RWY 13

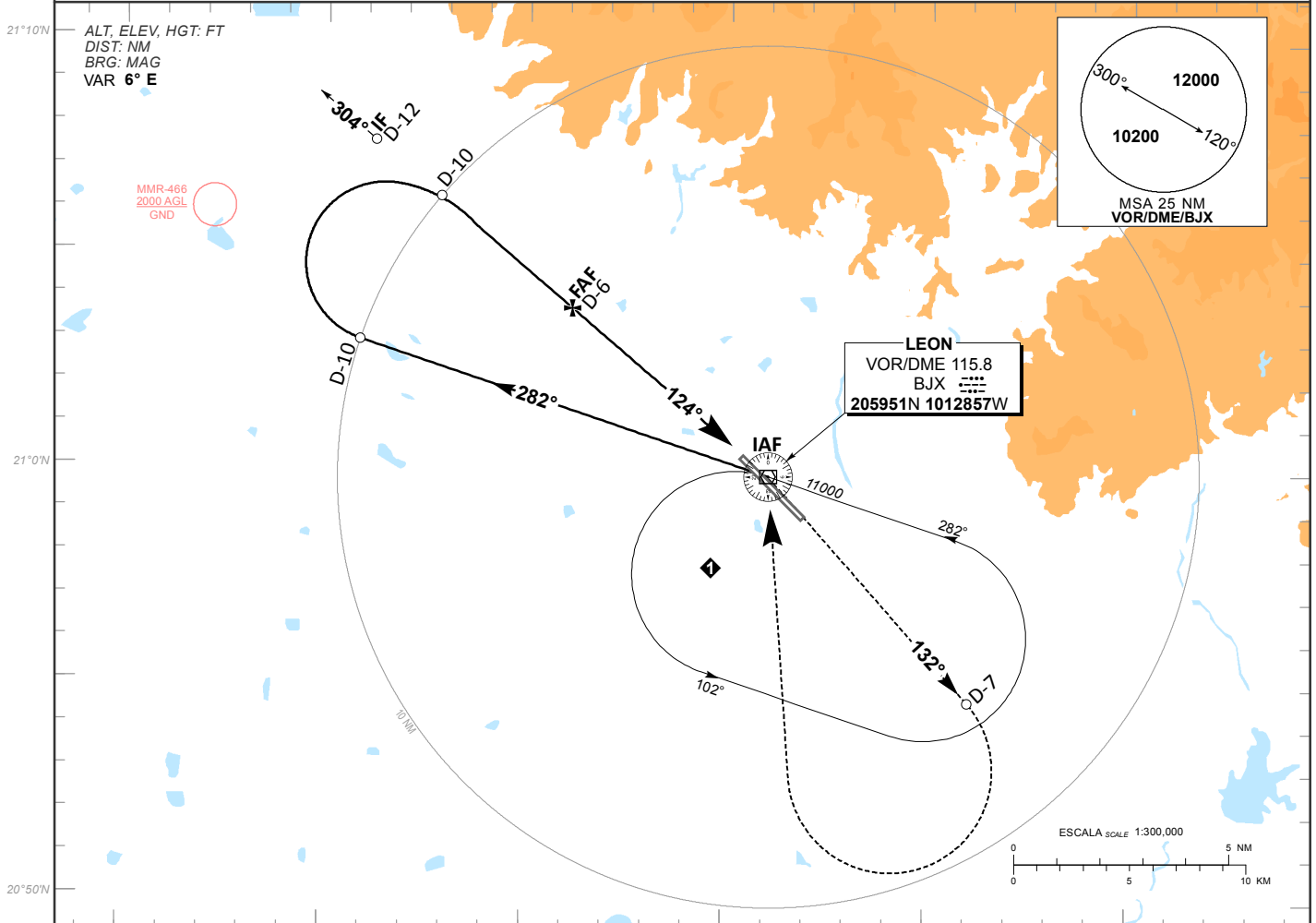
| | | | | |
|----------------------|----------------------|----------------------|---------------------------|------------------------|
| TWR 118.35 | APP 129.40 | ATIS 128.4 | MMAS APP 119.05 | AD ELEV 5956 FT |
|----------------------|----------------------|----------------------|---------------------------|------------------------|

APCH FRUSTRADA: ASCIENDA EN RADIAL 132° HASTA D-7, EFECTUE VIRAJE DE GOTA A LA DERECHA DENTRO DE 10 NM HACIA EL VOR/DME/BJX HASTA LA ALTITUD MINIMA DE ESPERA.

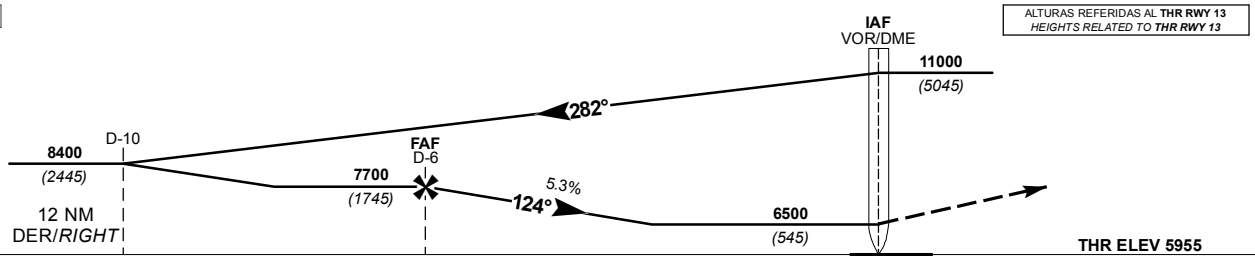
MISSED APCH: CLIMB VIA BJJ VOR R-132° TO D-7, THEN TURN RIGHT WITHIN 10 NM TO VOR/DME/BJX AT MINIMUM HOLDING ALTITUDE.

RMK: - DME REQUERIDO DME REQUIRED

- NO UTILIZAR RADIOALTIMETRO COMO REFERENCIA PARA DETERMINAR ALTURA SOBRE EL AEROPUERTO POR CONDICIONES OROGRAFICAS DO NOT USE RADIOALTIMETER AS REFERENCE TO DETERMINE ALTITUDE OVER AIRPORT DUE TO OROGRAPHIC CONDITIONS



TA 18500



| GRADIENTE DE DESCENSO RATE OF DESCENT | FAF-MAPT 6 | | | | | | | | ALTITUD MINIMA SEGUN DISTANCIA MINIMUM ALTITUDE ACCORDING TO DISTANCE | ALTURAS REFERIDAS AL THR RWY 13 HEIGHTS RELATED TO THR RWY 13 | | | | |
|---------------------------------------|-------------|------|------|------|------|------|------|-----|---|---|-------------|-------------|-------------|------------|
| | 5.3% (3.0°) | | | | | | | | | NM | 6 | 5 | 4 | 3 |
| | GS (KTS) | 80 | 100 | 120 | 140 | 160 | 180 | 200 | | FT | 7700 (1745) | 7380 (1425) | 7060 (1105) | 6740 (785) |
| FT / MIN | 427 | 534 | 641 | 748 | 855 | 962 | 1069 | | | | | | | |
| MIN : SEC | 4:30 | 3:36 | 3:00 | 2:34 | 2:15 | 2:00 | 1:48 | | | | | | | |

CAMBIOS: FREQ APP: MMR-466

| CAT | DIRECTO STRAIGHT-IN | CIRCULANDO CIRCLING |
|-----|---|------------------------------------|
| | OCA (OCH) / MDA (MDH) 6500 (545) | OCA (OCH) / MDA (MDH) |
| A | 1 (1600 M) | 6560 (604) - 1 (1600 M) |
| B | 1 1/2 (2400 M) | 6720 (764) - 2 1/4 (3600 M) |
| C | 1 3/4 (2800 M) | 6880 (924) - 3 (4800 M) |