

CARTA DE APROXIMACION  
POR INSTRUMENTOS (IAC)

MERIDA / AEROPUERTO INTERNACIONAL (MMMD)

INSTRUMENT APPROACH CHART (IAC)

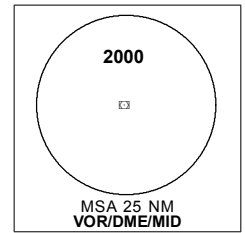
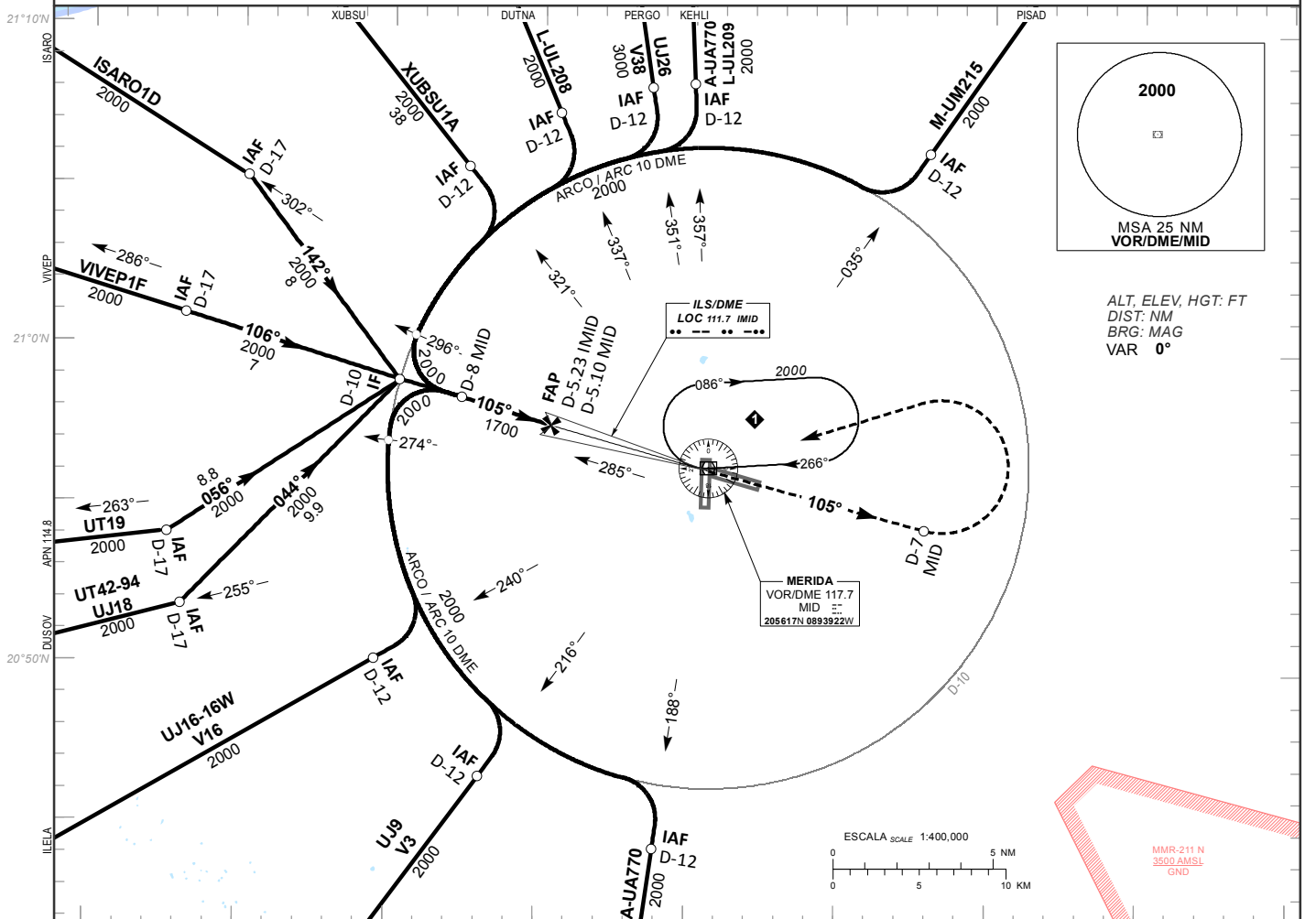
ILS Y OR LOC Y RWY 10

TWR <b>118.3</b>	APP <b>121.2</b>	ATIS <b>127.9</b>	FIS <b>126.9</b>	EMERG <b>121.5</b>	<b>AD ELEV 36 FT</b>
---------------------	---------------------	----------------------	---------------------	-----------------------	----------------------

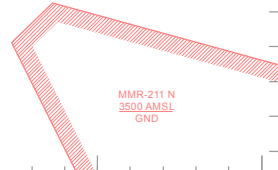
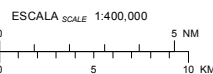
**APCH FRUSTRADA:** ASCIENDA EN RADIAL 105° HASTA D-7, EFECTUE VIRAJE DE GOTA A LA IZQUIERDA DENTRO DE 10 NM HACIA EL VOR/DME/MID HASTA LA ALTITUD MINIMA DE ESPERA.

**MISSED APCH:** CLIMB VIA MID VOR R-105° TO D-7, THEN TURN LEFT WITHIN 10 NM TO VOR/DME/MID AT THE MINIMUM HOLDING ALTITUDE.

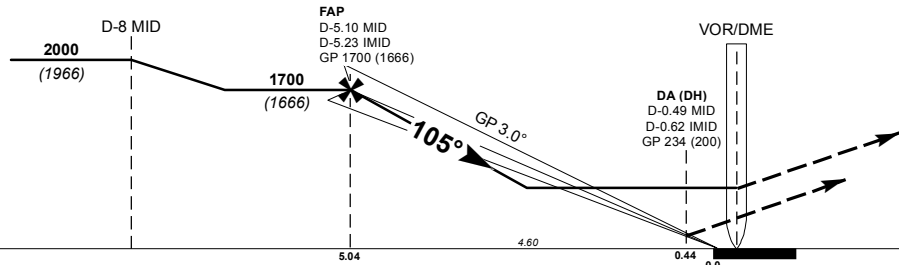
RMK: -VOR/DME REQUERIDO VOR/DME REQUIRED.



ALT, ELEV, HGT: FT  
DIST: NM  
BRG: MAG  
VAR 0°



ALTURAS REFERIDAS AL TDZ RWY 10  
HEIGHTS RELATED TO TDZ RWY 10



ILS RDH 58  
TDZ ELEV 34

GRADIENTE DE DESCENSO RATE OF DESCENT	FAP-THR 5.04		5.24% (3.0°)					ALTIMUD MINIMA SEGUN DISTANCIA DME/IMD MINIMUM ALTITUDE ACCORDING TO DISTANCE DME/IMD	NM	5.23	4	3	2	1		
	GS (KTS)	80	100	120	140	160	180			200	FT	1700	1309	991	673	355
	FT / MIN	425	531	637	743	849	955			1061		(1666)	(1275)	(957)	(639)	(321)
MIN : SEC	3:47	3:01	2:31	2:10	1:53	1:41	1:31									

CAMBIOS: AD ELEV.	CAT I COMPLETO / FULL	CAT I SIN ALS-F / ALS-F OUT	LOC COMPLETO / FULL	LOC SIN ALS-F / ALS-F OUT	CIRCULANDO CIRCLING CNL SECTOR "NE" DE INT DE RWYS OCA (OCH) / MDA (MDH) 660 (624)
	DA (DH) 234 (200)	DA (DH) 234 (200)	OCA (OCH) / MDA (MDH) 440 (404)	OCA (OCH) / MDA (MDH) 440 (404)	
	1/2 (800 M)	3/4 (1200 M)	1/2 (800 M)	1 (1600 M)	1 (1600 M)
				1 1/4 (2000 M)	1 3/4 (2800 M)
				2 (3200 M)	