

CARTA DE APROXIMACION  
POR INSTRUMENTOS (IAC)

MEXICO / BENITO JUAREZ INTL (MMMXX)

ILS X OR LOC X RWY 23L

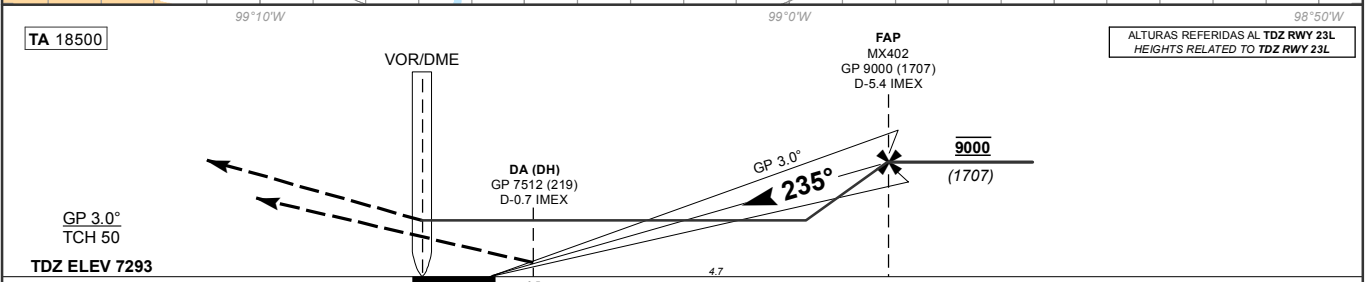
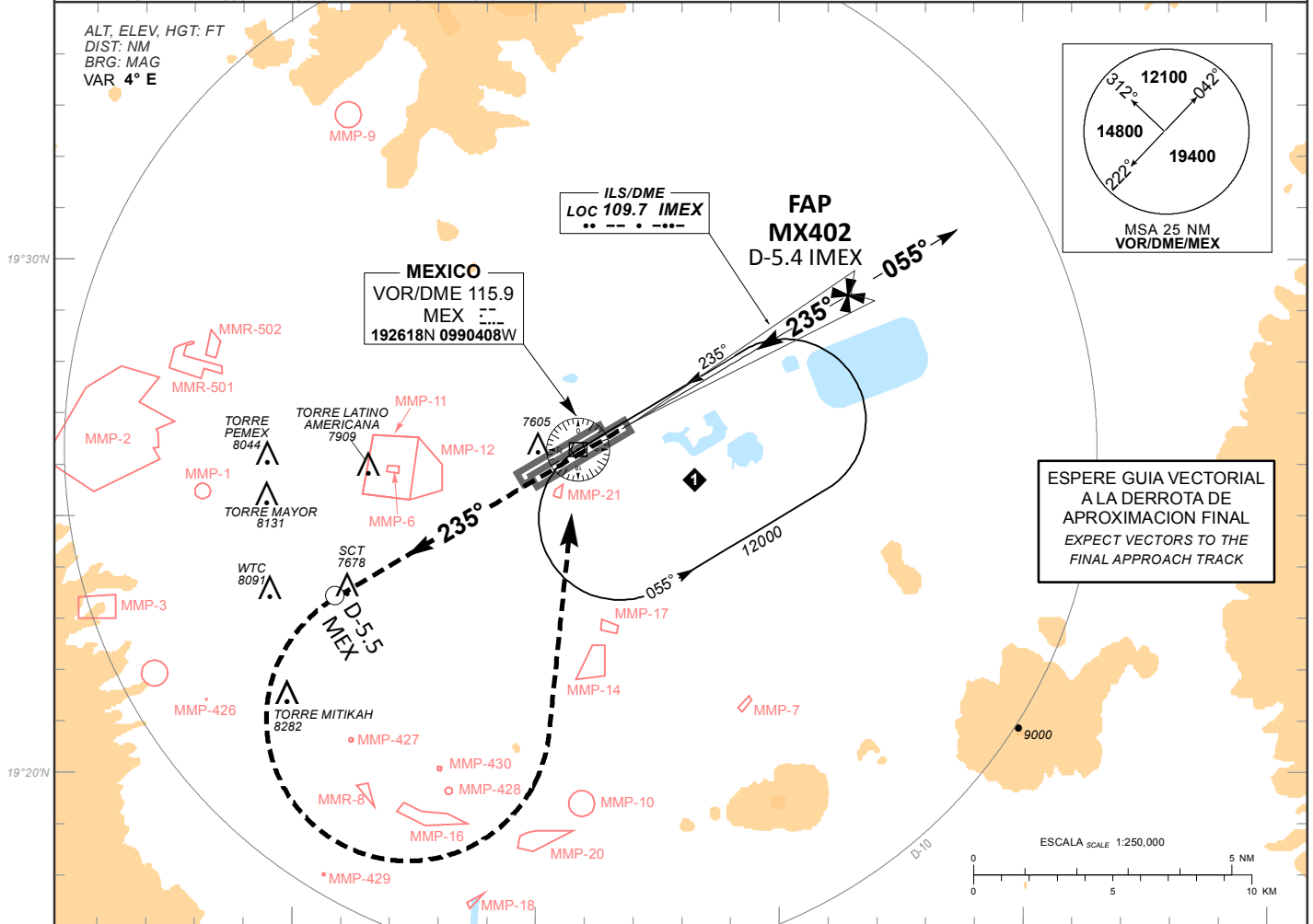
INSTRUMENT APPROACH CHART (IAC)

TWR 118.55, 118.7	APP 119.10, 119.25, 119.75, 120.50, 121.20, 121.40, 129.10, 129.65	D-ATIS 127.65	EMERG 121.5	AD ELEV 7293 FT
----------------------	--	------------------	----------------	-----------------

APCH FRUSTRADA: ASCIENDA EN RADIAL 235° HASTA D-5.5 DEL VOR/DME/MEX, EFECTUE VIRAJE DE GOT A LA IZQUIERDA HACIA EL VOR/DME/MEX Y MANTENGA EN PATRON DE ESPERA O DE ACUERDO A INSTRUCCIONES DEL ATC.

MISSED APCH: CLIMB VIA MEX VOR R-235° TO D-5.5 MEX, THEN TURN LEFT TO VOR/DME/MEX, JOIN HOLDING IN ACCORDANCE WITH ATC INSTRUCTIONS.

RMK: - VOR/DME REQUERIDO VOR/DME REQUIRED  
- VER ZONAS PROHIBIDAS, RESTRINGIDAS Y PELIGROSAS EN ENR 5.1 SEE PROHIBITED, RESTRICTED AND DANGEROUS AREAS IN ENR 5.1  
- DME DEL ILS UTILIZABLE UNICAMENTE PARA AERONAVES CON INSTRUMENTOS QUE PERMITAN OBTENER PRECISION EN MULTIPLIOS DE 0.20 NM ILS/DME USABLE FOR AIRCRAFT WITH ACCURATE INSTRUMENT READING WITHIN 0.20 NM



GRADIENTE DE DESCENSO RATE OF DESCENT	FAP-THR 5.2								5.2% (3.0°)				ALTITUD MINIMA SEGUN DISTANCIA MINIMUM ALTITUDE ACCORDING TO DISTANCE	NM	4	3	2	-	-				
	GS (KTS)	80	100	120	140	160	180	200	FT / MIN	425	531	637		743	850	956	1062	FT	8630 (1337)	8310 (1017)	7990 (697)	-	-
	MIN : SEC	3:53	3:06	2:35	2:13	1:56	1:43	1:33															

CAMBIOS: MMR-501, MMR-502.

CAT	CAT I COMPLETO / FULL	CAT I SIN SALS / SALS OUT	LOC COMPLETO / FULL	LOC SIN SALS / SALS OUT	CIRCULANDO CIRCLING
	DA (DH) 7512 (219)	DA (DH) 7512 (219)	OCA (OCH) / MDA (MDH) 7700 (407)	OCA (OCH) / MDA (MDH) 7700 (407)	OCA (OCH) / MDA (MDH)
			3/4 (1200 M)	1 (1600 M)	7960 (667) - 1 (1600 M)
	1/2 (800 M)	3/4 (1200 M)	7/8 (1400 M)	1 1/8 (1800 M)	8220 (927) - 2 3/4 (4400 M)
D					8380 (1087) - 3 (4800 M)