

CARTA DE APROXIMACION
POR INSTRUMENTOS (IAC)

MEXICO / BENITO JUAREZ INTL (MMMX)

VOR RWY 23L/R

INSTRUMENT APPROACH CHART (IAC)

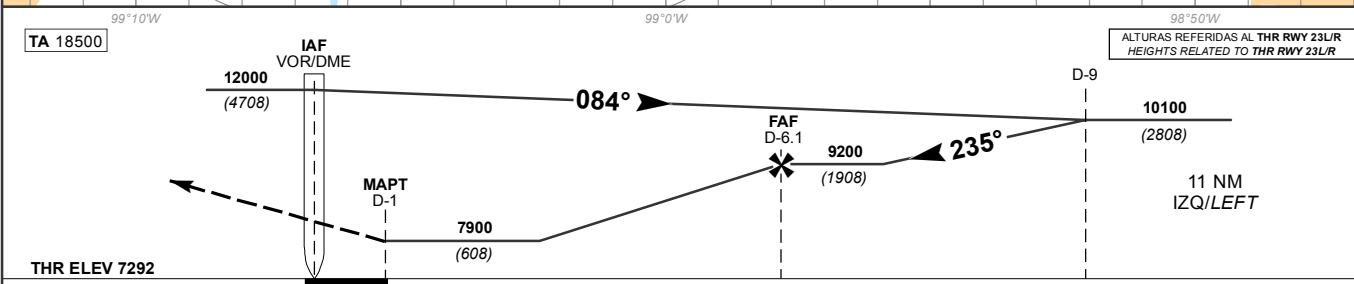
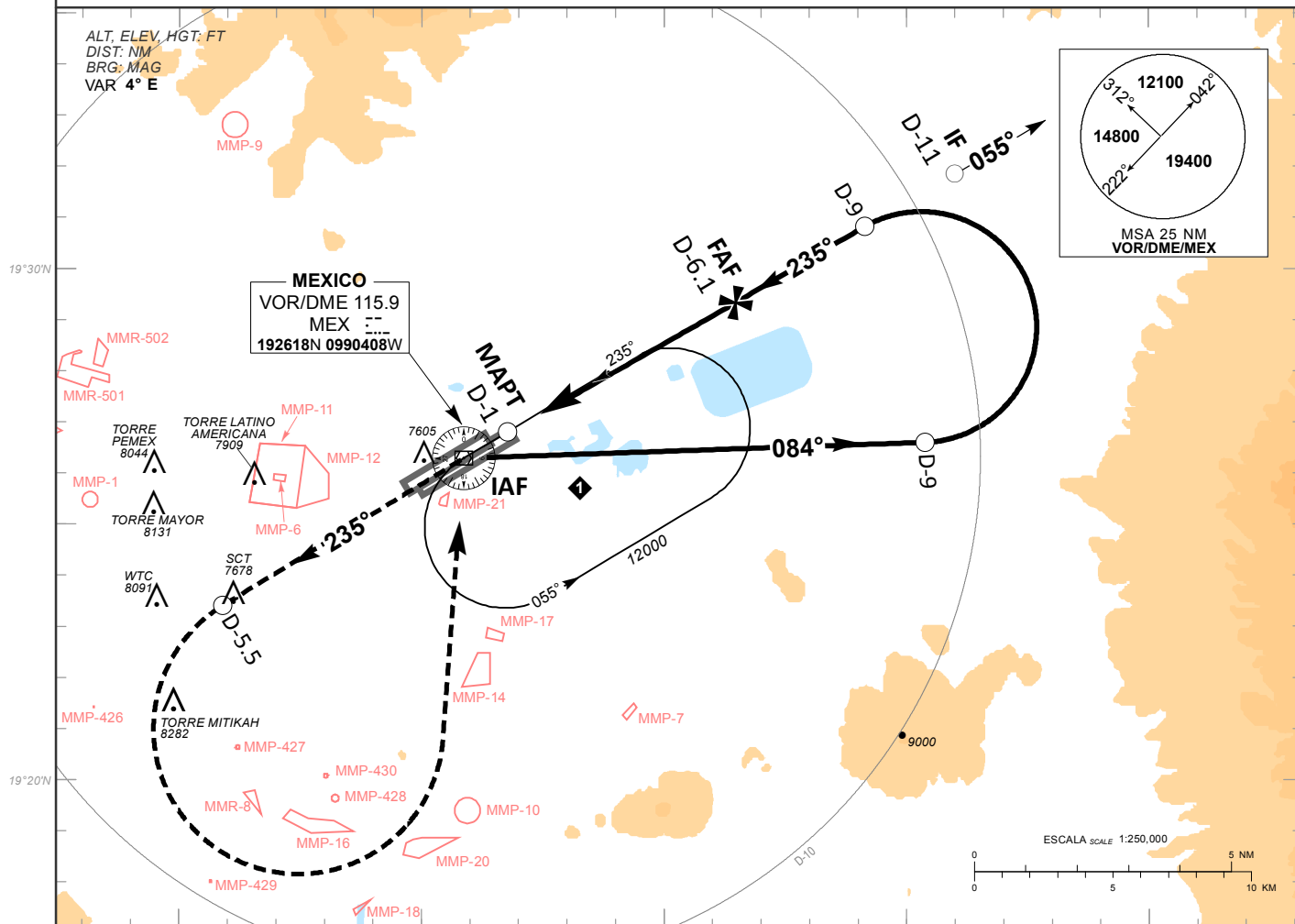
TWR 118.55, 118.7	APP 119.10, 119.25, 119.75, 120.50, 121.20, 121.40, 129.10, 129.65	D-ATIS 127.65	EMERG 121.5	AD ELEV 7293 FT
----------------------	--	------------------	----------------	-----------------

APCH FRUSTRADA: ASCIENDA EN RADIAL 235° HASTA D-5.5 DEL VOR/DME/MEX, EFECTUE VIRAJE DE GOT A LA IZQUIERDA HACIA EL VOR/DME/MEX Y MANTENGA EN PATRON DE ESPERA O DE ACUERDO A INSTRUCCIONES DEL ATC.

MISSED APCH: CLIMB VIA MEX VOR R-235° TO D-5.5 MEX, THEN TURN LEFT TO VOR/DME/MEX, JOIN HOLDING IN ACCORDANCE WITH ATC INSTRUCTIONS.

RMK: - DME REQUERIDO DME REQUIRED

- VER ZONAS PROHIBIDAS, RESTRINGIDAS Y PELIGROSAS EN ENR 5.1 SEE PROHIBITED, RESTRICTED AND DANGEROUS AREAS IN ENR 5.1



GRADIENTE DE DESCENSO RATE OF DESCENT	RWY 23L							RWY 23R							
	FAF-MAPT 5.1		5.9%					FAF-MAPT 5.1		5.4%					
GS (KTS)	80	100	120	140	160	180	200	GS (KTS)	80	100	120	140	160	180	200
FT / MIN	476	595	715	834	953	1072	1191	FT / MIN	439	549	659	768	878	988	1098
MIN : SEC	3:50	3:04	2:33	2:11	1:55	1:42	1:32	MIN : SEC	3:50	3:04	2:33	2:11	1:55	1:42	1:32

CAT	DIRECTO STRAIGHT-IN	CIRCULANDO CIRCLING
	A	OCA (OCH) / MDA (MDH) 7900 (608)
B	1 (1600 M)	7960 (667) - 1 (1600 M)
C	1 3/4 (2800 M)	8220 (927) - 2 3/4 (4400 M)
D		8380 (1087) - 3 (4800 M)

CAMBIOS: MMR-501, MMR-502.