

CARTA DE APROXIMACION
POR INSTRUMENTOS (IAC)

MEXICO / BENITO JUAREZ INTL (MMMX)

INSTRUMENT APPROACH CHART (IAC)

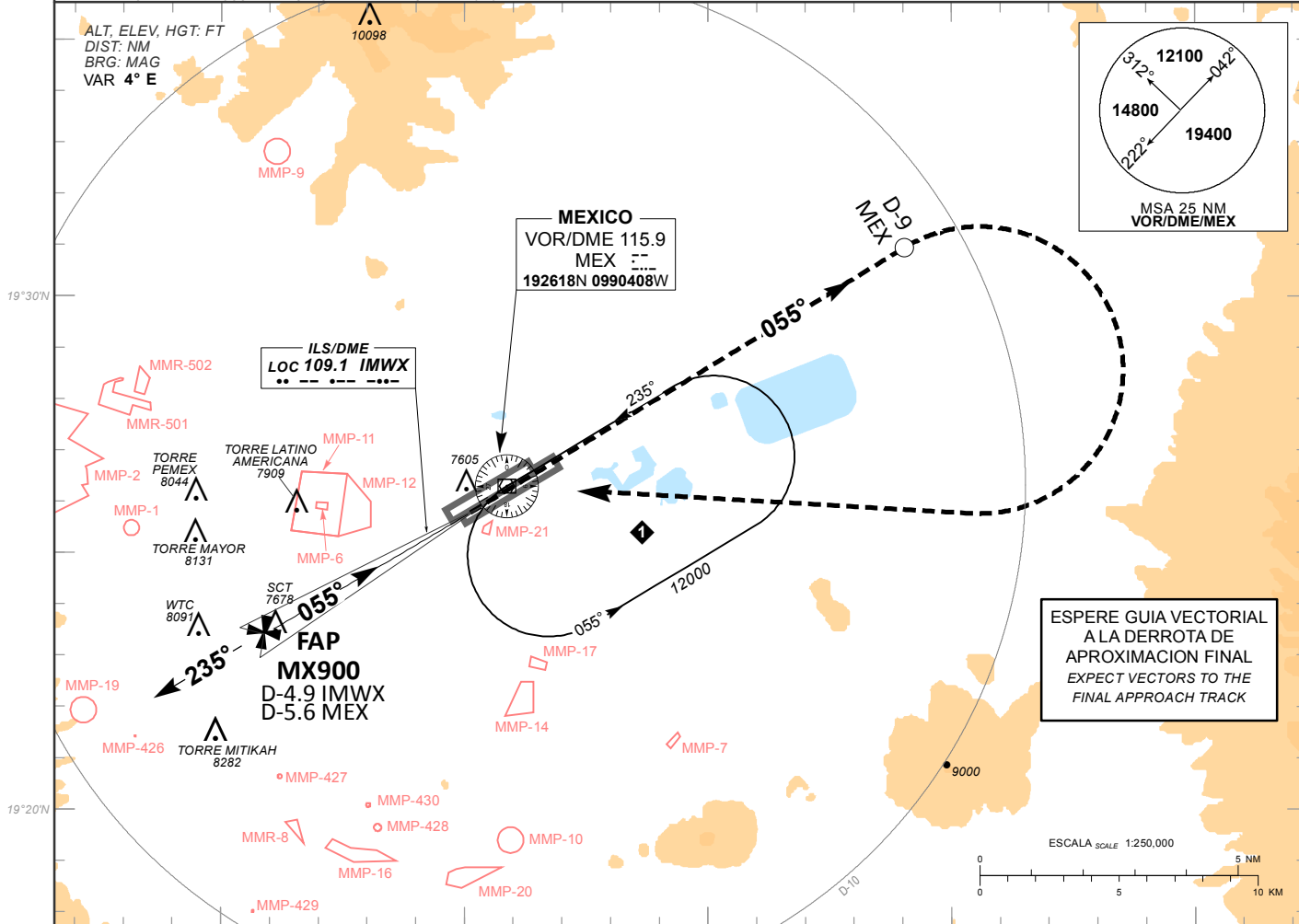
ILS X OR LOC X RWY 05R

TWR 118.55, 118.7	APP 119.10, 119.25, 119.75, 120.50, 121.20, 121.40, 129.10, 129.65	D-ATIS 127.65	EMERG 121.5	AD ELEV 7293 FT
----------------------	--	------------------	----------------	-----------------

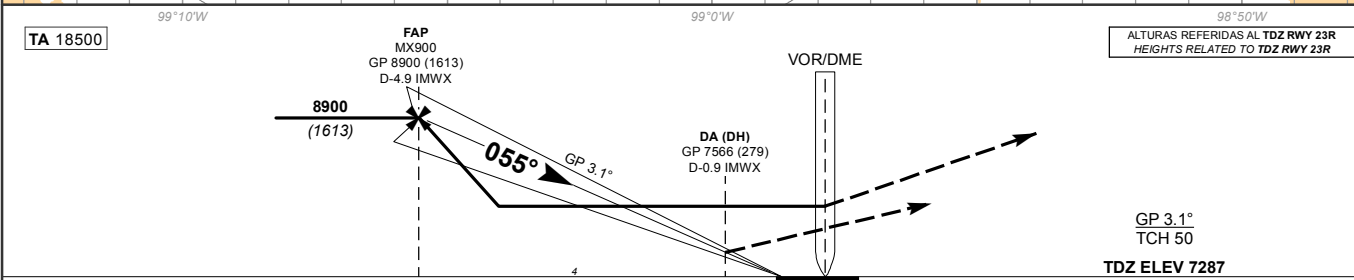
APCH FRUSTRADA: ASCIENDA EN RADIAL 055° HASTA D-9 DEL VOR/DME/MEX, EFECTUE VIRAJE DE GOTTA A LA DERECHA HACIA EL VOR/DME/MEX Y MANTENGA EN PATRON DE ESPERA O DE ACUERDO A INSTRUCCIONES DEL ATC.

MISSED APCH: CLIMB VIA MEX VOR R-055° TO D-9 MEX. THEN TURN RIGHT TO VOR/DME/MEX, JOIN HOLDING IN ACCORDANCE WITH ATC INSTRUCTIONS.

RMK: - VOR/DME REQUERIDO VOR/DME REQUIRED
- VER ZONAS PROHIBIDAS, RESTRINGIDAS Y PELIGROSAS EN ENR 5.1 SEE PROHIBITED, RESTRICTED AND DANGEROUS AREAS IN ENR 5.1
- DME DEL ILS UTILIZABLE UNICAMENTE PARA AERONAVES CON INSTRUMENTOS QUE PERMITAN OBTENER PRECISION EN MULTIPLIOS DE 0.20 NM ILS/DME USABLE FOR AIRCRAFT WITH ACCURATE INSTRUMENT READING WITHIN 0.20 NM



ESPERE GUIA VECTORIAL
A LA DERROTA DE
APROXIMACION FINAL
EXPECT VECTORS TO THE
FINAL APPROACH TRACK



GRADIENTE DE DESCENSO RATE OF DESCENT	FAP-THR 4.7		5.4% (3.1°)					ALTITUD MINIMA SEGUN DISTANCIA MINIMUM ALTITUDE ACCORDING TO DISTANCE	NM	4	3	2	-	-
	GS (KTS)	80	100	120	140	160	180		200	FT	8670 (1383)	8340 (1053)	8010 (723)	-

CAMBIOS: MMR-501, MMR-502.

CAT	CAT I COMPLETO / FULL	CAT I SIN SALS / SALS OUT	LOC COMPLETO / FULL	LOC SIN SALS / SALS OUT	CIRCULANDO CIRCLING
	DA (DH) 7566 (279)	DA (DH) 7566 (279)	OCA (OCH) / MDA (MDH) 7900 (613)	OCA (OCH) / MDA (MDH) 7900 (613)	OCA (OCH) / MDA (MDH)
A			3/4 (1200 M)	1 (1600 M)	7960 (667) - 1 (1600 M)
B					
C	1/2 (800 M)	3/4 (1200 M)			8220 (927) - 2 3/4 (4400 M)
D			1 3/8 (2200 M)	1 3/4 (2800 M)	8380 (1087) - 3 (4800 M)