

PLANO DE ESTACIONAMIENTO Y ATRAQUE DE AERONAVES/
AIRCRAFT PARKING/DOCKING CHART

ELEV AD 2223 M

TWR	118.55, 118.7	RMP	122.80
PDC	122.1	D-ATIS	127.650
SMC	121.85, 121.0	FIS	126.875
		EMERG	121.5
HELICOPTEROS MEX		118.15	

MEXICO
AEROPUERTO INTL/
INTL AIRPORT
BENITO JUAREZ

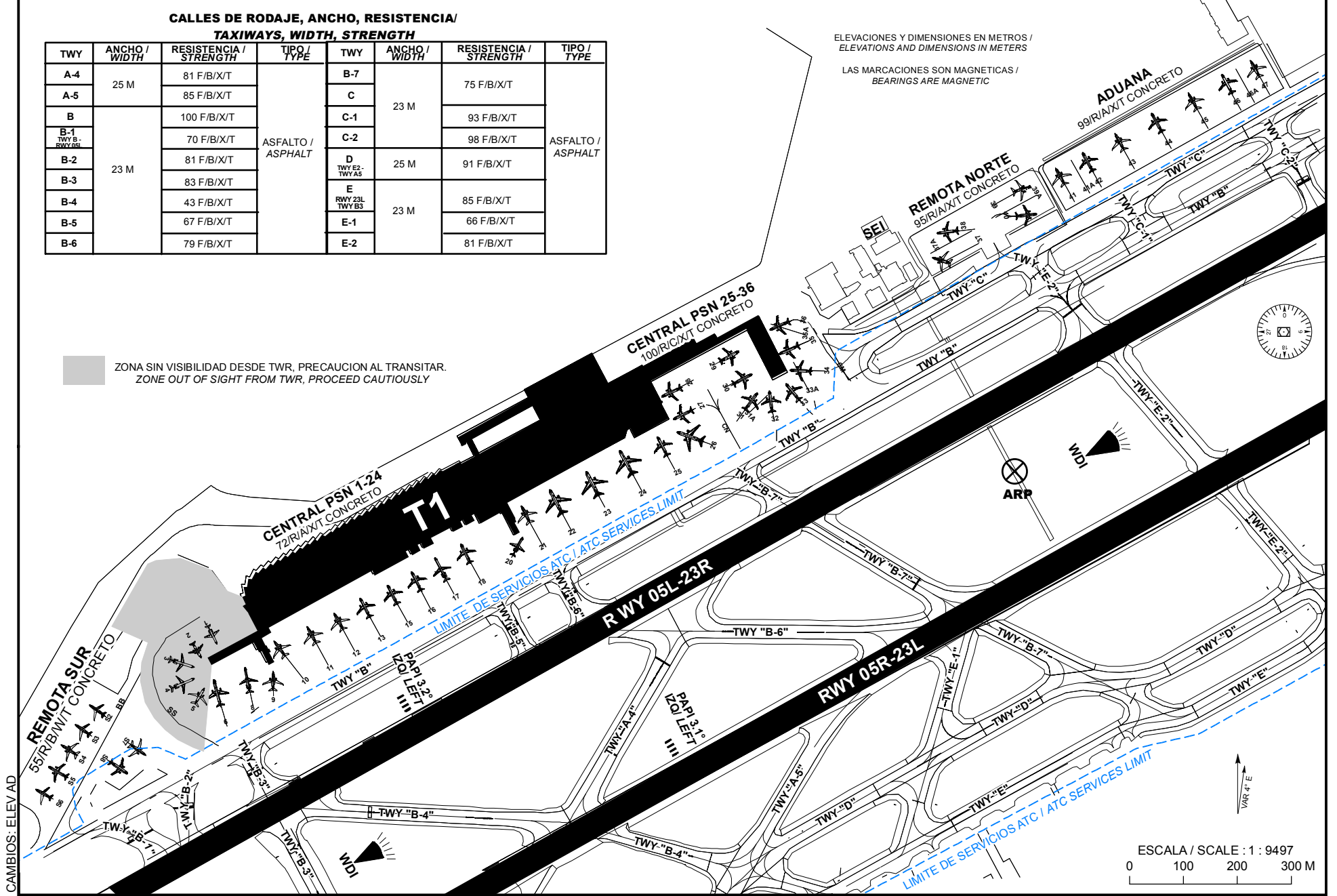
**CALLES DE RODAJE, ANCHO, RESISTENCIA/
TAXIWAYS, WIDTH, STRENGTH**

TWY	ANCHO / WIDTH	RESISTENCIA / STRENGTH	TIPO / TYPE	TWY	ANCHO / WIDTH	RESISTENCIA / STRENGTH	TIPO / TYPE
A-4	25 M	81 F/B/X/T	ASFALTO / ASPHALT	B-7	23 M	75 F/B/X/T	ASFALTO / ASPHALT
A-5		85 F/B/X/T		C		93 F/B/X/T	
B	100 F/B/X/T	C-1		98 F/B/X/T			
B-1 TWY B- RWY 05L	70 F/B/X/T	D TWY E2- TWY A5		25 M	91 F/B/X/T		
B-2	81 F/B/X/T	E RWY 23L TWY B3		23 M	85 F/B/X/T		
B-3	83 F/B/X/T	E-1			66 F/B/X/T		
B-4	43 F/B/X/T	E-2			81 F/B/X/T		
B-5	67 F/B/X/T						
B-6	79 F/B/X/T						

ELEVACIONES Y DIMENSIONES EN METROS /
ELEVATIONS AND DIMENSIONS IN METERS

LAS MARCACIONES SON MAGNETICAS /
BEARINGS ARE MAGNETIC

ZONA SIN VISIBILIDAD DESDE TWR, PRECAUCION AL TRANSITAR.
ZONE OUT OF SIGHT FROM TWR, PROCEED CAUTIOUSLY



CAMBIOS: ELEV AD

PLATAFORMA SUR		
PUNTOS	LATITUD	LONGITUD
S-2	19° 25' 54.3273" N	99° 05' 20.1177" W
S-3	19° 25' 53.1646" N	99° 05' 20.9320" W
S-4	19° 25' 51.9344" N	99° 05' 21.7058" W
S-5	19° 25' 50.6876" N	99° 05' 22.5027" W
S-6	19° 25' 49.3562" N	99° 05' 23.2290" W
S-7	19° 25' 51.5081" N	99° 05' 16.5750" W
S-8	19° 25' 50.4441" N	99° 05' 17.7328" W

PSN PLATAFORMA REMOTA NORTE		
PUNTOS	LATITUD	LONGITUD
P-37	19° 26' 21.5753" N	99° 04' 29.4207" W
P-37-A	19° 26' 21.8788" N	99° 04' 29.8177" W
P-38	19° 26' 23.0429" N	99° 04' 29.3979" W
P-39	19° 26' 25.8246" N	99° 04' 23.7890" W
P-39-A	19° 26' 25.4323" N	99° 04' 23.4910" W
P-40	19° 26' 24.3146" N	99° 04' 23.54528" W

PSN PLATAFORMA ADUANA		
PUNTOS	LATITUD	LONGITUD
P-41	19° 26' 27.0006" N	99° 04' 22.3462" W
P-41-A	19° 26' 27.5033" N	99° 04' 21.4441" W
P-42	19° 26' 27.9043" N	99° 04' 20.7397" W
P-43	19° 26' 29.0961" N	99° 04' 18.8095" W
P-44	19° 26' 30.3353" N	99° 04' 16.6145" W
P-45	19° 26' 31.5681" N	99° 04' 14.4301" W
P-46	19° 26' 32.6786" N	99° 04' 12.4573" W
P-46-A	19° 26' 33.0561" N	99° 04' 11.5858" W
P-47	19° 26' 33.5717" N	99° 04' 10.6737" W

PSN EDIFICIO DE PASAJEROS TERMINAL 1		
PUNTOS	LATITUD	LONGITUD
P-1	19° 25' 58.2401" N	99° 05' 12.6200" W
P-2	19° 25' 57.4445" N	99° 05' 13.6166" W
P-3	19° 25' 56.9063" N	99° 05' 14.2016" W
P-4	19° 25' 56.1332" N	99° 05' 14.1140" W
P-5	19° 25' 55.6452" N	99° 05' 13.3691" W
P-6	19° 25' 55.9721" N	99° 05' 12.6055" W
P-8	19° 25' 56.7428" N	99° 05' 10.7309" W
P-9	19° 25' 56.5195" N	99° 05' 09.0002" W
P-10	19° 25' 58.2956" N	99° 05' 08.9785" W
P-11	19° 25' 59.1696" N	99° 05' 06.9918" W
P-12	19° 26' 00.0021" N	99° 05' 05.3822" W
P-13	19° 26' 00.8293" N	99° 05' 03.8067" W
P-15	19° 26' 01.6861" N	99° 05' 02.2010" W
P-16	19° 26' 02.4997" N	99° 05' 00.7533" W
P-17	19° 26' 03.3864" N	99° 04' 59.3743" W
P-18	19° 26' 04.2125" N	99° 04' 57.8209" W
P-20	19° 26' 04.7323" N	99° 04' 54.1125" W
P-21	19° 26' 06.5414" N	99° 04' 54.2364" W
P-22	19° 26' 07.4338" N	99° 04' 52.4621" W
P-23	19° 26' 08.6395" N	99° 04' 50.3657" W
P-24	19° 26' 09.8286" N	99° 04' 48.2783" W
P-25	19° 26' 10.7634" N	99° 04' 46.0910" W
P-26	19° 26' 11.1120" N	99° 04' 44.8679" W
P-27	19° 26' 11.5207" N	99° 04' 43.8173" W
P-28	19° 26' 13.0911" N	99° 04' 45.8924" W
P-29	19° 26' 15.8035" N	99° 04' 41.4027" W
P-30	19° 26' 14.5346" N	99° 04' 40.6737" W
P-31	19° 26' 13.4310" N	99° 04' 40.1364" W
P-31-A	19° 26' 13.4120" N	99° 04' 39.4596" W
P-32	19° 26' 13.5551" N	99° 04' 39.3769" W
P-33	19° 26' 14.0500" N	99° 04' 38.3602" W
P-33-A	19° 26' 15.3399" N	99° 04' 37.9473" W
P-34	19° 26' 14.9035" N	99° 04' 38.0471" W
P-35	19° 26' 15.8434" N	99° 04' 38.7716" W
P-35-A	19° 26' 17.5181" N	99° 04' 39.3776" W
P-36	19° 26' 17.1769" N	99° 04' 39.3936" W