

CARTA DE APROXIMACION  
POR INSTRUMENTOS (IAC)

MONTERREY / AEROPUERTO DEL NORTE INTL (MMAN)

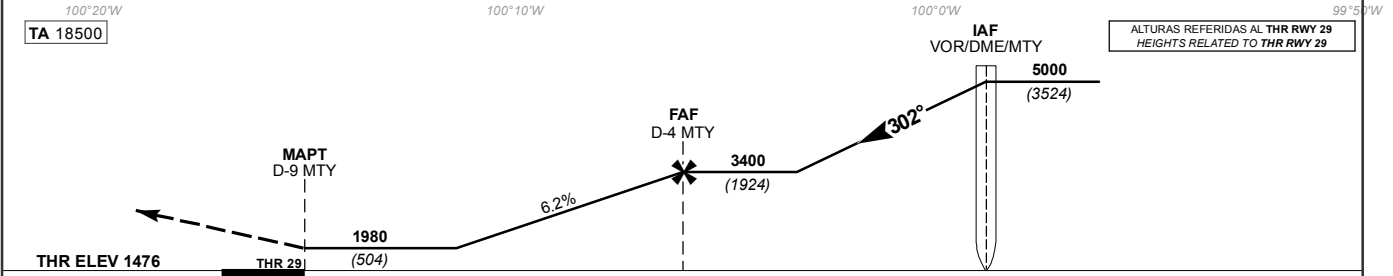
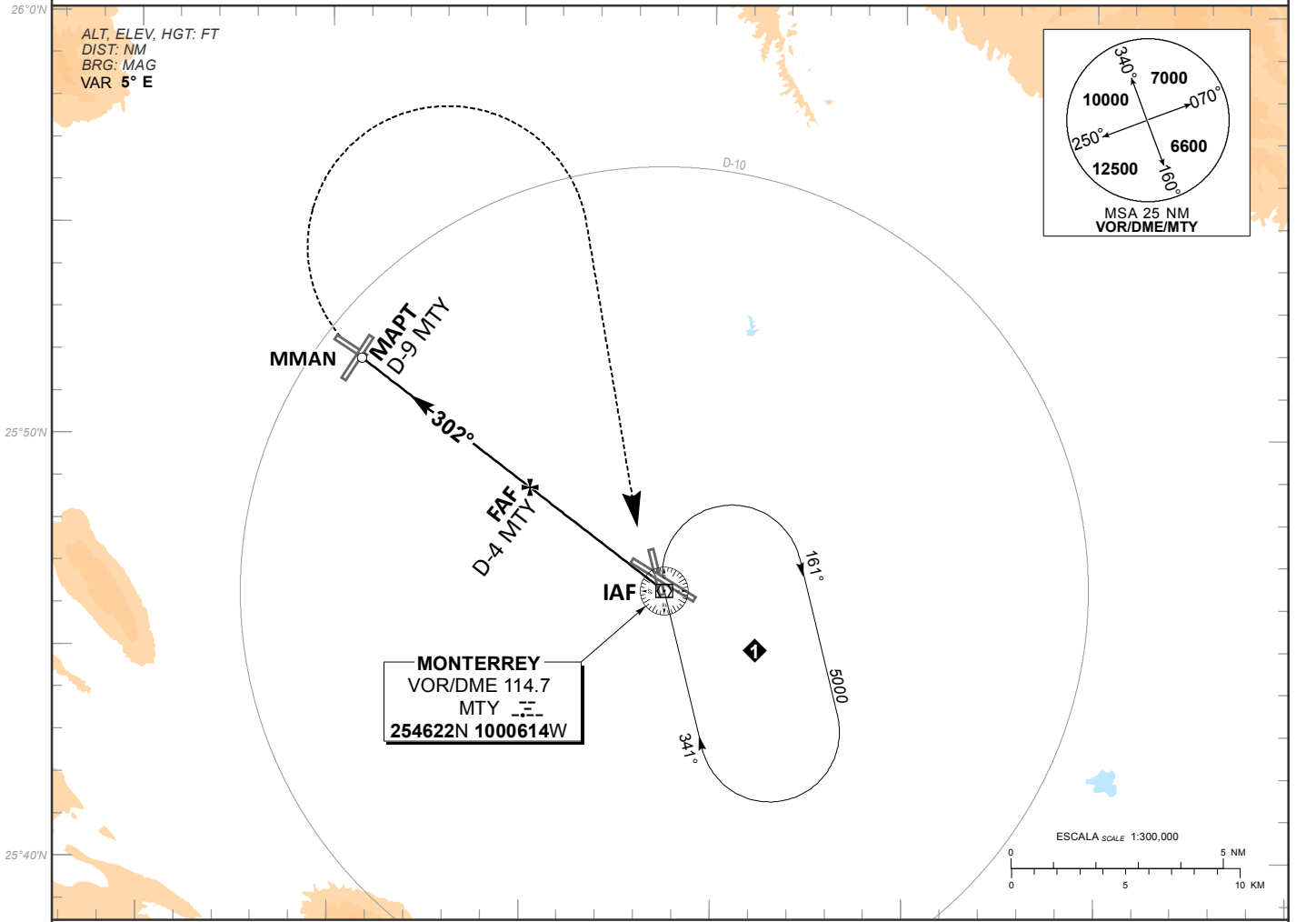
INSTRUMENT APPROACH CHART (IAC)

VOR RWY 29

MMAN TWR <b>118.6</b>	MMMY TWR <b>118.1</b>	MMMY DEP <b>119.75</b>	MMMY APP <b>119.75</b>	MMMY ARR <b>120.4</b>	ATIS <b>127.55</b>	<b>AD ELEV 1476 FT</b>
--------------------------	--------------------------	---------------------------	---------------------------	--------------------------	-----------------------	------------------------

**APCH FRUSTRADA:** VIRE A LA DERECHA E INTERCEPTE EN ASCENSO EL RADIAL 302° HACIA EL VOR/DME/MTY HASTA LA ALTITUD MINIMA DE ESPERA.  
**MISSED APCH:** CLIMBING RIGHT TURN TO INTERCEPT MTY VOR R-302° INBOUND AND RETURN TO VOR/DME/MTY TO THE MINIMUM HOLDING ALTITUDE.

RMK: - DME REQUERIDO DME REQUIRED



GRADIENTE DE DESCENSO RATE OF DESCENT	FAF-THR 5								6.2%								ALTITUD MINIMA SEGUN DISTANCIA MINIMUM ALTITUDE ACCORDING TO DISTANCE	NM	5	4	3	2					
	GS (KTS)	80	100	120	140	160	180	200	FT / MIN	500	625	750	875	999	1124	1249							FT	3360 (1884)	2990 (1514)	2610 (1134)	2240 (764)
	MIN : SEC	3:45	3:00	2:30	2:09	1:52	1:40	1:30																			

CAMBIOS: SIMBOLOGIA. CAT	DIRECTO STRAIGHT-IN		CIRCULANDO CIRCLING	
	OCA (OCH) / MDA (MDH) <b>1980 (504)</b>		OCA (OCH) / MDA (MDH) <b>2040 (564)</b>	
	1 (1600 M)		1 (1600 M)	
	1 1/2 (2400 M)		1 1/2 (2400 M)	
	_____		_____	