

CARTA DE APROXIMACION
POR INSTRUMENTOS (IAC)

PUEBLA / HERMANOS SERDAN INTL (MMPB)

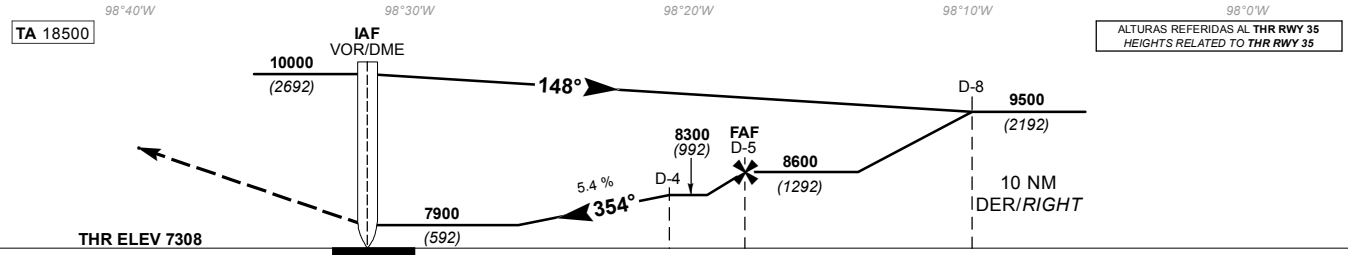
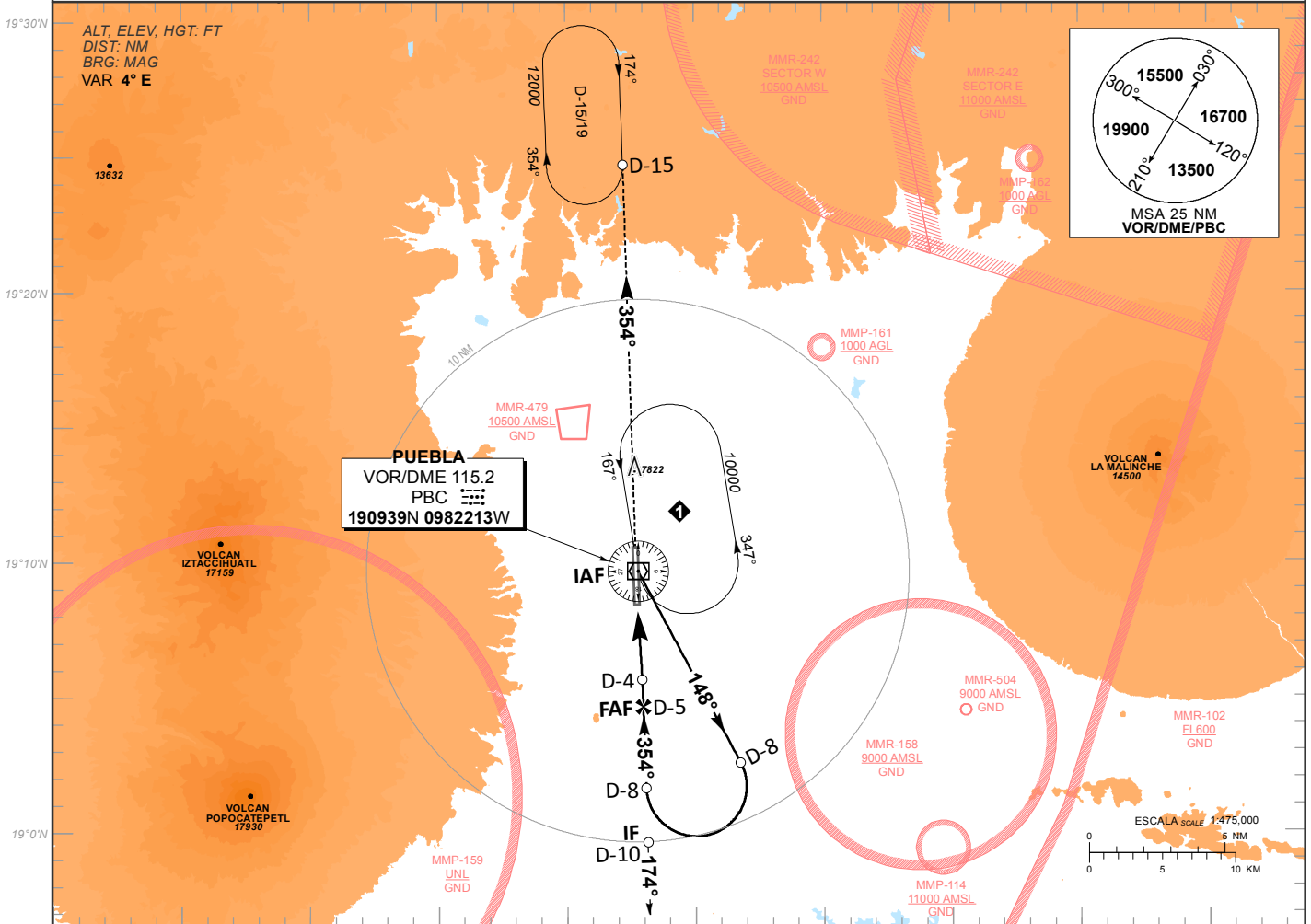
INSTRUMENT APPROACH CHART (IAC)

VOR Z RWY 35

TWR 118.20	APP 127.0	MMM APP 119.25	AD ELEV 7361 FT
----------------------	---------------------	--------------------------	------------------------

APCH FRUSTRADA: ASCIENDA EN RADIAL 354° HASTA ALCANZAR MINIMO 10000 FT EN D-15 Y CONTINUE EN ASCENSO SOBRE PATRON DE ESPERA HASTA 12000 FT O DE ACUERDO A INSTRUCCIONES DEL ATC
MISSED APCH: CLIMB OUTBOUND ON PBC VOR R-354° TO MINIMUM OF 10000 FT AT D-15 CONTINUE TO CLIMB IN HOLDING PATTERN TO 12000 FT OR IN ACCORDANCE TO ATC INSTRUCTIONS.

RMK: - DME REQUERIDO DME REQUIRED
 - NO UTILIZAR PATRONES DE ESPERA SIMULTANEAMENTE A LA MISMA ALTITUD DO NOT USE HOLDING PATTERNS AT THE SAME ALTITUDE



DISTANCIA MAXIMA DE ALEJAMIENTO 15 NM DESDE EL MAPT MAXIMUM DISTANCE TO TURN 15 NM FROM MAPT		GS (KTS)	80	100	120	140	160	180	200
		MIN : SEC	11:15	9:00	7:30	6:26	5:37	5:00	4:30
GRADIENTE DE DESCENSO RATE OF DESCENT	D-4-MAPT 4	5.4% (3.0°)							
	GS (KTS)	80	100	120	140	160	180	200	ALTIMUD MINIMA SEGUN DISTANCIA MINIMUM ALTITUDE ACCORDING TO DISTANCE
	FT / MIN	4:38	5:47	6:57	7:66	8:76	9:85	10:94	NM
	MIN : SEC	3:00	2:24	2:00	1:43	1:30	1:20	1:12	FT
									8300 (992)
									7970 (662)
									7640 (332)

CAMBIOS: MMR-504	CAT	DIRECTO STRAIGHT-IN OCA (OCH) / MDA (MDH) 7900 (592)	CIRCULANDO CIRCLING OCA (OCH) / MDA (MDH) 8120 (759)
	A	1 (1600 M)	1 (1600 M)
	B	1 1/2 (2400 M)	2 1/4 (3600 M)
	C	1 3/4 (2800 M)	2 1/2 (4000 M)
	D		