

CARTA DE APROXIMACION
POR INSTRUMENTOS (IAC)

QUERETARO / INTERCONTINENTAL DE QUERETARO INTL (MMQT)

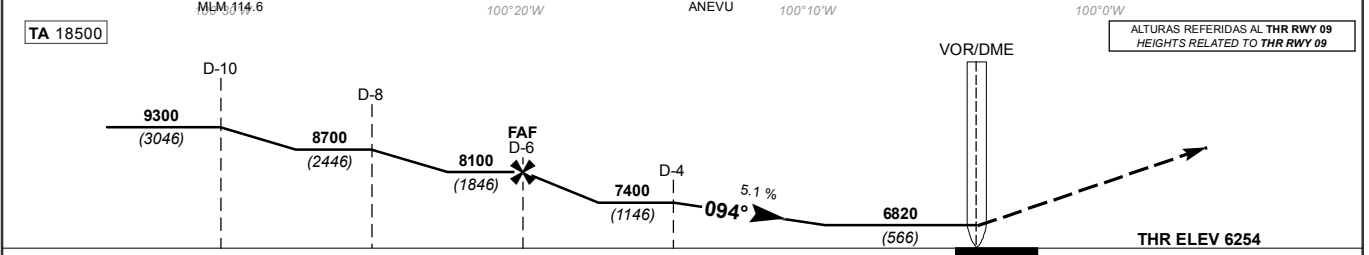
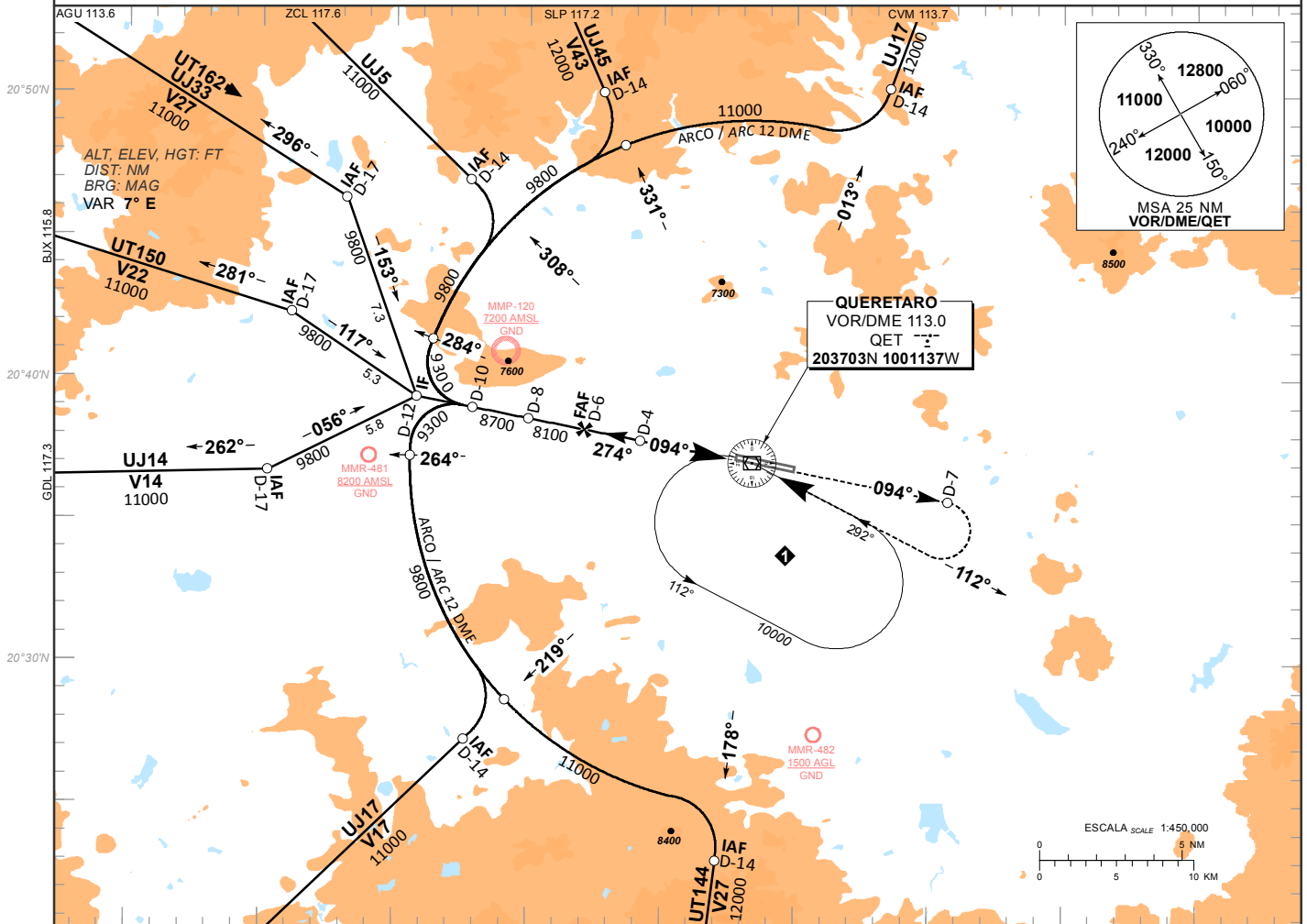
INSTRUMENT APPROACH CHART (IAC)

VOR Y RWY 09

| | | | |
|---------------|--------------|-----------------|-----------------|
| TWR 118.95 | APP 127.2 | ATIS 132.150 | AD ELEV 6296 FT |
|---------------|--------------|-----------------|-----------------|

APCH FRUSTRADA: ASCIENDA EN RADIAL 094° HASTA D-7, EFECTUE VIRAJE DE GOTA A LA DERECHA DENTRO DE 10 NM E INTERCEPTE EL RADIAL 112° HACIA EL VOR/DME/QET HASTA LA ALTITUD MINIMA DE ESPERA.
MISSED APCH: CLIMB OUTBOUND ON QET VOR R-094° TO D-7, TURN RIGHT WITHIN 10 NM AND INTERCEPT QET VOR R-112° INBOUND TO VOR/DME/QET TO THE MINIMUM HOLDING ALTITUDE.

RMK: - DME REQUERIDO DME REQUIRED



| | | | | | | | | | | | | | | | | |
|--|--------------|-----|-----|-----|------|-----|-----|-----------|---|------|--------|-------|-------|------|------|--|
| APROXIMACION FRUSTRADA: DISTANCIA MAXIMA DE ALEJAMIENTO 7 NM DESDE EL MAPT MISSED APPROACH: MAXIMUM DISTANCE TO TURN 7 NM FROM MAPT | | | | | | | | GS (KTS) | 80 | 100 | 120 | 140 | 160 | 180 | 200 | |
| | | | | | | | | MIN : SEC | 5:15 | 4:12 | 3:30 | 3:00 | 2:37 | 2:20 | 2:06 | |
| GRADIENTE DE DESCENSO RATE OF DESCENT | D-4 - MAPT 4 | | | | 5.1% | | | | ALTITUD MINIMA SEGUN DISTANCIA MINIMUM ALTITUDE ACCORDING TO DISTANCE | NM | 4 | 3 | 2 | - | - | |
| | GS (KTS) | 80 | 100 | 120 | 140 | 160 | 180 | 200 | | FT | 7400 | 7090 | 6780 | - | - | |
| | FT / MIN | 416 | 520 | 624 | 728 | 832 | 936 | 1040 | | | (1146) | (836) | (526) | - | - | |
| | | | | | | | | MIN : SEC | 3:00 | 2:24 | 2:00 | 1:43 | 1:30 | 1:20 | 1:12 | |

CAMBIOS: DISTANCIA; RUMBO

| | | |
|-----|----------------------------------|----------------------------------|
| CAT | DIRECTO STRAIGHT-IN | CIRCULANDO CIRCLING |
| | OCA (OCH) / MDA (MDH) 6820 (566) | OCA (OCH) / MDA (MDH) 7040 (744) |
| | 1 (1600 M) | 1 (1600 M) |
| | 1 5/8 (2600 M) | 2 1/4 (3600 M) |
| D | | 2 1/2 (4000 M) |