

CARTA DE APROXIMACION
POR INSTRUMENTOS (IAC)

QUERETARO / INTERCONTINENTAL DE QUERETARO INTL (MMQT)

INSTRUMENT APPROACH CHART (IAC)

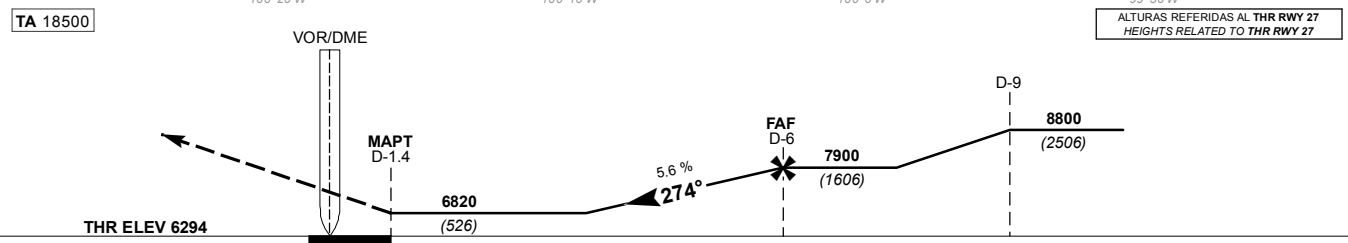
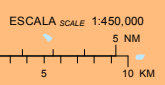
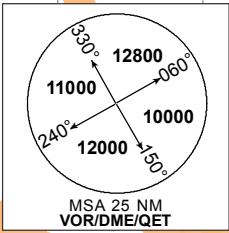
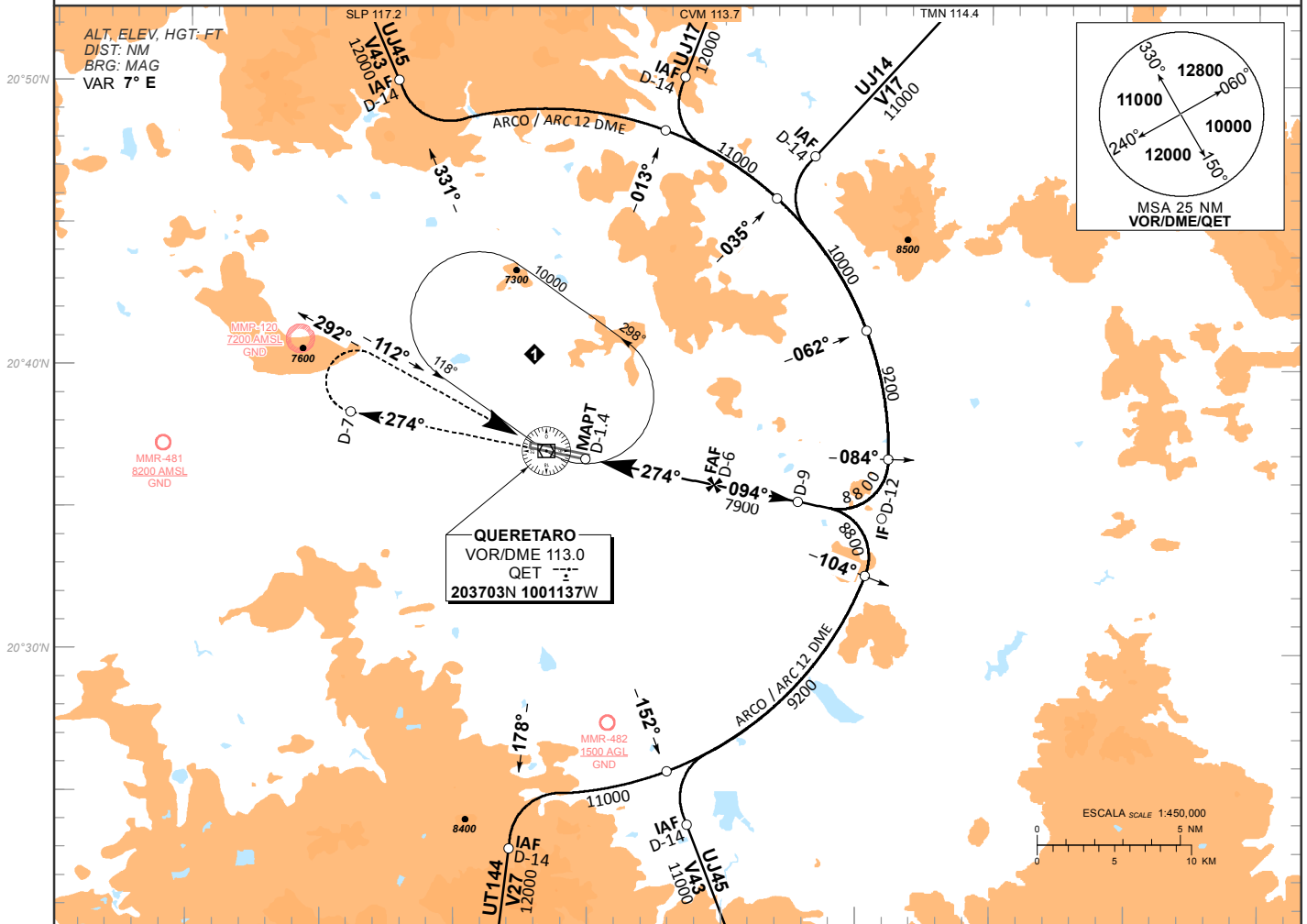
VOR Y RWY 27

TWR 118.95	APP 127.2	ATIS 132.150	AD ELEV 6296 FT
----------------------	---------------------	------------------------	------------------------

APCH FRUSTRADA: ASCIENDA EN RADIAL 274° HASTA D-7, EFECTUE VIRAJE DE GOTA A LA DERECHA DENTRO DE 10 NM E INTERCEPTE EL RADIAL 292° HACIA EL VOR/DME/QET HASTA LA ALTITUD MINIMA DE ESPERA.

MISSED APCH: CLIMB OUTBOUND ON QET VOR R-274° TO D-7, TURN RIGHT WITHIN 10 NM AND INTERCEPT QET VOR R-292° INBOUND TO VOR/DME/QET TO THE MINIMUM HOLDING ALTITUDE.

RMK: - DME REQUERIDO DME REQUIRED



APROXIMACION FRUSTRADA: DISTANCIA MAXIMA DE ALEJAMIENTO 8.4 NM DESDE EL MAPT MISSED APPROACH: MAXIMUM DISTANCE TO TURN 8.4 NM FROM MAPT								GS (KTS)	80	100	120	140	160	180	200
								MIN : SEC	6:18	5:02	4:12	3:36	3:09	2:48	2:31
GRADIENTE DE DESCENSO RATE OF DESCENT	FAF - MAPT 4.61							5.6%							
	GS (KTS)	80	100	120	140	160	180	200	ALTITUD MINIMA SEGUN DISTANCIA MINIMUM ALTITUDE ACCORDING TO DISTANCE	NM	6	5	4	3	
	FT / MIN	450	563	675	788	900	1013	1125		FT	7900 (1606)	7560 (1266)	7220 (926)	6890 (596)	

CAMBIOS: MMR-481, MMR-482

CAT	DIRECTO STRAIGHT-IN	CIRCULANDO CIRCLING
	OCA (OCH) / MDA (MDH) 6820 (526)	OCA (OCH) / MDA (MDH) 7040 (744)
A	1 (1600 M)	1 (1600 M)
B	1 1/2 (2400 M)	2 1/4 (3600 M)
C		2 1/2 (4000 M)