

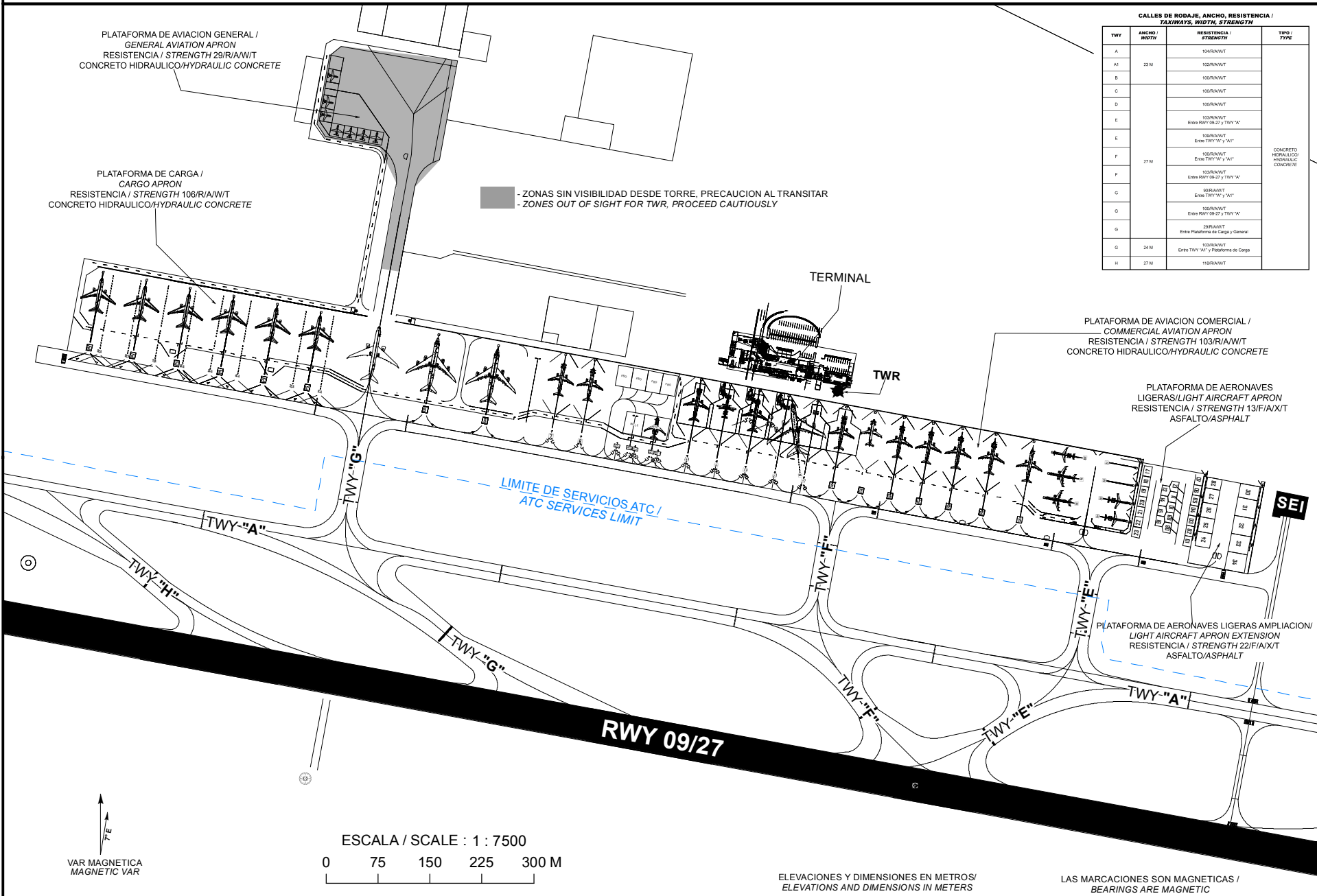
PLANO DE ESTACIONAMIENTO Y ATRAQUE DE AERONAVES/
AIRCRAFT PARKING/DOCKING CHART

TWR 118.95
APP 127.2
AFTN - MMQT

QUERETARO
AEROPUERTO INTL /
INTL AIRPORT

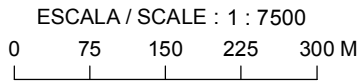
ELEV AD 1919 M

INTERCONTINENTAL DE QUERETARO



| CALLE DE RODAJE, ANCHO, RESISTENCIA / TAXIWAYS, WIDTH, STRENGTH | | | |
|---|---------------|--|--|
| TWY | ANCHO / WIDTH | RESISTENCIA / STRENGTH | TIPO / TYPE |
| A | | 104R/A/W/T | CONCRETO HIDRAULICO / HYDRAULIC CONCRETE |
| A1 | 23 M | 100R/A/W/T | |
| B | | 100R/A/W/T | |
| C | | 100R/A/W/T | |
| D | | 100R/A/W/T | |
| E | | 103R/A/W/T Entre RWY 09-27 y TWY 'A' | |
| E | | 100R/A/W/T Entre TWY 'A' y 'A1' | |
| F | 27 M | 100R/A/W/T Entre TWY 'A' y 'A1' | |
| F | | 103R/A/W/T Entre RWY 09-27 y TWY 'A' | |
| G | | 95R/A/W/T Entre TWY 'A' y 'A1' | |
| G | | 100R/A/W/T Entre RWY 09-27 y TWY 'A' | |
| G | | 28R/A/W/T Entre Plataforma de Carga y General | |
| G | 24 M | 103R/A/W/T Entre TWY 'A1' y Plataforma de Carga | |
| H | 27 M | 115R/A/W/T | |

CAMBIOS: DESIGNADOR DE CARTA



ELEVACIONES Y DIMENSIONES EN METROS / ELEVATIONS AND DIMENSIONS IN METERS

LAS MARCACIONES SON MAGNETICAS / BEARINGS ARE MAGNETIC

**COORDENADAS INS, DE PUESTOS DE ESTACIONAMIENTO DE AERONAVES AVIACION COMERCIAL /
COORDINATES INS, FOR AIRCRAFT STANDS, COMMERCIAL AVIATION APRON**

| PSN | LAT (N) | LONG (W) |
|-----|-----------------|------------------|
| 1E | 20° 37' 18.755" | 100° 11' 11.636" |
| 2E | 20° 37' 18.623" | 100° 11' 10.288" |
| 3E | 20° 37' 18.433" | 100° 11' 08.904" |
| 4E | 20° 37' 18.463" | 100° 11' 07.486" |
| 5E | 20° 37' 18.210" | 100° 11' 06.123" |
| 6E | 20° 37' 17.599" | 100° 11' 04.639" |
| 7E | 20° 37' 17.597" | 100° 11' 02.798" |
| 8E | 20° 37' 15.239" | 100° 11' 02.309" |
| 9E | 20° 37' 16.303" | 100° 11' 02.097" |
| 10E | 20° 37' 17.224" | 100° 11' 01.912" |
| 11E | 20° 37' 16.531" | 100° 10' 58.160" |
| 12E | 20° 37' 15.747" | 100° 10' 58.316" |
| 13E | 20° 37' 14.967" | 100° 10' 58.474" |
| 14E | 20° 37' 14.182" | 100° 10' 58.632" |

| PSN | LAT (N) | LONG (W) |
|-----|-----------------|------------------|
| 1 | 20° 37' 19.216" | 100° 11' 12.962" |
| 2 | 20° 37' 19.460" | 100° 11' 14.315" |
| 2A | 20° 37' 19.488" | 100° 11' 14.063" |
| 3 | 20° 37' 19.709" | 100° 11' 15.686" |
| 4 | 20° 37' 19.965" | 100° 11' 17.056" |
| 5 | 20° 37' 20.232" | 100° 11' 18.415" |
| 6 | 20° 37' 21.186" | 100° 11' 23.400" |
| 7 | 20° 37' 20.607" | 100° 11' 24.926" |
| 8 | 20° 37' 22.045" | 100° 11' 27.882" |
| 9 | 20° 37' 22.557" | 100° 11' 30.670" |

**COORDENADAS INS, DE PUESTOS DE ESTACIONAMIENTO PLATAFORMA DE CARGA /
COORDINATES INS, FOR AIRCRAFT STANDS, CARGO APRON**

| PSN | LAT (N) | LONG (W) |
|-----|-----------------|------------------|
| 1CA | 20° 37' 23.297" | 100° 11' 35.604" |
| 1C | 20° 37' 23.387" | 100° 11' 36.216" |
| 2CA | 20° 37' 23.524" | 100° 11' 36.861" |
| 2C | 20° 37' 23.964" | 100° 11' 38.223" |
| 3C | 20° 37' 24.373" | 100° 11' 40.248" |
| 4CA | 20° 37' 24.240" | 100° 11' 40.762" |
| 4C | 20° 37' 24.240" | 100° 11' 40.762" |
| 5CA | 20° 37' 24.476" | 100° 11' 42.042" |
| 5C | 20° 37' 24.93" | 100° 11' 44.36" |
| 6CA | 20° 37' 24.57" | 100° 11' 43.36" |
| 7CA | 20° 37' 24.81" | 100° 11' 43.64" |
| 8CA | 20° 37' 25.05" | 100° 11' 43.93" |
| 9CA | 20° 37' 25.30" | 100° 11' 46.39" |