

CARTA DE APROXIMACION
POR INSTRUMENTOS (IAC)

SAN JOSE DEL CABO / LOS CABOS INTL (MMSD)
VOR Y RWY 16

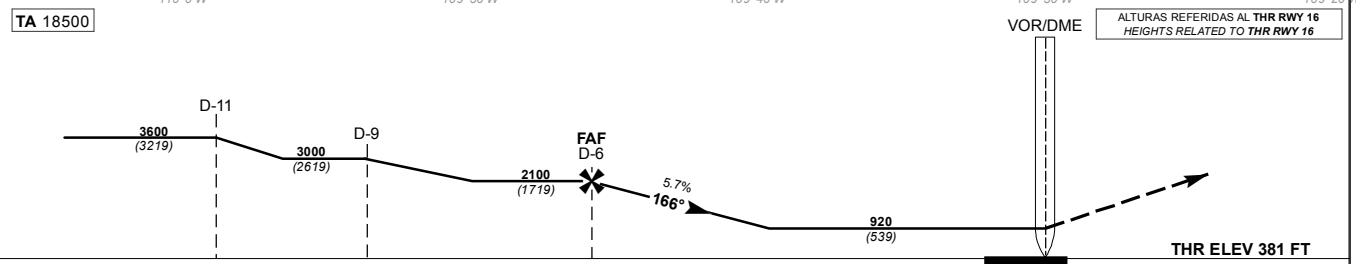
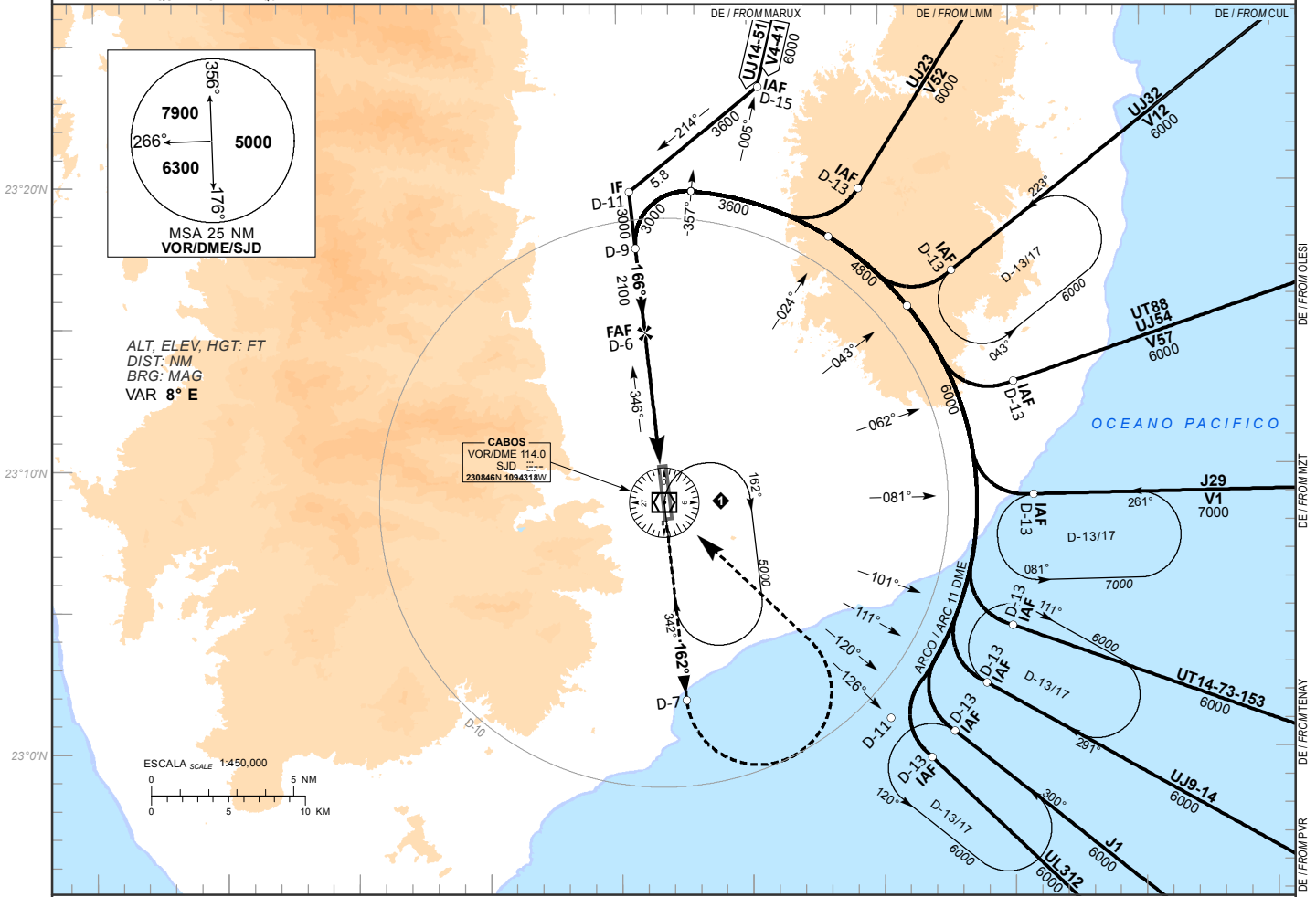
INSTRUMENT APPROACH CHART (IAC)

| | | | |
|------------------------------------|------------------------------|----------------------|-----------------------|
| TWR 118.90, 118.45 (SMC) | APP 120.90, 128.95 | ATIS 127.6 | AD ELEV 381 FT |
|------------------------------------|------------------------------|----------------------|-----------------------|

APCH FRUSTRADA: ASCIENDA EN RADIAL 162° HASTA D-7, EFECTUE VIRAJE DE GOTA A LA IZQUIERDA DENTRO DE 10 NM HACIA EL VOR/DME/SJD HASTA LA ALTITUD MINIMA DE ESPERA.

MISSED APCH: CLIMB VIA SJD VOR R-162° TO D-7, THEN TURN LEFT WITHIN 10 NM TO VOR/DME/SJD AT THE MINIMUM HOLDING ALTITUDE.

RMK: - NO UTILIZAR PATRONES DE ESPERA SIMULTANEAMENTE A LA MISMA ALTITUD DO NOT USE HOLDING PATTERNS AT THE SAME ALTITUDE.
- NO UTILIZAR RADIOALTIMETRO COMO REFERENCIA PARA DETERMINAR ALTURA SOBRE EL AEROPUERTO POR CONDICIONES OROGRAFICAS DO NOT USE RADIO ALTIMETER AS REFERENCE TO DETERMINE ALTITUDE OVER AIRPORT DUE TO OROGRAPHIC CONDITIONS.
- EN CASO DE FALLA DEL DME EN CUALQUIER PUNTO DEL PROCEDIMIENTO MANTENGA ULTIMA ALTITUD Y PROSIGAA LA ESTACION DE ACUERDO CON INSTRUCCIONES DEL ATC IN CASE OF DME FAILURE DURING THE PROCEDURE MAINTAIN LAST ASSIGNED ALTITUDE AND PROCEED TO THE STATION IN ACCORDANCE WITH ATC INSTRUCTIONS.
- DME REQUERIDO DME REQUIRED



| | | | | | | | | | | | | | | |
|---------------------------------------|------------|----|-----|-----|-------------|-----|-----|-----|---|----|-------------|-------------|-------------|------------|
| GRADIENTE DE DESCENSO RATE OF DESCENT | FAP-MAPT 6 | | | | 5.7% (3.2°) | | | | ALTITUD MINIMA SEGUN DISTANCIA MINIMUM ALTITUDE ACCORDING TO DISTANCE | NM | 6 | 5 | 4 | 3 |
| | GS (KTS) | 80 | 100 | 120 | 140 | 160 | 180 | 200 | | FT | 2100 (1719) | 1760 (1379) | 1410 (1029) | 1070 (689) |

| | | | |
|---------------|-----|---------------------------------|---|
| CAMBIOS: FREQ | CAT | DIRECTO STRAIGHT-IN | CIRCULANDO CIRCLING |
| | | OCA (OCH) / MDA (MDH) 920 (539) | CNL SECTOR "W" RWY 16/34 OCA (OCH) / MDA (MDH) |
| | A | 1 (1600 M) | 980 (599) - 1 (1600 M) |
| | B | 1 1/2 (2400 M) | 2480 (2099) - 3 (4800 M) |