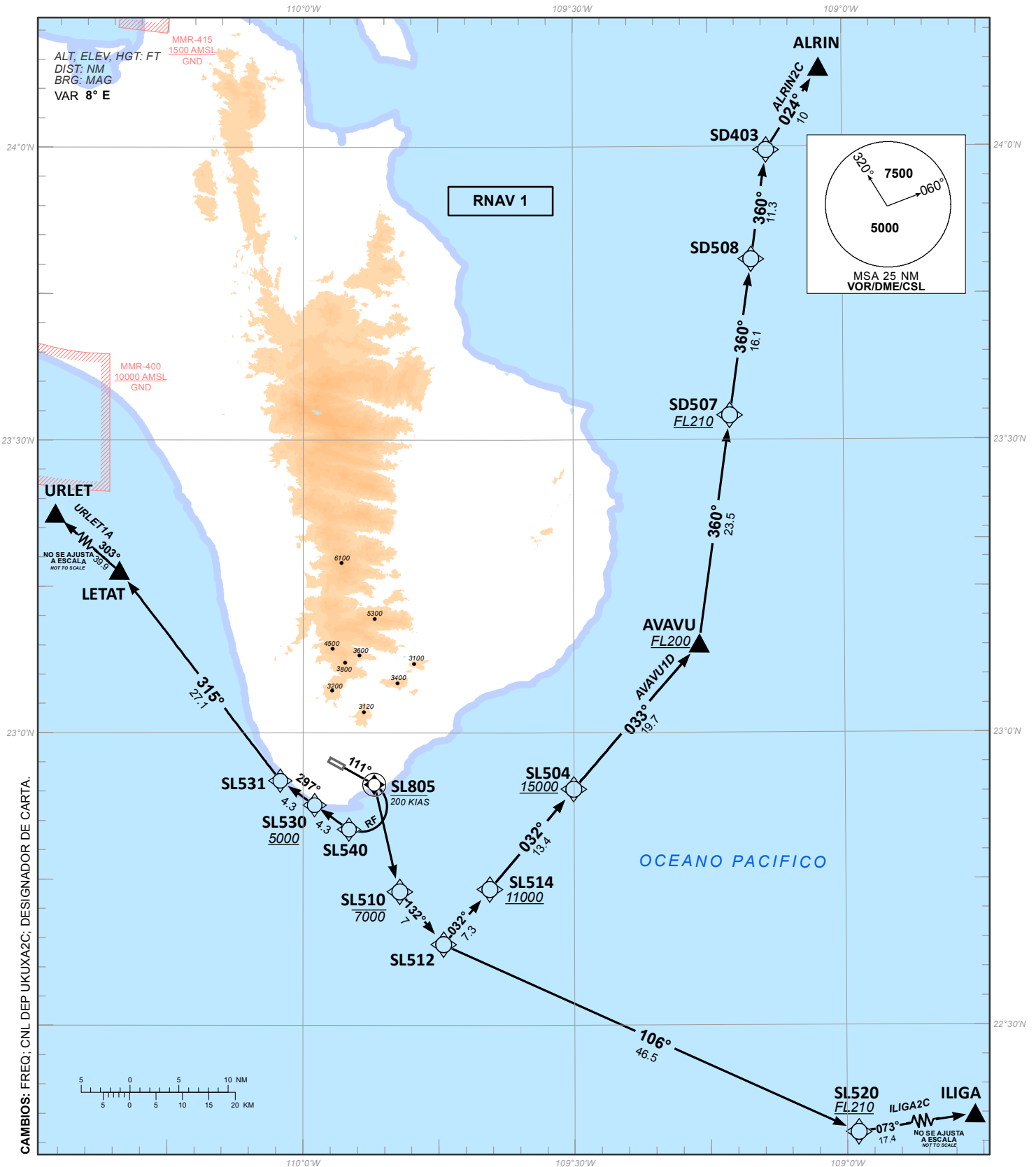


CARTA DE SALIDA NORMALIZADA -
VUELO POR INSTRUMENTOS (SID)
STANDARD DEPARTURE CHART - INSTRUMENT (SID)

CABO SAN LUCAS / CABO SAN LUCAS INTL (MMSL)
RNAV RWY 11

AVAVU1D, ALRIN2C, ILIGA2C, URLET1A

| | | | | |
|--|----------------------|------------------------------|----------------------|-----------------------|
| TA 18500 | TWR 118.60 | APP 120.90, 119.25 | ATIS 127.0 | AD ELEV 692 FT |
| RMK: - GNSS REQUERIDO GNSS REQUIRED | | | | |



CAMBIOS: FREQ; CNL DEP UKUXA2C; DESIGNADOR DE CARTA.

TABLA DE CODIFICACIÓN DEL PROCEDIMIENTO DE SALIDA POR INSTRUMENTOS RNAV PISTA 11

RUNWAY 11 RNAV INSTRUMENT DEPARTURE PROCEDURE CODING TABLE

ALRIN-2C

| Número de serie / Serial Number | Descriptor de trayectoria / Path terminator | Identificador de punto de recorrido / Waypoint identifier | Sobrevuelo / Fly Over | Curso / derrota Course / Track *MAG (*T) | Variación Magnética / Magnetic variation (*) | Distancia / Distance (NM) | Dirección del Viraje / Turn direction | Altitud / Altitude (FT) | Velocidad / Speed (KTS) | VPA (*) / TCH (FT) | Especificación de Navegación / Navigation specification |
|---------------------------------|---|---|-----------------------|--|--|---------------------------|---------------------------------------|-------------------------|-------------------------|--------------------|---|
| 001 | CF | SL805 | - | 111 (119.4) | -8 | 3.9 | - | - | -200 | - | RNAV 1 |
| 002 | TF | SL510 | - | 159 (166.6) | -8 | 11.3 | - | -7000 | - | - | RNAV 1 |
| 003 | TF | SL512 | - | 132 (140.3) | -8 | 7 | - | - | - | - | RNAV 1 |
| 004 | TF | SL514 | - | 32 (40) | -8 | 7.3 | - | +1100 | - | - | RNAV 1 |
| 005 | TF | SL504 | - | 32 (40) | -8 | 13.4 | - | +15000 | - | - | RNAV 1 |
| 006 | TF | AVAVU | - | 33 (40.8) | -8 | 19.7 | - | +FL200 | - | - | RNAV 1 |
| 007 | TF | SD507 | - | 360 (7.9) | -8 | 23.5 | - | +FL210 | - | - | RNAV 1 |
| 008 | TF | SD508 | - | 360 (8) | -8 | 16.1 | - | - | - | - | RNAV 1 |
| 009 | TF | SD403 | - | 360 (8) | -8 | 11.3 | - | - | - | - | RNAV 1 |
| 010 | TF | ALRIN | - | 24 (32.4) | -8 | 10 | - | - | - | - | RNAV 1 |

UKUXA-2C

| Número de serie / Serial Number | Descriptor de trayectoria / Path terminator | Identificador de punto de recorrido / Waypoint identifier | Sobrevuelo / Fly Over | Curso / derrota Course / Track *MAG (*T) | Variación Magnética / Magnetic variation (*) | Distancia / Distance (NM) | Dirección del Viraje / Turn direction | Altitud / Altitude (FT) | Velocidad / Speed (KTS) | VPA (*) / TCH (FT) | Especificación de Navegación / Navigation specification |
|---------------------------------|---|---|-----------------------|--|--|---------------------------|---------------------------------------|-------------------------|-------------------------|--------------------|---|
| 001 | CF | SL805 | - | 111 (119.4) | -8 | 3.9 | - | - | -200 | - | RNAV 1 |
| 002 | TF | SL510 | - | 159 (166.6) | -8 | 11.3 | - | -7000 | - | - | RNAV 1 |
| 003 | TF | SL512 | - | 132 (140.3) | -8 | 7 | - | - | - | - | RNAV 1 |
| 004 | TF | SL514 | - | 32 (40) | -8 | 7.3 | - | +1100 | - | - | RNAV 1 |
| 005 | TF | SL504 | - | 32 (40) | -8 | 13.4 | - | +15000 | - | - | RNAV 1 |
| 006 | TF | AVAVU | - | 33 (40.8) | -8 | 19.7 | - | +FL200 | - | - | RNAV 1 |
| 007 | TF | UKUXA | - | 47 (55.1) | -8 | 27.2 | - | +FL210 | - | - | RNAV 1 |

AVAVU-1D

| Número de serie / Serial Number | Descriptor de trayectoria / Path terminator | Identificador de punto de recorrido / Waypoint identifier | Sobrevuelo / Fly Over | Curso / derrota Course / Track *MAG (*T) | Variación Magnética / Magnetic variation (*) | Distancia / Distance (NM) | Dirección del Viraje / Turn direction | Altitud / Altitude (FT) | Velocidad / Speed (KTS) | VPA (*) / TCH (FT) | Especificación de Navegación / Navigation specification |
|---------------------------------|---|---|-----------------------|--|--|---------------------------|---------------------------------------|-------------------------|-------------------------|--------------------|---|
| 001 | CF | SL805 | - | 111 (119.4) | -8 | 3.9 | - | - | -200 | - | RNAV 1 |
| 002 | TF | SL510 | - | 159 (166.6) | -8 | 11.3 | - | -7000 | - | - | RNAV 1 |
| 003 | TF | SL512 | - | 132 (140.3) | -8 | 7 | - | - | - | - | RNAV 1 |
| 004 | TF | SL514 | - | 32 (40) | -8 | 7.3 | - | +1100 | - | - | RNAV 1 |
| 005 | TF | SL504 | - | 32 (40) | -8 | 13.4 | - | +15000 | - | - | RNAV 1 |
| 006 | TF | AVAVU | - | 33 (40.8) | -8 | 19.7 | - | +FL200 | - | - | RNAV 1 |

ILIGA-2C

| Número de serie / Serial Number | Descriptor de trayectoria / Path terminator | Identificador de punto de recorrido / Waypoint identifier | Sobrevuelo / Fly Over | Curso / derrota Course / Track *MAG (*T) | Variación Magnética / Magnetic variation (°) | Distancia / Distance (NM) | Dirección del Viraje / Turn direction | Altitud / Altitude (FT) | Velocidad / Speed (KTS) | VPA (°) / TCH (FT) | Especificación de Navegación / Navigation specification |
|---------------------------------|---|---|-----------------------|--|--|---------------------------|---------------------------------------|-------------------------|-------------------------|--------------------|---|
| 001 | CF | SL805 | - | 111 (119.4) | -8 | 3.9 | - | - | -200 | - | RNAV 1 |
| 002 | TF | SL510 | - | 159 (166.6) | -8 | 11.3 | - | -7000 | - | - | RNAV 1 |
| 003 | TF | SL512 | - | 132 (140.3) | -8 | 7 | - | - | - | - | RNAV 1 |
| 004 | TF | SL520 | - | 106 (114.3) | -8 | 46.5 | - | +FL210 | - | - | RNAV 1 |
| 005 | TF | ILIGA | - | 73 (81.3) | -8 | 17.4 | - | - | - | - | RNAV 1 |

URLET-1A

| Número de serie / Serial Number | Descriptor de trayectoria / Path terminator | Identificador de punto de recorrido / Waypoint identifier | Sobrevuelo / Fly Over | Curso / derrota Course / Track *MAG (*T) | Variación Magnética / Magnetic variation (°) | Distancia / Distance (NM) | Dirección del Viraje / Turn direction | Altitud / Altitude (FT) | Velocidad / Speed (KTS) | VPA (°) / TCH (FT) | Especificación de Navegación / Navigation specification |
|---------------------------------|---|---|-----------------------|--|--|---------------------------|---------------------------------------|-------------------------|-------------------------|--------------------|---|
| 001 | CF | SL805 | Y | 111 (119.4) | -8 | 3.9 | R | - | -200 | - | RNAV 1 |
| 002 | RF* | SL540 | - | - | -8 | - | - | - | - | - | RNAV 1 |
| 003 | TF | SL530 | - | 297 (305.4) | -8 | 4.3 | - | +5000 | - | - | RNAV 1 |
| 004 | TF | SL531 | - | 297 (305.4) | -8 | 4.3 | - | - | - | - | RNAV 1 |
| 005 | TF | LETAT | - | 315 (322.5) | -8 | 27.1 | - | - | - | - | RNAV 1 |
| 006 | TF | URLET | - | 303 (311.1) | -8 | 39.9 | - | - | - | - | RNAV 1 |

RF* INFORMACIÓN ADICIONAL

| Numero de Serie | Centro del Arco | Radio NM | Dirección del Viraje |
|-----------------|-----------------|----------|----------------------|
| 003 | SLRF1 | 2.6 | R |

LAS SALIDAS **ALRIN-2C, UKUXA-2C, ILIGA-2C Y URLET-1A** REQUIEREN UN GRADIENTE MÍNIMO DE ASCENSO DE **360 FT/NM (5.9%)** HASTA ALCANZAR **2500 FT.** (*THE SID'S ALRIN-2C, UKUXA-2C, ILIGA-2C AND URLET-1A REQUIRE A MINIMUM CLIMB GRADIENT OF 360 FT/NM (5.9%) UNTIL CROSSING 2500 FT.*)

REGIMEN DE ASCENSO / RATE OF CLIMB

***PDG: PENDIENTE DE DISEÑO DEL PROCEDIMIENTO / PROCEDURE DESIGN GRADIENT**

| *PDG VEL (GS) KTS | 80 | 100 | 120 | 140 | 160 | 180 | 200 |
|-------------------|-----|-----|-----|-----|-----|------|------|
| FT/MIN | 480 | 600 | 720 | 840 | 960 | 1080 | 1200 |

COORDENADAS DE LOS PUNTOS DE RECORRIDO
WAYPOINT COORDINATES

| Punto de recorrido / Waypoint | Coordenadas / Coordinates | Punto de recorrido / Waypoint | Coordenadas / Coordinates |
|-------------------------------|-------------------------------------|-------------------------------|-------------------------------------|
| ALRIN | 24° 08' 08.8" N 109° 02' 34.6" W | SL514 | 22° 43' 57.6" N 109° 39' 20.7" W |
| AVAVU | 23° 09' 08.4" N 109° 16' 06.4" W | SL520 | 22° 19' 02.3" N 108° 58' 43.3" W |
| ILIGA | 22° 21' 38.8" N 108° 40' 12.4" W | SL530 | 22° 52' 37.1" N 109° 58' 42.8" W |
| LETAT | 23° 16' 38.5" N 110° 20' 24.1" W | SL531 | 22° 55' 07.0" N 110° 02' 30.8" W |
| SD403 | 23° 59' 40.5" N 109° 08' 25.9" W | SL540 | 22° 50' 07.2" N 109° 54' 55.0" W |
| SD507 | 23° 32' 30.7" N 109° 12' 36.2" W | SL805 | 22° 54' 43.0" N 109° 52' 07.1" W |
| SD508 | 23° 48' 29.7" N 109° 10' 09.1" W | SLRF1 | 22° 52' 25.1" N 109° 53' 31.1" W |
| SL504 | 22° 54' 12.9" N 109° 30' 02.4" W | UKUXA | 23° 24' 44.0" N 108° 51' 48.7" W |
| SL510 | 22° 43' 43.9" N 109° 49' 17.8" W | URLET | 23° 42' 52.9" N 110° 53' 07.7" W |
| SL512 | 22° 38' 18.9" N 109° 44' 27.3" W | | |