

CARTA DE APROXIMACION  
POR INSTRUMENTOS (IAC)

SANTA LUCIA / FELIPE ANGELES INTL (MMSM)

INSTRUMENT APPROACH CHART (IAC)

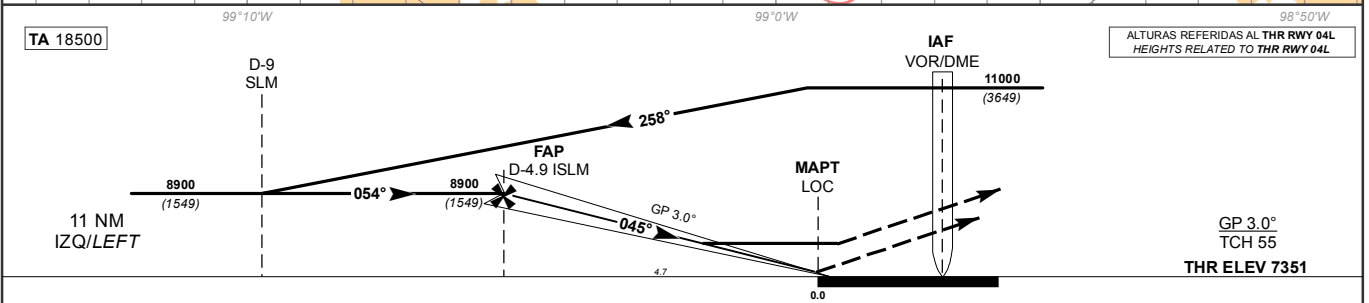
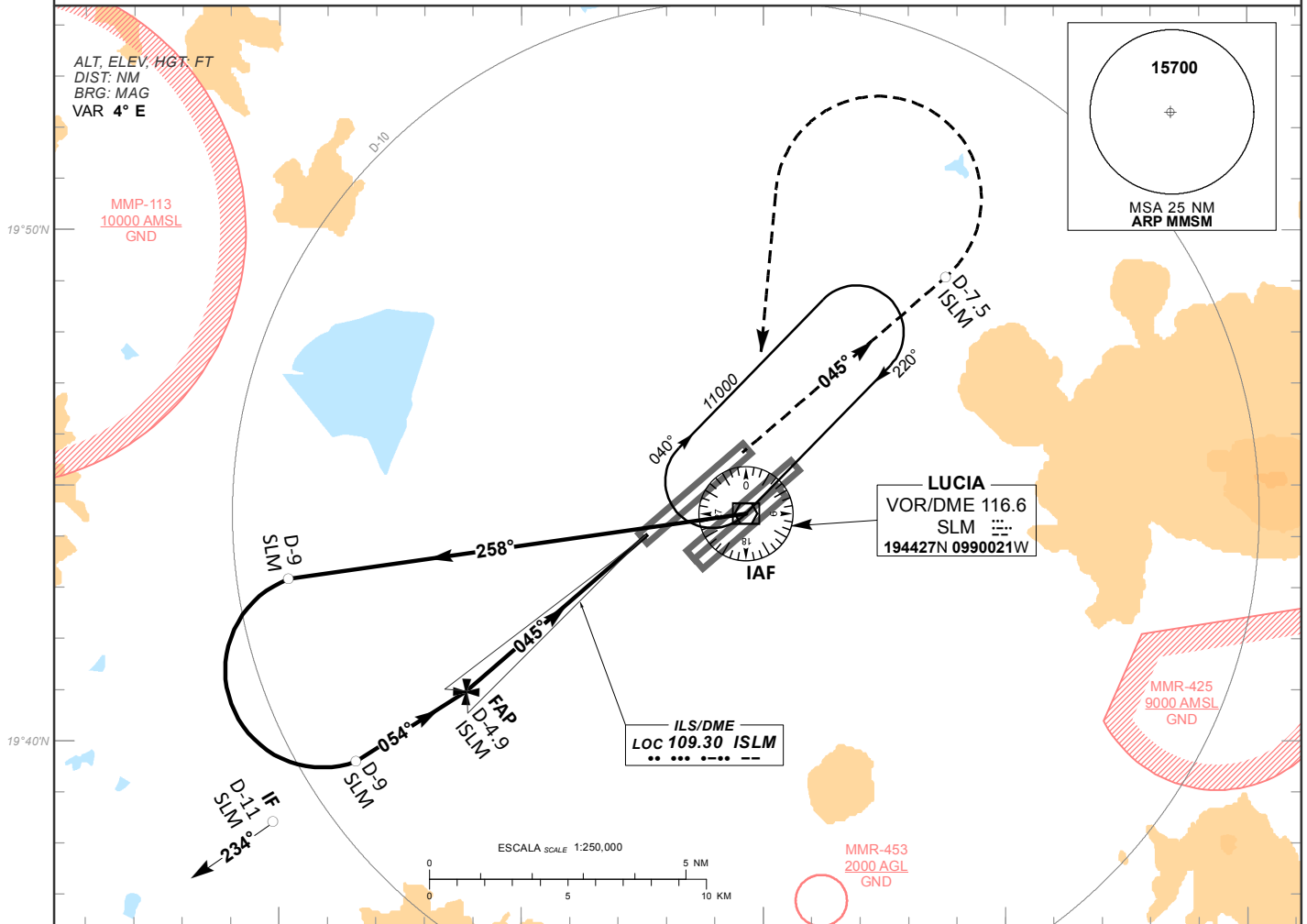
ILS Y OR LOC Y RWY 04L

TWR <b>118.25, 118.30, 118.925</b>	APP <b>119.0, 128.85</b>	D-ATIS <b>127.70</b>	EMERG <b>121.50</b>	AD ELEV <b>7362 FT</b>
---------------------------------------	-----------------------------	-------------------------	------------------------	------------------------

APCH FRUSTRADA: ASCIENDA EN RUMBO 045° HASTA D-7.5 ISLM, EFECTUE VIRAJE DE GOTTA A LA IZQUIERDA HACIA EL VOR/DME/SLM HASTA LA ALTITUD MINIMA DE ESPERA O INSTRUCCIONES DEL ATC.

MISSED APCH: CLIMB ON TRACK 045° TO D-7.5 ISLM, THEN TURN LEFT TO VOR/DME/SLM AT MINIMUM HOLDING ALTITUDE OR ATC INSTRUCTIONS.

RMK: - VOR/DME REQUERIDO VOR/DME REQUIRED.



GRADIENTE DE DESCENSO RATE OF DESCENT	FAP-MAPT 4.7								5.2% (3.0°)				ALTITUD MINIMA SEGUN DISTANCIA MINIMUM ALTITUDE ACCORDING TO DISTANCE	NM	4	3	2	1	
	GS (KTS)	80	100	120	140	160	180	200	FT	8610 (1259)	8300 (949)	7980 (629)							7660 (309)
	FT / MIN	424	530	636	742	848	954	1060											
MIN : SEC	3:32	2:49	2:21	2:01	1:46	1:34	1:25												

CAT	CAT I		LOC		CIRCULANDO CIRCLING CNL SECTOR "S" RWY 04L/22R OCA (OCH) / MDA (MDH)			
	DA (DH) 7551 (200)		OCA (OCH) / MDA (MDH) 7850 (499)					
	1/2 (800 M)		1/2 (800 M)		8050 (688) - 1 (1600 M)			
	1/2 (800 M)		1 (1600 M)		8560 (1198) - 3 (4800 M)			

CAMBIOS: MMR-453.