

CARTA DE APROXIMACION  
POR INSTRUMENTOS (IAC)

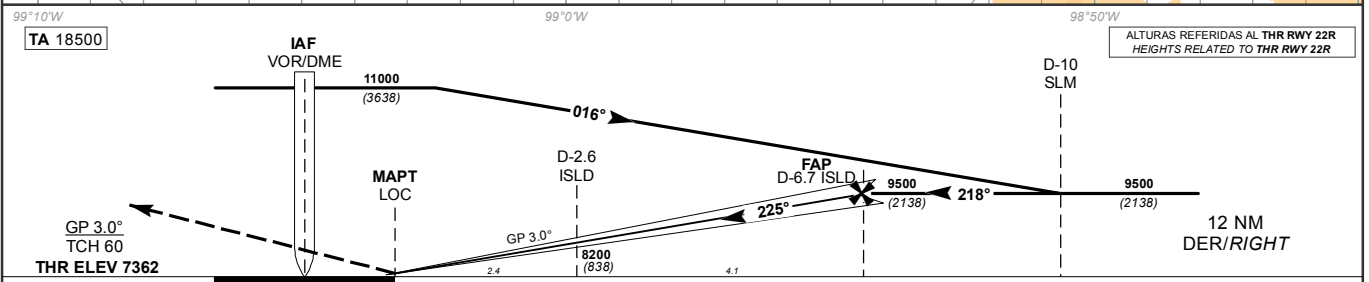
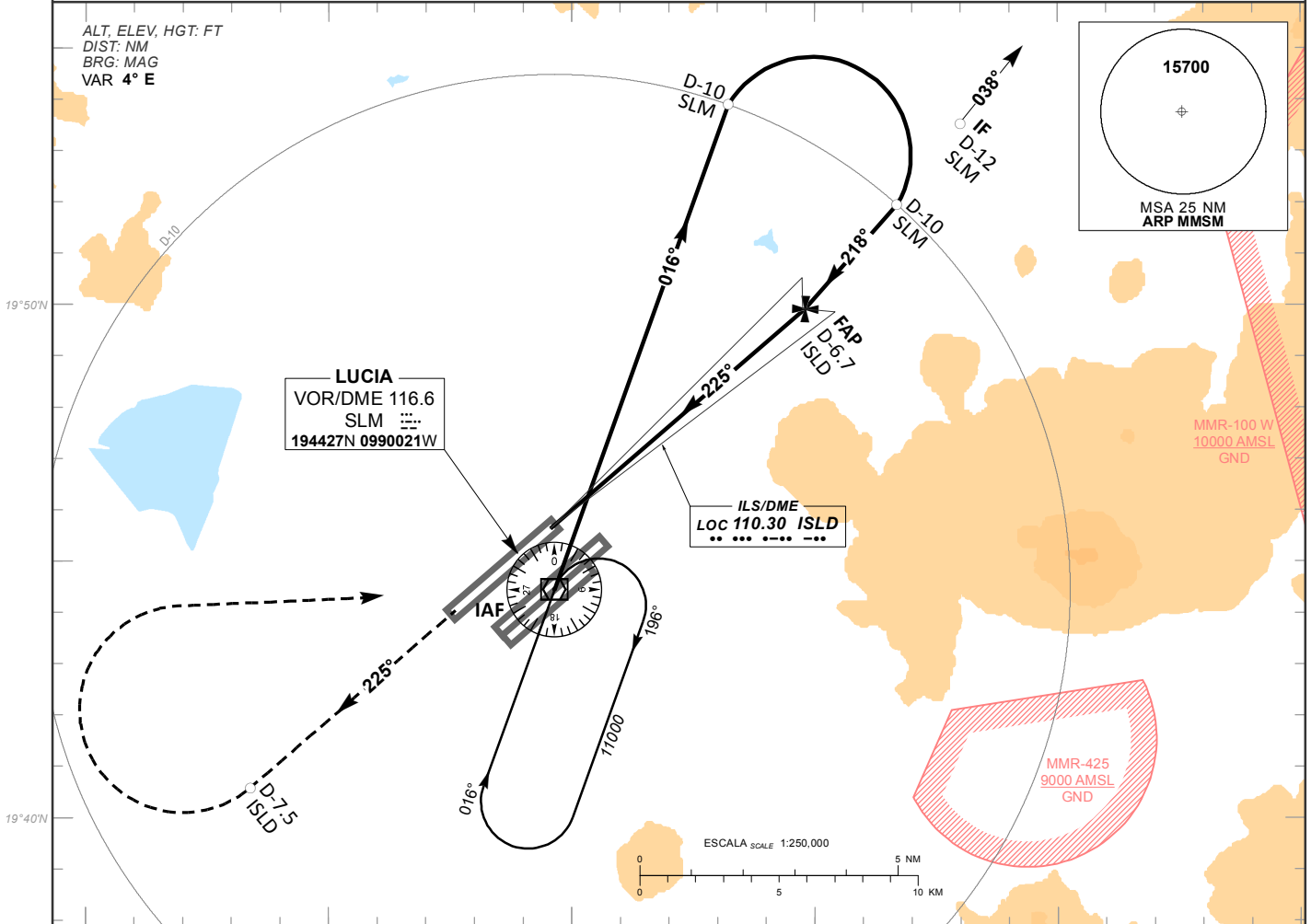
SANTA LUCIA / FELIPE ANGELES INTL (MMSM)

INSTRUMENT APPROACH CHART (IAC)

ILS Y OR LOC Y RWY 22R

TWR <b>118.25, 118.30, 118.925</b>	APP <b>119.0, 128.85</b>	D-ATIS <b>127.70</b>	EMERG <b>121.50</b>	AD ELEV <b>7362 FT</b>
---------------------------------------	-----------------------------	-------------------------	------------------------	------------------------

**APCH FRUSTRADA:** ASCIENDA EN RUMBO 225° HASTA D-7.5 ISLD, EFECTUE VIRAJE DE GOTAA LA DERECHA HACIA EL VOR/DME/SLM HASTA LA ALTITUD MINIMA DE ESPERA O INSTRUCCIONES DEL ATC.  
**MISSED APCH:** CLIMB ON TRACK 225° TO D-7.5 ISLD, THEN TURN RIGHT TO VOR/DME/SLM AT MINIMUM HOLDING ALTITUDE OR ATC INSTRUCTIONS.  
RMK: -VOR/DME REQUERIDO VOR/DME REQUIRED.



GRADIENTE DE DESCENSO RATE OF DESCENT	FAP-MAPT 6.6		5.2% (3.0°)				ALTITUD MINIMA SEGUN DISTANCIA MINIMUM ALTITUDE ACCORDING TO DISTANCE	NM	6	5	4	3	2	1		
	GS (KTS)	80	100	120	140	160									180	200
	FT / MIN	425	531	637	744	850									956	1062
	MIN : SEC	4:53	3:55	3:16	2:48	2:27	2:10	1:57	FT	9280 (1918)	8960 (1598)	8640 (1278)	8320 (958)	8000 (638)	7680 (318)	

C A M B I O S : N I L.	CAT	CAT I	LOC	CIRCULANDO CIRCLING CNL SECTOR "S" RWY 04L/22R OCA (OCH) / MDA (MDH)
		DA (DH) <b>7562 (200)</b>	OCA (OCH) / MDA (MDH) <b>7840 (478)</b>	
		<b>1/2 (800 M)</b>	<b>1/2 (800 M)</b>	<b>8050 (688) - 1 (1600 M)</b>
		<b>1 (800 M)</b>	<b>1 (1600 M)</b>	<b>8780 (1418) - 3 (4800 M)</b>