

CARTA DE APROXIMACION
POR INSTRUMENTOS (IAC)

SANTA LUCIA / FELIPE ANGELES INTL (MMSM)

INSTRUMENT APPROACH CHART (IAC)

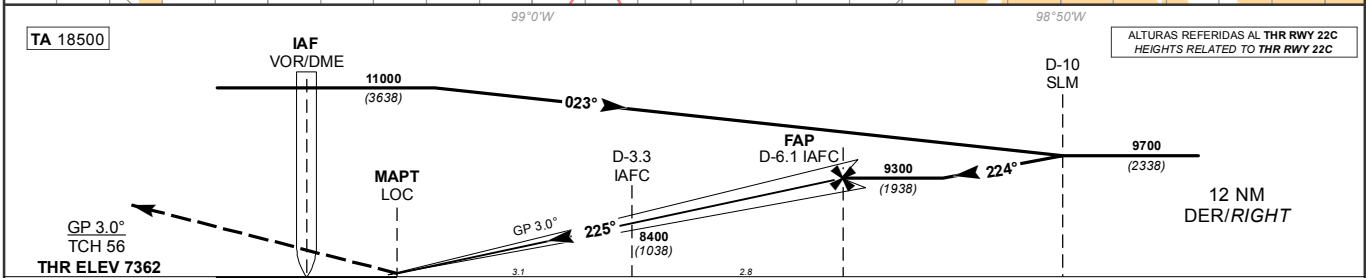
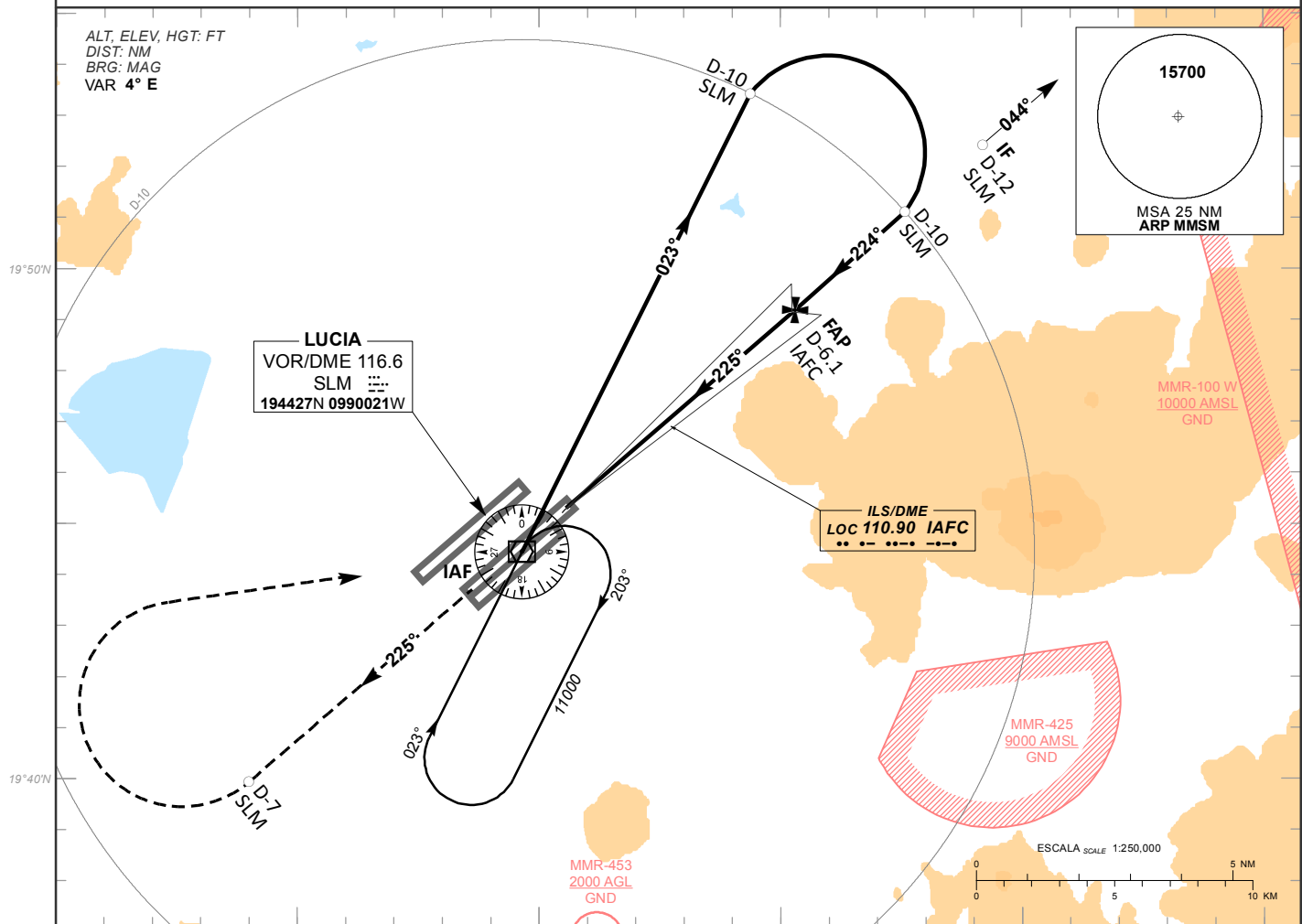
ILS Y OR LOC Y RWY 22C

TWR 118.25, 118.30, 118.925	APP 119.0, 128.85	D-ATIS 127.70	EMERG 121.50	AD ELEV 7362 FT
--------------------------------	----------------------	------------------	-----------------	-----------------

APCH FRUSTRADA: ASCIENDA EN RADIAL 225° HASTA D-7 SLM, EFECTUE VIRAJE DE GOTA A LA DERECHA HACIA EL VOR/DME/SLM HASTA LA ALTITUD MINIMA DE ESPERA O INSTRUCCIONES DEL ATC.

MISSED APCH: CLIMB VIA SLM VOR R-225° TO D-7 SLM, THEN TURN RIGHT TO VOR/DME/SLM AT MINIMUM HOLDING ALTITUDE OR ATC INSTRUCTIONS.

RMK: -VOR/DME REQUERIDO VOR/DME REQUIRED.



GRADIENTE DE DESCENSO RATE OF DESCENT	FAP-MAPT 5.9		5.2% (3.0°)				ALTITUD MINIMA SEGUN DISTANCIA MINIMUM ALTITUDE ACCORDING TO DISTANCE	NM	5	4	3	2	1		
	GS (KTS)	80	100	120	140	160		180	200	FT	8950 (1588)	8630 (1268)	8310 (948)	7990 (628)	7670 (308)
	FT / MIN	425	532	638	744	851		957	1063						
	MIN : SEC	4:26	3:32	2:57	2:32	2:13	1:58	1:46							

CAT	CAT I		LOC		CIRCULANDO CIRCLING		
	DA (DH) 7562 (200)		OCA (OCH) / MDA (MDH) 8000 (638)		CNL SECTOR "S" RWY 04C/22C		
					OCA (OCH) / MDA (MDH)		
	1/2 (800 M)		1/2 (800 M)		8050 (688) - 1 (1600 M)		
A							
B							
C	1/2 (800 M)				8560 (1198) - 3 (4800 M)		
D			1 3/8 (2200 M)				

CAMBIOS: MMR-453.