

CARTA DE SALIDA NORMALIZADA -
VUELO POR INSTRUMENTOS (SID)

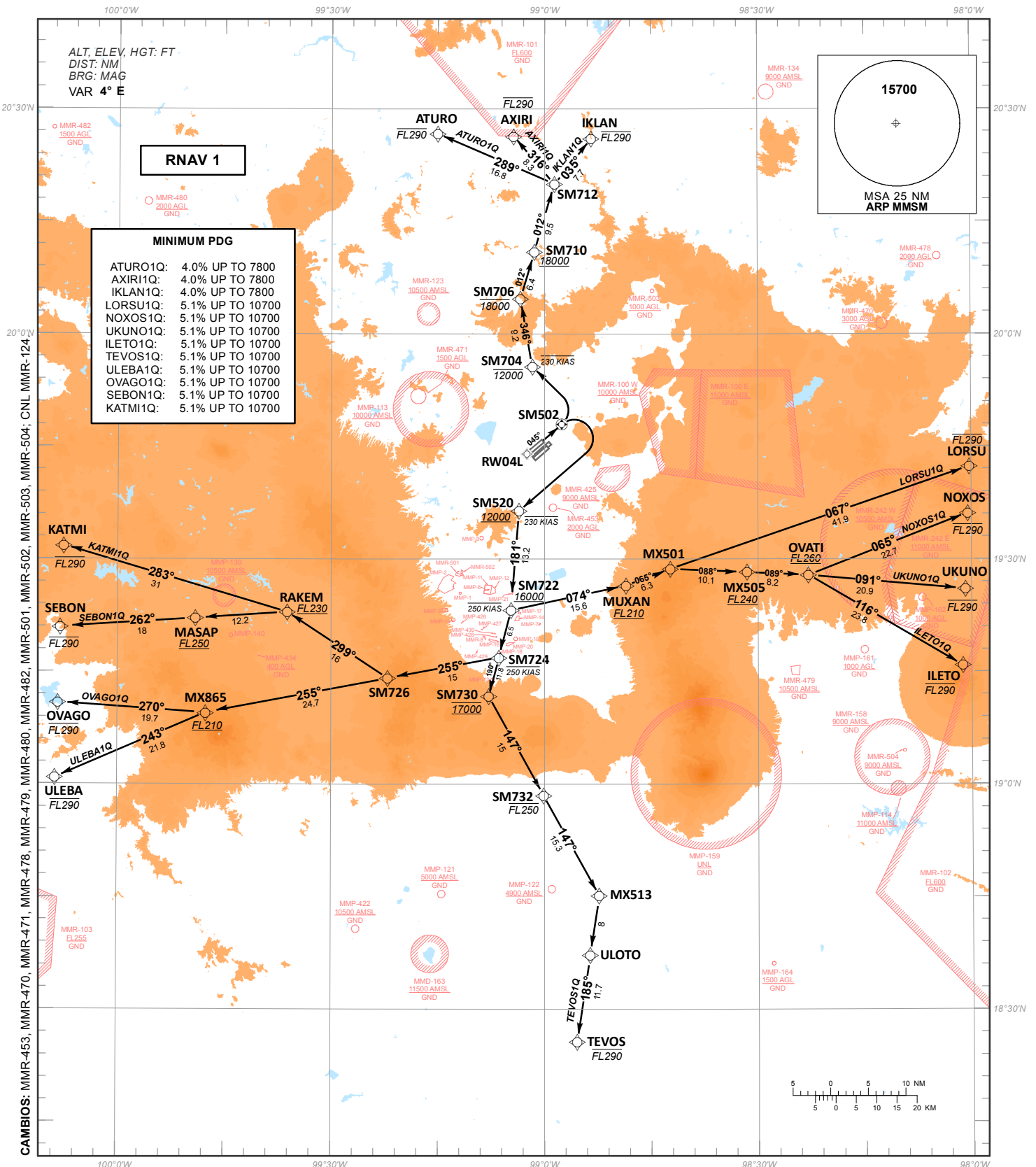
SANTA LUCIA / FELIPE ANGELES INTL (MMSM)
RNAV RYW 04L

STANDARD DEPARTURE CHART - INSTRUMENT (SID)

ATURO1Q, AXIRI1Q, IKLAN1Q, LORSU1Q, NOXOS1Q, UKUNO1Q,
ILETO1Q, TEVOS1Q, ULEBA1Q, OVAGO1Q, SEBON1Q, KATMI1Q

| | | | | | |
|----------|-------------------------|---------------|--------|--------|-----------------|
| TA 18500 | TWR | APP | D-ATIS | EMERG | AD ELEV 7362 FT |
| | 118.25, 118.30, 118.925 | 119.0, 128.85 | 127.70 | 121.50 | |

RMK: -GNSS REQUERIDO *GNSS REQUIRED*
-RADAR OPERATIVO *OPERATIVE RADAR*
-VER ZONAS PROHIBIDAS, RESTRINGIDAS Y PELIGROSAS EN ENR 5.1 *SEE PROHIBITED, RESTRICTED AND DANGEROUS AREAS IN ENR 5.1*



MINIMUM PDG

| | |
|----------|------------------|
| ATURO1Q: | 4.0% UP TO 7800 |
| AXIRI1Q: | 4.0% UP TO 7800 |
| IKLAN1Q: | 4.0% UP TO 7800 |
| LORSU1Q: | 5.1% UP TO 10700 |
| NOXOS1Q: | 5.1% UP TO 10700 |
| UKUNO1Q: | 5.1% UP TO 10700 |
| ILETO1Q: | 5.1% UP TO 10700 |
| TEVOS1Q: | 5.1% UP TO 10700 |
| ULEBA1Q: | 5.1% UP TO 10700 |
| OVAGO1Q: | 5.1% UP TO 10700 |
| SEBON1Q: | 5.1% UP TO 10700 |
| KATMI1Q: | 5.1% UP TO 10700 |

TABLA DE CODIFICACIÓN DEL PROCEDIMIENTO DE SALIDA POR INSTRUMENTOS RNAV PISTA 04L
 RUNWAY 04L RNAV INSTRUMENT DEPARTURE PROCEDURE CODING TABLE

ATURO 1Q

| Número de serie / Serial Number | Descriptor de trayectoria / Path terminator | Identificador de punto de recorrido / Waypoint identifier | Sobrevuelo / Fly Over | Curso / derrota Course / Track °MAG (°T) | Variación Magnética / Magnetic variation(°) | Distancia / Distance (NM) | Dirección del Viraje / Turn direction | Altitud / Altitude (FT) | Velocidad / Speed (KTS) | VPA (°) / TCH (FT) | Especificación de Navegación / Navigation Specification |
|---------------------------------|---|---|-----------------------|--|---|---------------------------|---------------------------------------|-------------------------|-------------------------|--------------------|---|
| 001 | IF | RW04L | - | - | 4 | - | - | - | - | - | RNAV 1 |
| 002 | TF | SM502 | Y | 045 (049.2) | 4 | 6 | - | - | | - | RNAV 1 |
| 003 | DF | SM704 | - | - | 4 | - | L | -12000 | -230 | - | RNAV 1 |
| 004 | TF | SM706 | - | 346 (350.1) | 4 | 9.2 | | -18000 | | - | RNAV 1 |
| 005 | TF | SM710 | - | 012 (016.4) | 4 | 6.4 | | +18000 | | - | RNAV 1 |
| 006 | TF | SM712 | - | 012 (016.4) | 4 | 9.5 | | | | - | RNAV 1 |
| 007 | TF | ATURO | - | 289 (293.4) | 4 | 16.8 | | -FL290 | | | RNAV 1 |

AXIRI 1Q

| Número de serie / Serial Number | Descriptor de trayectoria / Path terminator | Identificador de punto de recorrido / Waypoint identifier | Sobrevuelo / Fly Over | Curso / derrota Course / Track °MAG (°T) | Variación Magnética / Magnetic variation(°) | Distancia / Distance (NM) | Dirección del Viraje / Turn direction | Altitud / Altitude (FT) | Velocidad / Speed (KTS) | VPA (°) / TCH (FT) | Especificación de Navegación / Navigation Specification |
|---------------------------------|---|---|-----------------------|--|---|---------------------------|---------------------------------------|-------------------------|-------------------------|--------------------|---|
| 001 | IF | RW04L | - | - | 4 | - | - | - | - | - | RNAV 1 |
| 002 | TF | SM502 | Y | 045 (049.2) | 4 | 6 | - | - | | - | RNAV 1 |
| 003 | DF | SM704 | - | - | 4 | - | L | -12000 | -230 | - | RNAV 1 |
| 004 | TF | SM706 | - | 346 (350.1) | 4 | 9.2 | | -18000 | | - | RNAV 1 |
| 005 | TF | SM710 | - | 012 (016.4) | 4 | 6.4 | | +18000 | | - | RNAV 1 |
| 006 | TF | SM712 | - | 012 (016.4) | 4 | 9.5 | | | | - | RNAV 1 |
| 007 | TF | AXIRI | - | 316 (319.6) | 4 | 8.3 | | -FL290 | | | RNAV 1 |

IKLAN 1Q

| Número de serie / Serial Number | Descriptor de trayectoria / Path terminator | Identificador de punto de recorrido / Waypoint identifier | Sobrevuelo / Fly Over | Curso / derrota Course / Track °MAG (°T) | Variación Magnética / Magnetic variation(°) | Distancia / Distance (NM) | Dirección del Viraje / Turn direction | Altitud / Altitude (FT) | Velocidad / Speed (KTS) | VPA (°) / TCH (FT) | Especificación de Navegación / Navigation Specification |
|---------------------------------|---|---|-----------------------|--|---|---------------------------|---------------------------------------|-------------------------|-------------------------|--------------------|---|
| 001 | IF | RW04L | - | - | 4 | - | - | - | - | - | RNAV 1 |
| 002 | TF | SM502 | Y | 045 (049.2) | 4 | 6 | - | - | | - | RNAV 1 |
| 003 | DF | SM704 | - | - | 4 | - | L | -12000 | -230 | - | RNAV 1 |
| 004 | TF | SM706 | - | 346 (350.1) | 4 | 9.2 | | -18000 | | - | RNAV 1 |
| 005 | TF | SM710 | - | 012 (016.4) | 4 | 6.4 | | +18000 | | - | RNAV 1 |
| 006 | TF | SM712 | - | 012 (016.4) | 4 | 9.5 | | | | - | RNAV 1 |
| 007 | TF | IKLAN | - | 035 (039.1) | 4 | 7.7 | | -FL290 | | | RNAV 1 |

LORSU 1Q

| Número de serie / Serial Number | Descriptor de trayectoria / Path terminator | Identificador de punto de recorrido / Waypoint identifier | Sobrevuelo / Fly Over | Curso / derrota Course / Track °MAG (°T) | Variación Magnética / Magnetic variation(°) | Distancia / Distance (NM) | Dirección del Viraje / Turn direction | Altitud / Altitude (FT) | Velocidad / Speed (KTS) | VPA (°) / TCH (FT) | Especificación de Navegación / Navigation Specification |
|---------------------------------|---|---|-----------------------|--|---|---------------------------|---------------------------------------|-------------------------|-------------------------|--------------------|---|
| 001 | IF | RW04L | - | - | 4 | - | - | - | - | - | RNAV 1 |
| 002 | TF | SM502 | Y | 045 (049.2) | 4 | 6 | - | - | - | - | RNAV 1 |
| 003 | DF | SM520 | | | 4 | | R | +12000 | -230 | | RNAV 1 |
| 004 | TF | SM722 | - | 181 (184.6) | 4 | 13.2 | | +16000 | -250 | - | RNAV 1 |
| 005 | TF | MUXAN | - | 074 (077.9) | 4 | 15.6 | | +FL210 | | - | RNAV 1 |
| 006 | TF | MX501 | - | 065 (069.4) | 4 | 6.3 | | | | - | RNAV 1 |
| 007 | TF | LORSU | - | 067 (071.0) | 4 | 41.9 | | -FL290 | | - | RNAV 1 |

NOXOS 1Q

| Número de serie / Serial Number | Descriptor de trayectoria / Path terminator | Identificador de punto de recorrido / Waypoint identifier | Sobrevuelo / Fly Over | Curso / derrota Course / Track °MAG (°T) | Variación Magnética / Magnetic variation(°) | Distancia / Distance (NM) | Dirección del Viraje / Turn direction | Altitud / Altitude (FT) | Velocidad / Speed (KTS) | VPA (°) / TCH (FT) | Especificación de Navegación / Navigation Specification |
|---------------------------------|---|---|-----------------------|--|---|---------------------------|---------------------------------------|-------------------------|-------------------------|--------------------|---|
| 001 | IF | RW04L | - | - | 4 | - | - | - | - | - | RNAV 1 |
| 002 | TF | SM502 | Y | 045 (049.2) | 4 | 6 | - | - | - | - | RNAV 1 |
| 003 | DF | SM520 | | | 4 | | R | +12000 | -230 | | RNAV 1 |
| 004 | TF | SM722 | - | 181 (184.6) | 4 | 13.2 | | +16000 | -250 | - | RNAV 1 |
| 005 | TF | MUXAN | - | 074 (077.9) | 4 | 15.6 | | +FL210 | | - | RNAV 1 |
| 006 | TF | MX501 | - | 065 (069.4) | 4 | 6.3 | | | | - | RNAV 1 |
| 007 | TF | MX505 | - | 088 (092.4) | 4 | 10.1 | | +FL240 | | - | RNAV 1 |
| 008 | TF | OVATI | - | 089 (092.5) | 4 | 8.2 | | +FL260 | | | RNAV 1 |
| 009 | TF | NOXOS | - | 065 (068.8) | 4 | 22.7 | | -FL290 | | | RNAV 1 |

UKUNO 1Q

| Número de serie / Serial Number | Descriptor de trayectoria / Path terminator | Identificador de punto de recorrido / Waypoint identifier | Sobrevuelo / Fly Over | Curso / derrota Course / Track °MAG (°T) | Variación Magnética / Magnetic variation(°) | Distancia / Distance (NM) | Dirección del Viraje / Turn direction | Altitud / Altitude (FT) | Velocidad / Speed (KTS) | VPA (°) / TCH (FT) | Especificación de Navegación / Navigation Specification |
|---------------------------------|---|---|-----------------------|--|---|---------------------------|---------------------------------------|-------------------------|-------------------------|--------------------|---|
| 001 | IF | RW04L | - | - | 4 | - | - | - | - | - | RNAV 1 |
| 002 | TF | SM502 | Y | 045 (049.2) | 4 | 6 | - | - | - | - | RNAV 1 |
| 003 | DF | SM520 | | | 4 | | R | +12000 | -230 | | RNAV 1 |
| 004 | TF | SM722 | - | 181 (184.6) | 4 | 13.2 | | +16000 | -250 | - | RNAV 1 |
| 005 | TF | MUXAN | - | 074 (077.9) | 4 | 15.6 | | +FL210 | | - | RNAV 1 |
| 006 | TF | MX501 | - | 065 (069.4) | 4 | 6.3 | | | | - | RNAV 1 |
| 007 | TF | MX505 | - | 088 (092.4) | 4 | 10.1 | | +FL240 | | - | RNAV 1 |
| 008 | TF | OVATI | - | 089 (092.5) | 4 | 8.2 | | +FL260 | | | RNAV 1 |
| 009 | TF | UKUNO | - | 091 (095.1) | 4 | 20.9 | | -FL290 | | | RNAV 1 |

ILETO 1Q

| Número de serie / Serial Number | Descriptor de trayectoria / Path terminator | Identificador de punto de recorrido / Waypoint identifier | Sobrevuelo / Fly Over | Curso / derrota Course / Track °MAG (°T) | Variación Magnética / Magnetic variation(°) | Distancia / Distance (NM) | Dirección del Viraje / Turn direction | Altitud / Altitude (FT) | Velocidad / Speed (KTS) | VPA (°) / TCH (FT) | Especificación de Navegación / Navigation Specification |
|---------------------------------|---|---|-----------------------|--|---|---------------------------|---------------------------------------|-------------------------|-------------------------|--------------------|---|
| 001 | IF | RW04L | - | - | 4 | - | - | - | - | - | RNAV 1 |
| 002 | TF | SM502 | Y | 045 (049.2) | 4 | 6 | - | - | | - | RNAV 1 |
| 003 | DF | SM520 | | | 4 | | R | +12000 | -230 | | RNAV 1 |
| 004 | TF | SM722 | - | 181 (184.6) | 4 | 13.2 | | +16000 | -250 | - | RNAV 1 |
| 005 | TF | MUXAN | - | 074 (077.9) | 4 | 15.6 | | +FL210 | | - | RNAV 1 |
| 006 | TF | MX501 | - | 065 (069.4) | 4 | 6.3 | | | | - | RNAV 1 |
| 007 | TF | MX505 | - | 088 (092.4) | 4 | 10.1 | | +FL240 | | - | RNAV 1 |
| 008 | TF | OVATI | - | 089 (092.5) | 4 | 8.2 | | +FL260 | | | RNAV 1 |
| 009 | TF | ILETO | - | 116 (120.3) | 4 | 23.8 | | -FL290 | | | RNAV 1 |

TEVOS 1Q

| Número de serie / Serial Number | Descriptor de trayectoria / Path terminator | Identificador de punto de recorrido / Waypoint identifier | Sobrevuelo / Fly Over | Curso / derrota Course / Track °MAG (°T) | Variación Magnética / Magnetic variation(°) | Distancia / Distance (NM) | Dirección del Viraje / Turn direction | Altitud / Altitude (FT) | Velocidad / Speed (KTS) | VPA (°) / TCH (FT) | Especificación de Navegación / Navigation Specification |
|---------------------------------|---|---|-----------------------|--|---|---------------------------|---------------------------------------|-------------------------|-------------------------|--------------------|---|
| 001 | IF | RW04L | - | - | 4 | - | - | - | - | - | RNAV 1 |
| 002 | TF | SM502 | Y | 045 (049.2) | 4 | 6 | - | - | | - | RNAV 1 |
| 003 | DF | SM520 | | | 4 | | R | +12000 | -230 | | RNAV 1 |
| 004 | TF | SM722 | - | 181 (184.6) | 4 | 13.2 | | +16000 | -250 | - | RNAV 1 |
| 005 | TF | SM730 | - | 190 (194.5) | 4 | 11.8 | | @17000 | | - | RNAV 1 |
| 006 | TF | SM732 | - | 147 (150.9) | 4 | 15 | | -FL250 | | - | RNAV 1 |
| 007 | TF | MX513 | - | 147 (150.9) | 4 | 15.3 | | | | - | RNAV 1 |
| 008 | TF | ULOTO | - | 185 (188.6) | 4 | 8 | | | | - | RNAV 1 |
| 009 | TF | TEVOS | - | 185 (188.6) | 4 | 11.7 | | -FL290 | | - | RNAV 1 |

ULEBA 1Q

| Número de serie / Serial Number | Descriptor de trayectoria / Path terminator | Identificador de punto de recorrido / Waypoint identifier | Sobrevuelo / Fly Over | Curso / derrota Course / Track °MAG (°T) | Variación Magnética / Magnetic variation(°) | Distancia / Distance (NM) | Dirección del Viraje / Turn direction | Altitud / Altitude (FT) | Velocidad / Speed (KTS) | VPA (°) / TCH (FT) | Especificación de Navegación / Navigation Specification |
|---------------------------------|---|---|-----------------------|--|---|---------------------------|---------------------------------------|-------------------------|-------------------------|--------------------|---|
| 001 | IF | RW04L | - | - | 4 | - | - | - | - | - | RNAV 1 |
| 002 | TF | SM502 | Y | 045 (049.2) | 4 | 6 | - | - | | - | RNAV 1 |
| 003 | DF | SM520 | | | 4 | | R | +12000 | -230 | | RNAV 1 |
| 004 | TF | SM722 | - | 181 (184.6) | 4 | 13.2 | | +16000 | -250 | - | RNAV 1 |
| 005 | TF | SM724 | - | 190 (194.5) | 4 | 6.5 | | | -250 | - | RNAV 1 |
| 006 | TF | SM726 | - | 255 (259.5) | 4 | 15 | | | | - | RNAV 1 |
| 007 | TF | MX865 | - | 255 (259.4) | 4 | 24.7 | | +FL210 | | - | RNAV 1 |
| 008 | TF | ULEBA | - | 243 (246.7) | 4 | 21.8 | | -FL290 | | | RNAV 1 |

OVAGO 1Q

| Número de serie / Serial Number | Descriptor de trayectoria / Path terminator | Identificador de punto de recorrido / Waypoint identifier | Sobrevuelo / Fly Over | Curso / derrota Course / Track °MAG (°T) | Variación Magnética / Magnetic variation(°) | Distancia / Distance (NM) | Dirección del Viraje / Turn direction | Altitud / Altitude (FT) | Velocidad / Speed (KTS) | VPA (°) / TCH (FT) | Especificación de Navegación / Navigation Specification |
|---------------------------------|---|---|-----------------------|--|---|---------------------------|---------------------------------------|-------------------------|-------------------------|--------------------|---|
| 001 | IF | RW04L | - | - | 4 | - | - | - | - | - | RNAV 1 |
| 002 | TF | SM502 | Y | 045 (049.2) | 4 | 6 | - | - | | - | RNAV 1 |
| 003 | DF | SM520 | | | 4 | | R | +12000 | -230 | | RNAV 1 |
| 004 | TF | SM722 | - | 181 (184.6) | 4 | 13.2 | | +16000 | -250 | - | RNAV 1 |
| 005 | TF | SM724 | - | 190 (194.5) | 4 | 6.5 | | | -250 | - | RNAV 1 |
| 006 | TF | SM726 | - | 255 (259.5) | 4 | 15 | | | | - | RNAV 1 |
| 007 | TF | MX865 | - | 255 (259.4) | 4 | 24.7 | | +FL210 | | - | RNAV 1 |
| 008 | TF | OVAGO | - | 270 (274.0) | 4 | 19.7 | | -FL290 | | | RNAV 1 |

SEBON 1Q

| Número de serie / Serial Number | Descriptor de trayectoria / Path terminator | Identificador de punto de recorrido / Waypoint identifier | Sobrevuelo / Fly Over | Curso / derrota Course / Track °MAG (°T) | Variación Magnética / Magnetic variation(°) | Distancia / Distance (NM) | Dirección del Viraje / Turn direction | Altitud / Altitude (FT) | Velocidad / Speed (KTS) | VPA (°) / TCH (FT) | Especificación de Navegación / Navigation Specification |
|---------------------------------|---|---|-----------------------|--|---|---------------------------|---------------------------------------|-------------------------|-------------------------|--------------------|---|
| 001 | IF | RW04L | - | - | 4 | - | - | - | - | - | RNAV 1 |
| 002 | TF | SM502 | Y | 045 (049.2) | 4 | 6 | - | - | | - | RNAV 1 |
| 003 | DF | SM520 | | | 4 | | R | +12000 | -230 | | RNAV 1 |
| 004 | TF | SM722 | - | 181 (184.6) | 4 | 13.2 | | +16000 | -250 | - | RNAV 1 |
| 005 | TF | SM724 | - | 190 (194.5) | 4 | 6.5 | | | -250 | - | RNAV 1 |
| 006 | TF | SM726 | - | 255 (259.5) | 4 | 15 | | | | - | RNAV 1 |
| 007 | TF | RAKEM | - | 299 (303.3) | 4 | 16 | | +FL230 | | - | RNAV 1 |
| 008 | TF | MASAP | - | 262 (266.3) | 4 | 12.2 | | +FL250 | | | RNAV 1 |
| 009 | TF | SEBON | - | 262 (266.2) | 4 | 18 | | -FL290 | | | RNAV 1 |

KATMI 1Q

| Número de serie / Serial Number | Descriptor de trayectoria / Path terminator | Identificador de punto de recorrido / Waypoint identifier | Sobrevuelo / Fly Over | Curso / derrota Course / Track °MAG (°T) | Variación Magnética / Magnetic variation(°) | Distancia / Distance (NM) | Dirección del Viraje / Turn direction | Altitud / Altitude (FT) | Velocidad / Speed (KTS) | VPA (°) / TCH (FT) | Especificación de Navegación / Navigation Specification |
|---------------------------------|---|---|-----------------------|--|---|---------------------------|---------------------------------------|-------------------------|-------------------------|--------------------|---|
| 001 | IF | RW04L | - | - | 4 | - | - | - | - | - | RNAV 1 |
| 002 | TF | SM502 | Y | 045 (049.2) | 4 | 6 | - | - | | - | RNAV 1 |
| 003 | DF | SM520 | | | 4 | | R | +12000 | -230 | | RNAV 1 |
| 004 | TF | SM722 | - | 181 (184.6) | 4 | 13.2 | | +16000 | -250 | - | RNAV 1 |
| 005 | TF | SM724 | - | 190 (194.5) | 4 | 6.5 | | | -250 | - | RNAV 1 |
| 006 | TF | SM726 | - | 255 (259.5) | 4 | 15 | | | | - | RNAV 1 |
| 007 | TF | RAKEM | - | 299 (303.3) | 4 | 16 | | +FL230 | | - | RNAV 1 |
| 008 | TF | KATMI | - | 283 (286.7) | 4 | 31 | | -FL290 | | | RNAV 1 |

COORDENADAS DE LOS PUNTOS DE RECORRIDO
WAYPOINT COORDINATES

| Punto de recorrido / Waypoint | Coordenadas / Coordinates | Punto de recorrido / Waypoint | Coordenadas / Coordinates |
|-------------------------------|-------------------------------------|-------------------------------|-------------------------------------|
| ATURO | 20°26'44.4500"N 099°15'04.7200"W | RW04L | 19°44'02.6900"N 099°02'22.9100"W |
| AXIRI | 20°26'23.8000"N 099°04'22.1400"W | SEBON | 19°20'56.5300"N 100°07'59.6700"W |
| IKLAN | 20°26'02.1700"N 098°53'26.2200"W | SM502 | 19°48'00.0530"N 098°57'32.6510"W |
| ILETO | 19°15'49.8700"N 098°01'13.2800"W | SM520 | 19°36'25.2290"N 099°03'35.1410"W |
| KATMI | 19°31'49.6420"N 100°07'35.8700"W | SM704 | 19°55'40.2660"N 099°01'42.7670"W |
| LORSU | 19°42'20.8180"N 098°00'15.3250"W | SM706 | 20°04'43.8600"N 099°03'23.4360"W |
| MASAP | 19°22'08.7900"N 099°49'02.7800"W | SM710 | 20°10'54.3360"N 099°01'27.9480"W |
| MUXAN | 19°26'29.0900"N 098°48'31.5000"W | SM712 | 20°20'01.7390"N 098°58'37.0140"W |
| MX501 | 19°28'42.6200"N 098°42'16.8400"W | SM722 | 19°23'12.4540"N 099°04'42.3310"W |
| MX505 | 19°28'16.1260"N 098°31'33.6720"W | SM724 | 19°16'53.3880"N 099°06'25.4190"W |
| MX513 | 18°45'09.1"N 098°52'18.7"W | SM726 | 19°14'07.7390"N 099°22'00.5870"W |
| MX865 | 19°09'32.5300"N 099°47'36.7700"W | SM732 | 18°58'32.6190"N 099°00'07.7460"W |
| NOXOS | 19°36'08.3500"N 098°00'28.9200"W | TEVOS | 18°25'39.4100"N 098°55'24.9200"W |
| OVAGO | 19°10'54.5900"N 100°08'21.5500"W | UKUNO | 19°26'01.5600"N 098°00'51.0300"W |
| OVATI | 19°27'54.2380"N 098°22'53.9170"W | ULEBA | 19°00'52.6300"N 100°08'43.3700"W |
| RAKEM | 19°22'56.5400"N 099°36'09.8300"W | ULOTO | 18°37'15.1800"N 098°53'34.2200"W |