

CARTA DE APROXIMACION  
POR INSTRUMENTOS (IAC)

TAMPICO / GRAL. FRANCISCO JAVIER MINA INTL (MMTM)

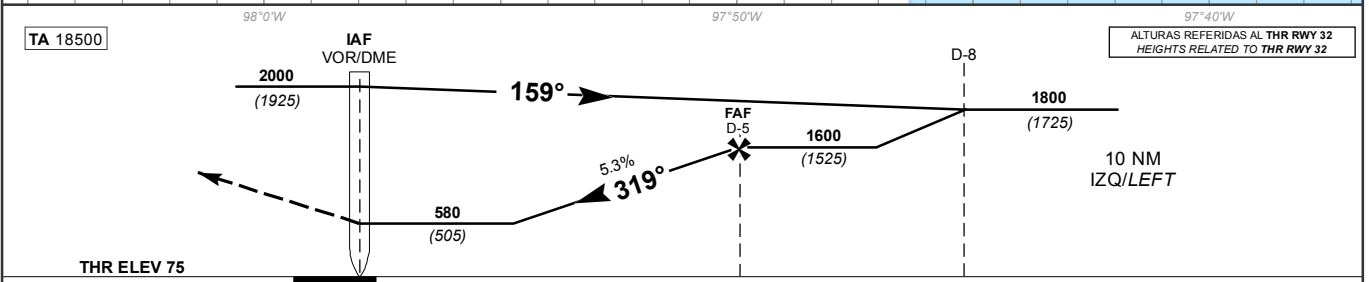
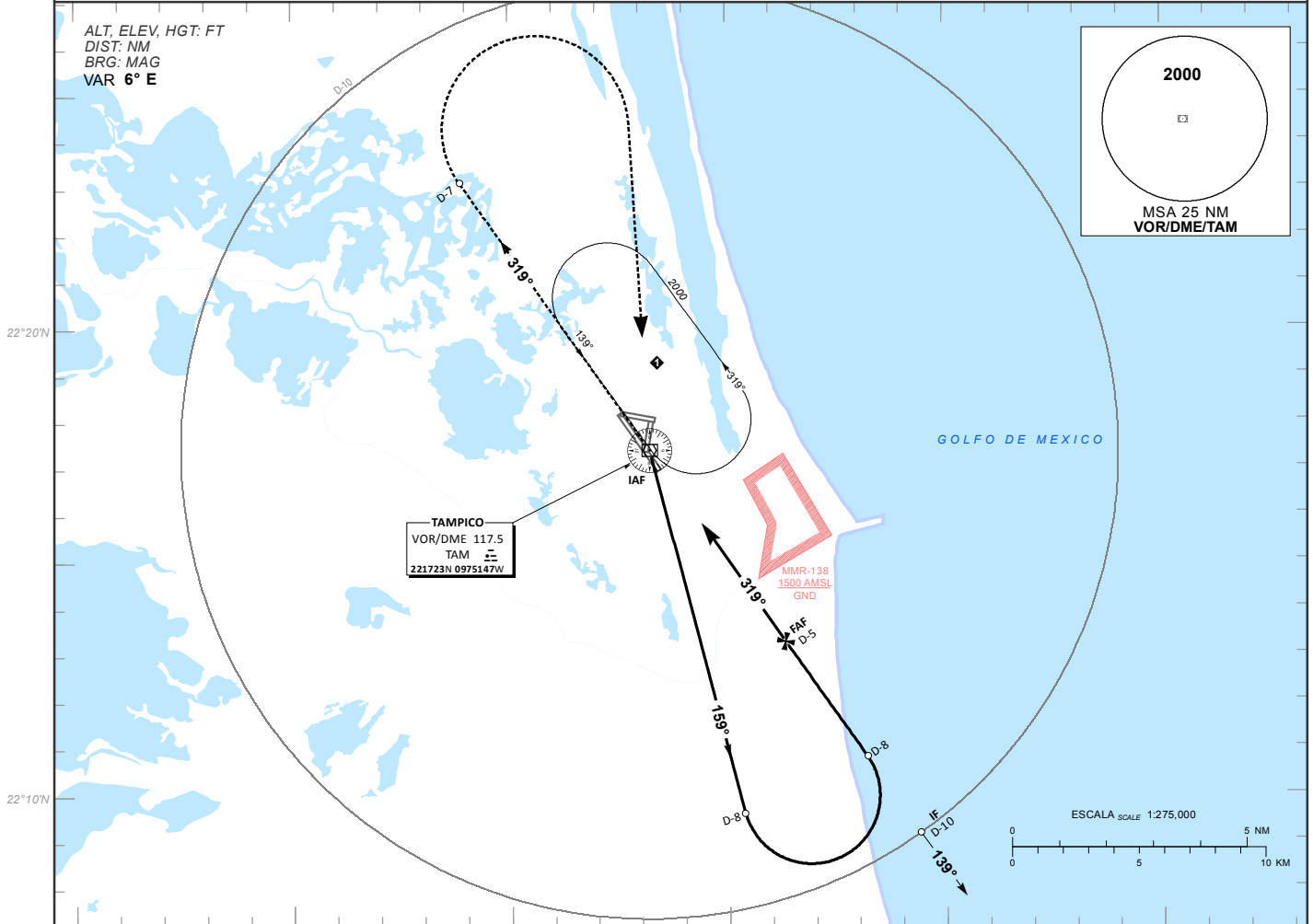
INSTRUMENT APPROACH CHART (IAC)

VOR Z RWY 32

<b>TWR</b> <b>118.3</b>	<b>APP</b> <b>120.3</b>	<b>AD ELEV 82 FT</b>
----------------------------	----------------------------	----------------------

**APCH FRUSTRADA:** ASCIENDA EN RADIAL 319° HASTA D-7, EFECTUE VIRAJE DE GOTA A LA DERECHA DENTRO DE 10 NM HACIA EL VOR/DME/TAM HASTA LA ALTITUD MINIMA DE ESPERA.  
**MISSED APCH:** CLIMB VIA TAM VOR R-319° TO D-7, THEN TURN RIGHT WITHIN 10 NM TO VOR/DME/TAM AT MINIMUM HOLDING ALTITUDE.

RMK:  
- DME REQUERIDO DME REQUIRED.



GRADIENTE DE DESCENSO RATE OF DESCENT	FAF-MAPT 5.0								5.3% (3.0°)				ALTITUD MINIMA SEGUN DISTANCIA MINIMUM ALTITUDE ACCORDING TO DISTANCE	
	GS (KTS)	80	100	120	140	160	180	200	NM	5	4	3		2
	FT / MIN	428	535	643	750	857	964	1071	FT	1600 (1525)	1280 (1205)	960 (885)		640 (565)
	MIN : SEC	3:45	3:00	2:30	2:09	1:52	1:40	1:30						

CAMBIOS: ALTITUD.	<b>CAT</b>	<b>DIRECTO STRAIGHT-IN</b>	<b>CIRCULANDO CIRCLING</b>
		OCA (OCH) / MDA (MDH) <b>580 (505)</b>	OCA (OCH) / MDA (MDH) <b>680 (598)</b>
	<b>A</b>	<b>1 (1600 M)</b>	<b>1 (1600 M)</b>
	<b>B</b>	<b>1 1/2 (2400 M)</b>	<b>1 1/2 (2400 M)</b>
<b>C</b>	<b>1 1/2 (2400 M)</b>	<b>2 (3200 M)</b>	
<b>D</b>	<b>1 1/2 (2400 M)</b>	<b>2 (3200 M)</b>	