

PLANO DE ESTACIONAMIENTO Y ATRAQUE DE AERONAVES /  
AIRCRAFT PARKING/DOCKING CHART

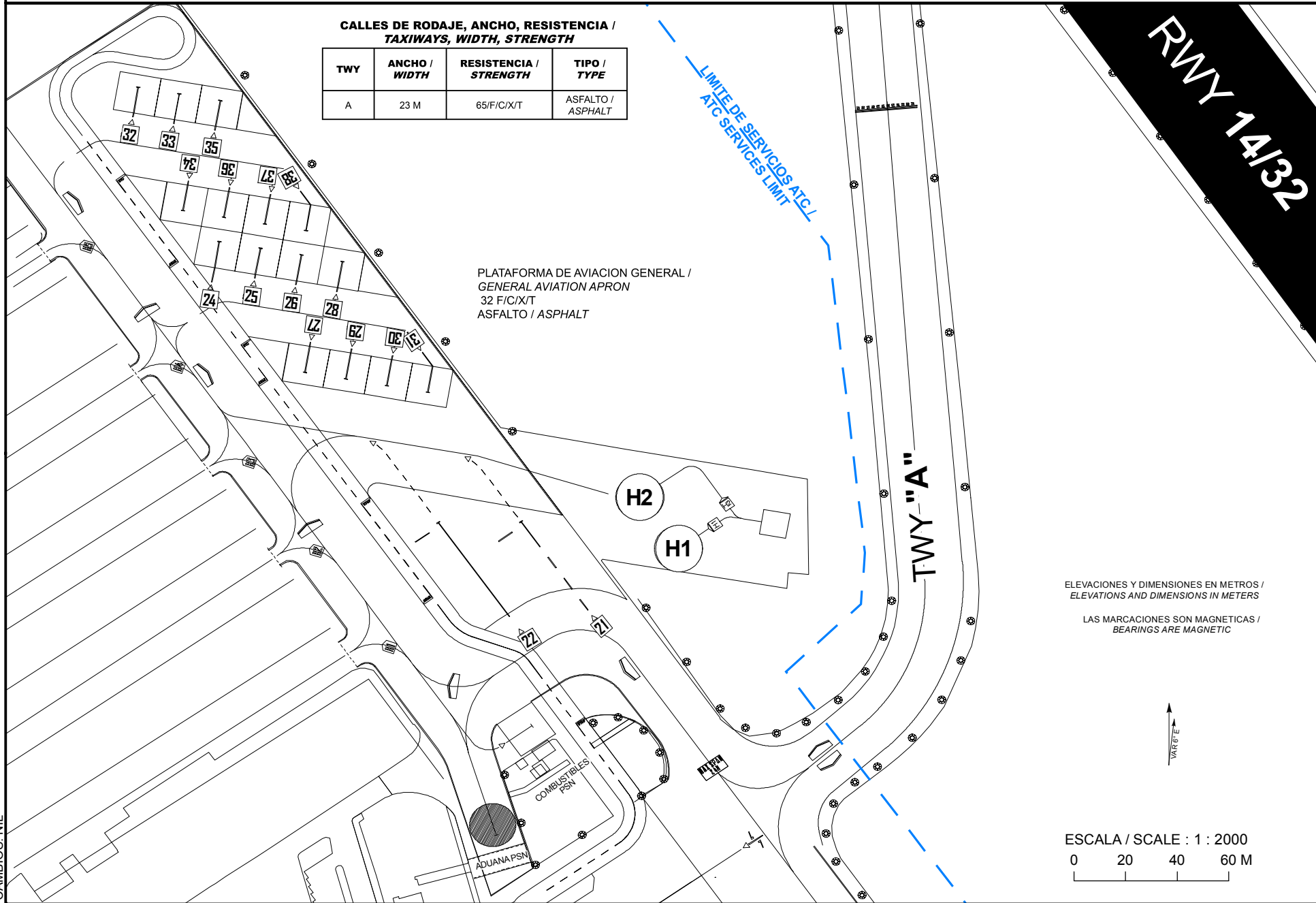
ELEV AD 25 M

TWR	118.3
APP	120.3

**TAMPICO**  
AEROPUERTO INTL /  
INTL AIRPORT  
**GRAL FRANCISCO JAVIER MINA**

**CALLES DE RODAJE, ANCHO, RESISTENCIA /  
TAXIWAYS, WIDTH, STRENGTH**

TWY	ANCHO / WIDTH	RESISTENCIA / STRENGTH	TIPO / TYPE
A	23 M	65/F/C/X/T	ASFALTO / ASPHALT



CAMBIOS: NIL

**COORDENADAS INS DE PUESTOS DE ESTACIONAMIENTO DE AERONAVES AVIACION GENERAL /  
COORDINATES INS, FOR AIRCRAFT STANDS, GENERAL AVIATION**

PSN	LAT (N)	LONG (W)
21	22° 17' 31.69"	097° 52' 12.82"
22	22° 17' 31.68"	097° 52' 13.86"
24	22° 17' 35.21"	097° 52' 16.60"
25	22° 17' 35.13"	097° 52' 16.09"
26	22° 17' 35.04"	097° 52' 15.57"
27	22° 17' 33.57"	097° 52' 15.54"
28	22° 17' 34.96"	097° 52' 15.06"
29	22° 17' 33.48"	097° 52' 15.02"
30	22° 17' 33.40"	097° 52' 14.50"
31	22° 17' 33.31"	097° 52' 13.99"
32	22° 17' 37.15"	097° 52' 17.62"
33	22° 17' 37.07"	097° 52' 17.11"
34	22° 17' 35.60"	097° 52' 17.07"
35	22° 17' 36.98"	097° 52' 16.59"
36	22° 17' 35.52"	097° 52' 16.55"
37	22° 17' 35.43"	097° 52' 16.03"
38	22° 17' 35.35"	097° 52' 15.52"
H1	22° 17' 31.35"	097° 52' 10.84"
H2	22° 17' 31.99"	097° 52' 11.32"
ADUANA	22° 17' 27.75"	097° 52' 13.14"
COMBUSTIBLES	22° 17' 29.12"	097° 52' 12.68"