

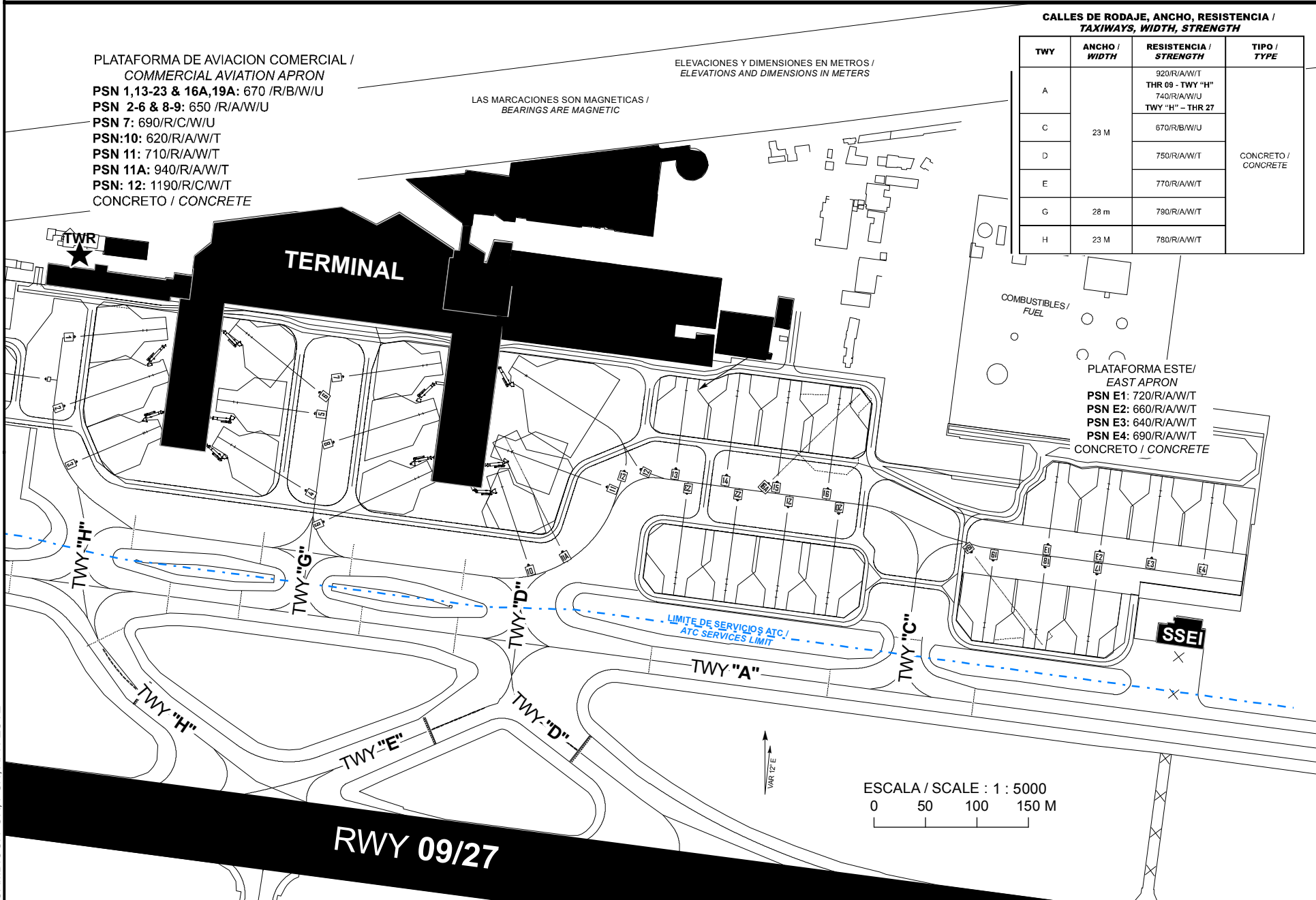
PLANO DE ESTACIONAMIENTO Y ATRAQUE DE AERONAVES /
AIRCRAFT PARKING/DOCKING CHART

ELEV AD 148.5 M

CD	122.35	
TWR	118.1	
APP	119.5	120.3
FIS	132.1	
EMERG	121.5	
ATIS	127.9	

TIJUANA
AEROPUERTO INTL /
INTL AIRPORT

GRAL ABELARDO L RODRIGUEZ



CALLES DE RODAJE, ANCHO, RESISTENCIA /
TAXIWAYS, WIDTH, STRENGTH

TWY	ANCHO / WIDTH	RESISTENCIA / STRENGTH	TIPO / TYPE
A	23 M	920/R/A/W/T THR 09 - TWY "H" 740/R/A/W/U TWY "H" - THR 27	CONCRETO / CONCRETE
C		670/R/B/W/U	
D		750/R/A/W/T	
E	770/R/A/W/T		
G	28 m	790/R/A/W/T	
H	23 M	780/R/A/W/T	

PLATAFORMA DE AVIACION COMERCIAL /
COMMERCIAL AVIATION APRON
PSN 1,13-23 & 16A,19A: 670 /R/B/W/U
PSN 2-6 & 8-9: 650 /R/A/W/U
PSN 7: 690/R/C/W/U
PSN:10: 620/R/A/W/T
PSN 11: 710/R/A/W/T
PSN 11A: 940/R/A/W/T
PSN: 12: 1190/R/C/W/T
CONCRETO / CONCRETE

ELEVACIONES Y DIMENSIONES EN METROS /
ELEVATIONS AND DIMENSIONS IN METERS

LAS MARCACIONES SON MAGNETICAS /
BEARINGS ARE MAGNETIC

PLATAFORMA ESTE /
EAST APRON
PSN E1: 720/R/A/W/T
PSN E2: 660/R/A/W/T
PSN E3: 640/R/A/W/T
PSN E4: 690/R/A/W/T
CONCRETO / CONCRETE

CAMBIOS: PCR; PSN: APN ESTE

**COORDENADAS INS DE PUESTOS DE ESTACIONAMIENTO DE AERONAVES PLATAFORMA AVIACION COMERCIAL/
 COORDINATES INS FOR AIRCRAFT STANDS COMMERCIAL AVIATION APRON**

PSN	LAT (N)	LONG (W)	ACFT
1	32° 32' 44.39"	116° 58' 38.46"	A321-200
2	32° 32' 43.18"	116° 58' 38.31"	
3	32° 32' 41.67"	116° 58' 38.54"	
4	32° 32' 41.27"	116° 58' 35.89"	
5	32° 32' 42.42"	116° 58' 35.79"	
6	32° 32' 44.20"	116° 58' 35.26"	
7	32° 32' 43.28"	116° 58' 29.67"	
8	32° 32' 41.99"	116° 58' 29.83"	
9	32° 32' 40.29"	116° 58' 30.01"	
10	32° 32' 39.98"	116° 58' 27.38"	
11	32° 32' 40.95"	116° 58' 27.17"	A321-200
11A	32° 32' 40.93"	116° 58' 27.04"	B777-200
12	32° 32' 42.94"	116° 58' 26.56"	
13	32° 32' 42.44"	116° 58' 21.51"	B737-8MAX
14	32° 32' 42.39"	116° 58' 19.89"	A321-200
15	32° 32' 42.18"	116° 58' 18.30"	
16	32° 32' 41.97"	116° 58' 16.71"	B777-200F
16A	32° 32' 41.99"	116° 58' 16.36"	
17	32° 32' 35.49"	116° 58' 09.04"	A321-200
18	32° 32' 35.71"	116° 58' 10.68"	
19	32° 32' 35.92"	116° 58' 12.30"	
19A	32° 32' 35.84"	116° 58' 10.83"	B767-200
20	32° 32' 36.82"	116° 58' 17.21"	A321-200
21	32° 32' 37.03"	116° 58' 18.80"	
22	32° 32' 37.24"	116° 58' 20.39"	
23	32° 32' 37.45"	116° 58' 21.98"	

**COORDENADAS INS DE PUESTOS DE ESTACIONAMIENTO DE AERONAVES PLATAFORMA ESTE/
 COORDINATES INS FOR AIRCRAFT STANDS EAST APRON**

PSN	LAT (N)	LONG (W)	ACFT
E1	32° 32' 39.90"	116° 58' 09.89"	A321-200
E2	32° 32' 39.68"	116° 58' 08.26"	
E3	32° 32' 39.46"	116° 58' 06.64"	
E4	32° 32' 39.25"	116° 58' 05.01"	