

CARTA DE APROXIMACION
POR INSTRUMENTOS
INSTRUMENT APPROACH
CHART (IAC)

TWR 118.5
APP 119.6

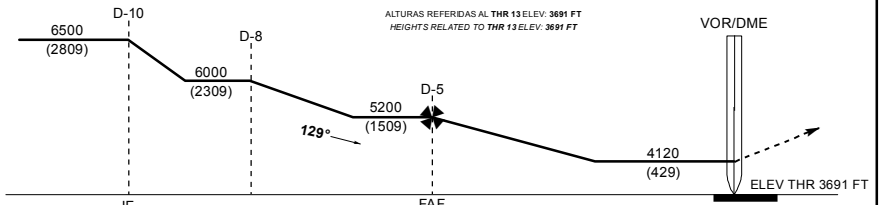
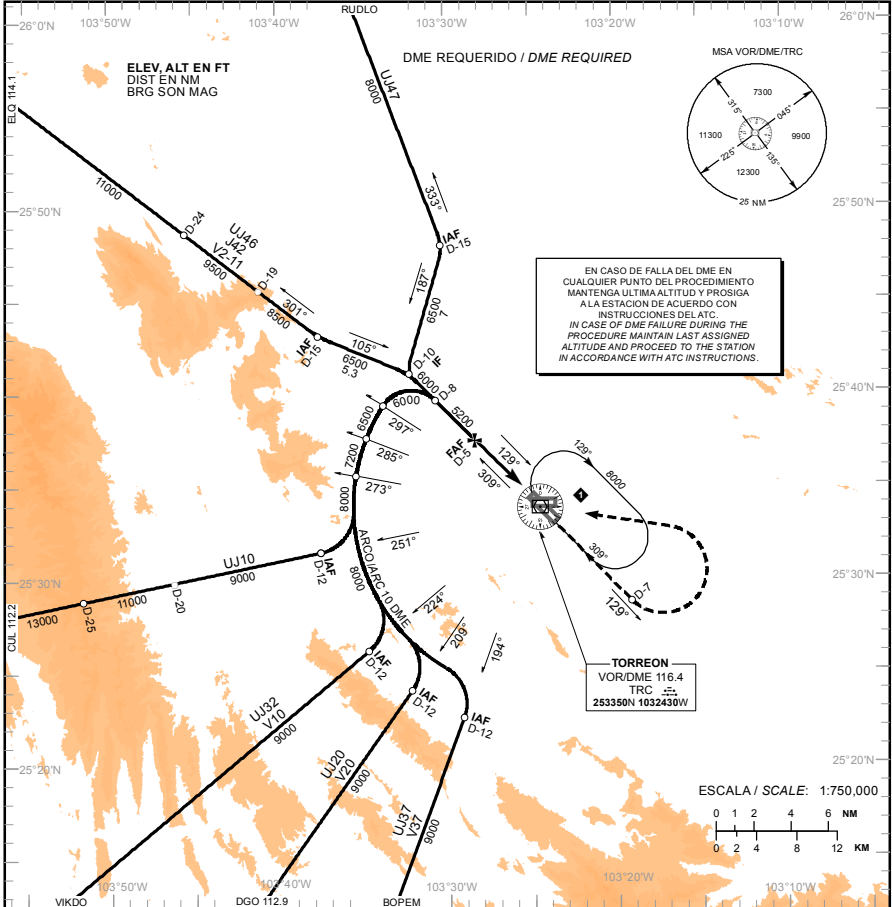
TORREON

AEROPUERTO INTL / INTL AIRPORT

AD ELEV : 3691 FT
VAR 6° E

VOR Y RWY 13

TA: 18500 FT



APROXIMACION FRUSTRADA / MISSED APPROACH

ASCIENDA EN RADIAL 129° HASTA D-7, EFECTUE VIRAJE DE GOTA A LA IZQUIERDA DENTRO DE 10 NM HACIA EL VOR/DME/TRC HASTA LA ALTITUD MINIMA DE ESPERA.

CLIMB VIA TRC VOR R-129° TO D-7, THEN TURN LEFT WITHIN 10 NM TO VOR/DME/TRC AT THE MINIMUM HOLDING ALTITUDE.

GRADIENTE DE DESCENSO / RATE OF DESCENT

| FAF - THR | VEL GS (KTS) | 80 | 100 | 120 | 140 | 160 | 180 |
|-----------|--------------|------|------|------|------|------|------|
| 4.42 NM | FT / MIN | 440 | 550 | 660 | 770 | 880 | 990 |
| 5.4% | MIN : SEC | 3:45 | 3:00 | 2:30 | 2:09 | 1:52 | 1:40 |

ALTITUD MINIMA SEGUN DISTANCIA / MINIMUM ALTITUDE ACCORDING TO DISTANCE

| NM | 4 | 3 | 2 |
|----|----------------|---------------|---------------|
| FT | 4870 (1179) | 4540 (849) | 4210 (519) |

CAMBIOS: V11 (EIQ-TRC)

| CAT | A | B | C | D |
|---------------------|---|-----------------------------|-----------------------------|---|
| DIRECTO/DIRECT | OCA (OCH) / MDA (MDH) 4120 (429) - 1 (1600 M) | 4120 (429) - 1 1/4 (2000 M) | 4120 (429) - 1 1/2 (2400 M) | |
| CIRCULANDO/CIRCLING | OCA (OCH) / MDA (MDH) 4300 (609) - 1 (1600 M) | 4300 (609) - 1 3/4 (2800 M) | 5260 (1569) - 3 (4800 M) | |