

TWR / APP 118.6
ATIS 127.9

ELEV AD 1508 FT

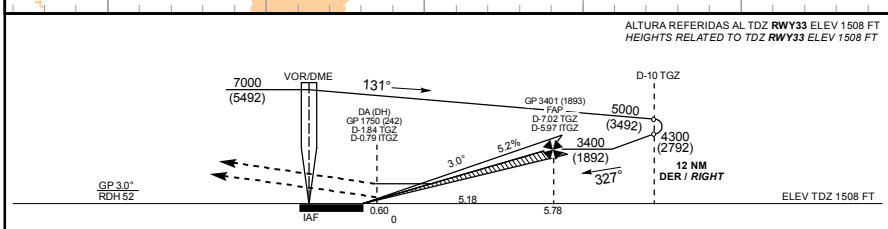
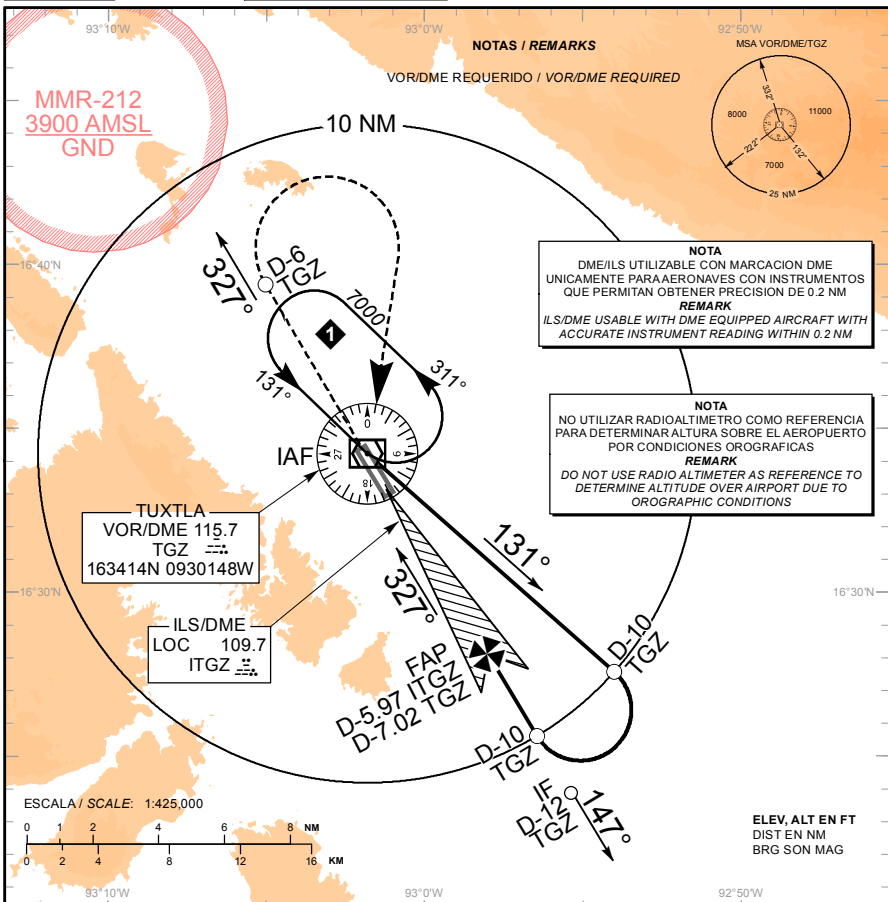
VAR 2° E

TUXTLA GUTIERREZ

AEROPUERTO INTL / INTL AIRPORT
ANGEL ALBINO CORZO

ILS Z OR LOC Z RWY 33

TA: 18500 FT



APROXIMACION FRUSTRADA / MISSED APPROACH

ASCIENDA EN RADIAL 327° HASTA D-6, EFECTUE VIRAJE DE GOTAA LA DERECHA DENTRO DE 9 NM HACIA EL VOR/DME/TGZ HASTA LA ALTITUD MINIMA DE ESPERA.

CLIMB VIA TGZ VOR R-327° TO D-6 TGZ, THEN TURN RIGHT WITHIN 9 NM TO VOR/DME/TGZ AT THE MINIMUM HOLDING ALTITUDE.

GRADIENTE DE DESCENSO / RATE OF DESCENT

FAP - THR	VEL GS (KTS)	80	100	120	140	160	180	200
5.78 NM	FT / NM	425	531	637	743	849	956	1062
5.2% (3.0°)	MIN : SEC	4:20	3:28	2:53	2:29	2:10	1:56	1:44

ALTITUD MINIMA SEGUN DISTANCIA DME/ITGZ / MINIMUM ALTITUDE ACCORDING TO DISTANCE DME/ITGZ

	NM	5.97	5	4	3	2	1
FT	3400 (1892)	3090 (1582)	2770 (1262)	2460 (952)	2140 (632)	1820 (312)	

CAMBIOS-ATIS

CAT	A	B	C	D
CAT I COMPLETO/FULL	DA (DH) 1750 (242) - 3/4 (1200 M)			
LOC COMPLETO/FULL	OCA (OCH) / MDA (MDH) 2100 (592) - 1 (1600 M)	2100 (592) - 1 3/4 (2800 M)		2100 (592) - 2 (3200 M)
CIRCLING CNL SECTOR "W" RWY 18/33	OCA (OCH) / MDA (MDH) 2180 (672) - 1 (1600 M)	2180 (672) - 2 (3200 M)		2220 (712) - 2 1/4 (3600 M)