

CARTA DE APROXIMACION
POR INSTRUMENTOS (IAC)

VERACRUZ / GRAL. HERIBERTO JARA INTL (MMVR)

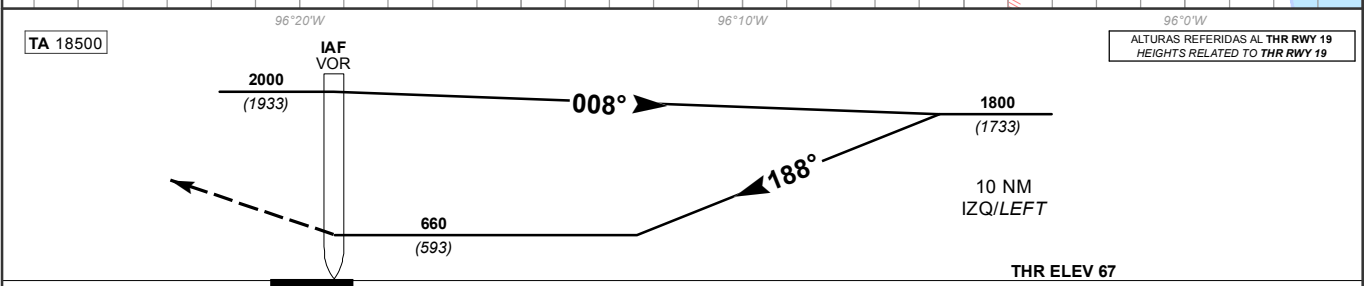
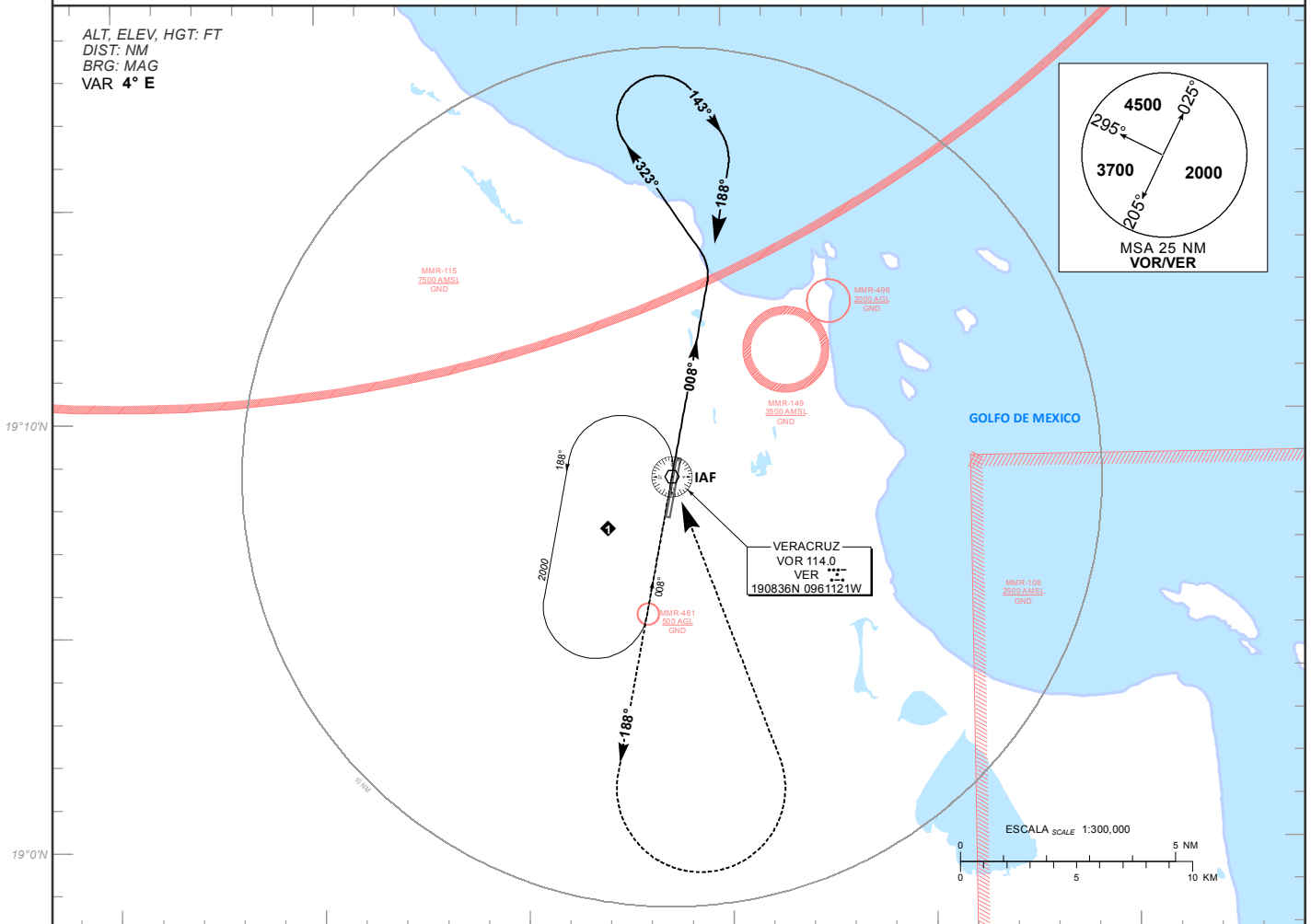
INSTRUMENT APPROACH CHART (IAC)

VOR X RWY 19

| | | | |
|---------------------|---------------------|----------------------|----------------------|
| TWR 118.5 | APP 120.4 | ATIS 127.8 | AD ELEV 89 FT |
|---------------------|---------------------|----------------------|----------------------|

APCH FRUSTRADA: ASCIENDA EN RADIAL 188° Y EFECTUE VIRAJE DE GOTA A LA IZQUIERDA DENTRO DE 10 NM HACIA EL VOR/VER HASTA LA ALTITUD MINIMA DE ESPERA.
MISSED APCH: CLIMB VIA VER VOR R-188°, THEN TURN LEFT WITHIN 10 NM TO VOR/VER AT THE MINIMUM HOLDING ALTITUDE.

RMK:



| | | | | | | | | |
|---|-----------|------|------|------|------|------|------|------|
| DISTANCIA MAXIMA DE ALEJAMIENTO 7NM DESDE EL MAPT MAXIMUM DISTANCE TO TURN 7NM FROM MAPT | GS (KTS) | 80 | 100 | 120 | 140 | 160 | 180 | 200 |
| | MIN : SEC | 5:15 | 4:12 | 3:30 | 3:00 | 2:38 | 2:20 | 2:06 |

| CAT | DIRECTO STRAIGHT-IN | CIRCULANDO CIRCLING |
|-----|--|-----------------------------------|
| | OCA (OCH) / MDA (MDH) 660 (593) | OCA (OCH) / MDA (MDH) |
| A | 1 (1600 M) | 660 (571) - 1 (1600 M) |
| B | 1 1/2 (2400 M) | 660 (571) - 1 1/2 (2400 M) |
| C | 1 3/4 (2800 M) | 700 (611) - 2 (3200 M) |

CAMBIOS: MMR-461, MMR-496