

CARTA DE APROXIMACION  
POR INSTRUMENTOS  
INSTRUMENT APPROACH  
CHART (IAC)

TWR 118.7  
APP 120.9  
ATIS 127.6

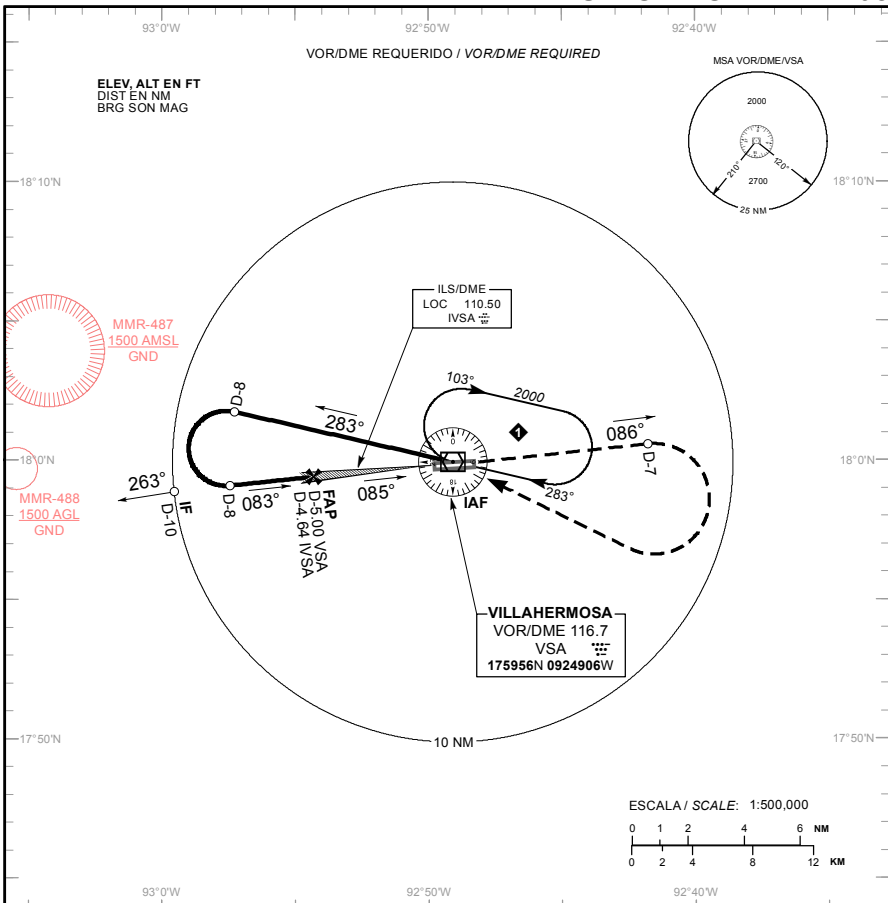
**VILLAHERMOSA**  
AEROPUERTO INTL / INTL AIRPORT  
CAP. P.A. CARLOS ROVIROSA

AD ELEV : 46 FT

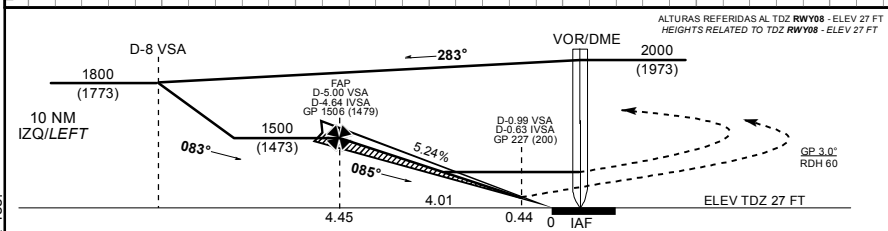
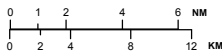
VAR 2° E

**ILS Z OR LOC Z RWY 08**

TA: 18500 FT



ESCALA / SCALE: 1:500,000



**APROXIMACION FRUSTRADA / MISSED APPROACH**

ASCIENDA EN RADIAL 086° HASTA D-7, EFECTUE VIRAJE DE GOTAA LA DERECHA DENTRO DE 10 NM HACIA EL VOR/DME/IVSA HASTA LA ALTITUD MINIMA DE ESPERA.

CLIMB VIA VSA VOR R-086° TO D-7, THEN TURN RIGHT WITHIN 10 NM TO VOR/DME/IVSA AT THE MINIMUM HOLDING ALTITUDE.

**GRADIENTE DE DESCENSO / RATE OF DESCENT**

| FAP - THR   | VEL GS (KTS) | 80   | 100  | 120  | 140  | 160  | 180  | 200  |
|-------------|--------------|------|------|------|------|------|------|------|
| 4.45 NM     | FT / MIN     | 423  | 529  | 635  | 741  | 847  | 953  | 1058 |
| 5.2% (3.0°) | MIN : SEC    | 3:20 | 2:40 | 2:14 | 1:54 | 1:40 | 1:29 | 1:20 |

ALTITUD MINIMA SEGUN DISTANCIA DME/IVSA / MINIMUM ALTITUDE ACCORDING TO DISTANCE DME/IVSA

| NM | 4           | 3         | 2         | 1         |
|----|-------------|-----------|-----------|-----------|
| FT | 1300 (1273) | 980 (953) | 660 (633) | 340 (313) |

CAMBIOS: FREQ: ATIS: MMR-487, MMR-488.

| CAT                   | A  | B | C   | D |
|-----------------------|--|---|---|---|
| CAT I COMPLETO / FULL | DA (DH) 227 (200) - 3/4 (1200 M)             |   |   |   |
| LOC COMPLETO / FULL   | OCA (OCH) / MDA (MDH) 440 (413) - 1 (1600 M) |   | 440 (413) - 1 1/4 (2000 M)                          |   |
| CIRCULANDO / CIRCLING | OCA (OCH) / MDA (MDH) 500 (454) - 1 (1600 M) |   | 500 (454) - 1 1/2 (2400 M) / 600 (554) - 2 (3200 M) |   |