

PLANO DE ESTACIONAMIENTO Y ATRAQUE DE AERONAVES /  
AIRCRAFT PARKING/DOCKING CHART

ELEV AD: 14 M

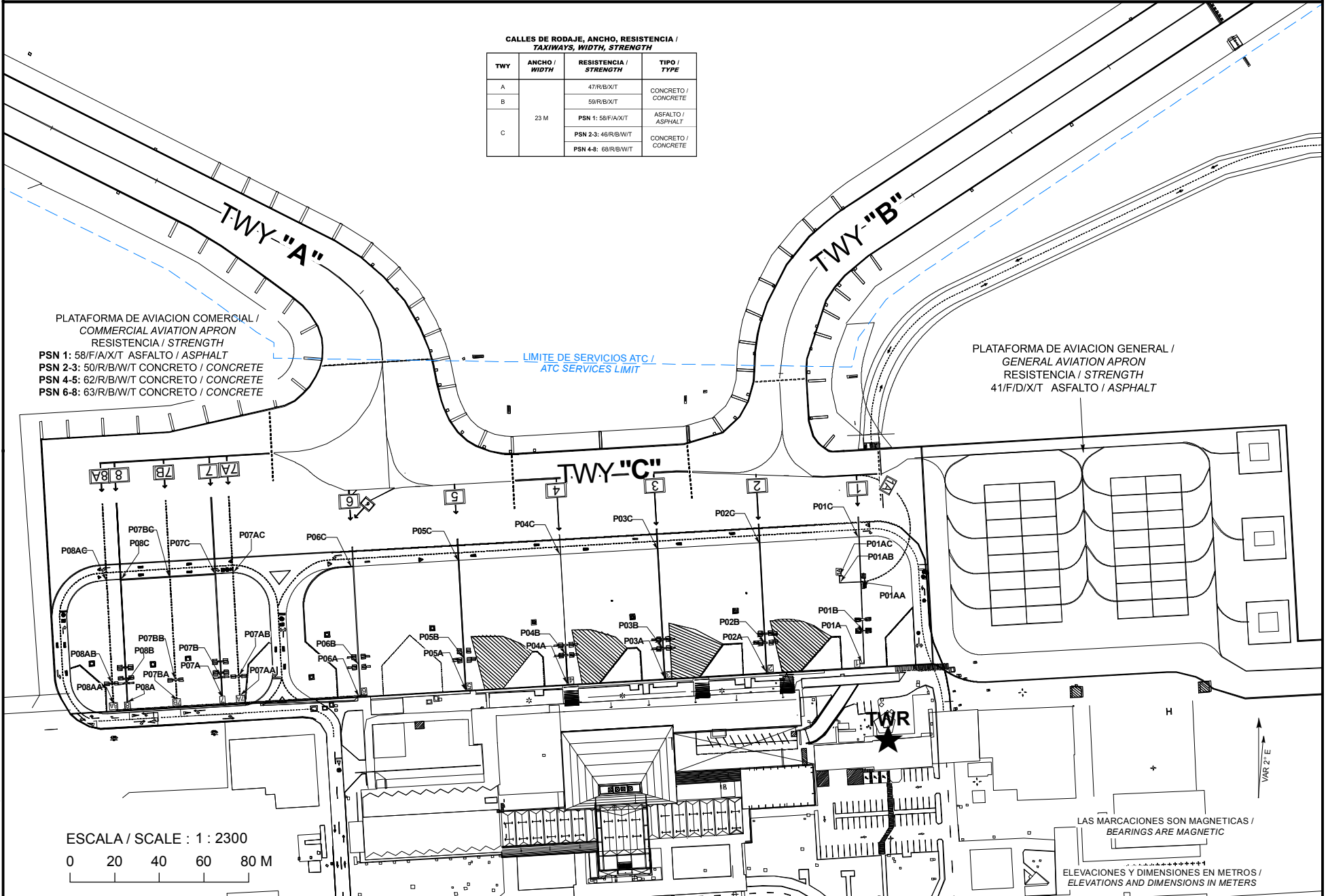
TWR	118.7
APP	120.9
ATIS	127.6

**VILLAHERMOSA**  
AEROPUERTO INTL /  
INTL AIRPORT

**CAP. P.A. CARLOS ROVIROSA**

CALLES DE RODAJE, ANCHO, RESISTENCIA /  
TAXIWAYS, WIDTH, STRENGTH

TWY	ANCHO / WIDTH	RESISTENCIA / STRENGTH	TIPO / TYPE
A	23 M	47/R/B/W/T	CONCRETO / CONCRETE
B		58/R/B/W/T	CONCRETO / CONCRETE
C		PSN 1: 58/F/A/X/T	ASFALTO / ASPHALT
		PSN 2-3: 46/R/B/W/T	CONCRETO / CONCRETE
		PSN 4-8: 68/R/B/W/T	CONCRETO / CONCRETE



CAMBIOS: FREQ ATIS

ESCALA / SCALE : 1 : 2300  
0 20 40 60 80 M

LAS MARCACIONES SON MAGNETICAS /  
BEARINGS ARE MAGNETIC  
ELEVACIONES Y DIMENSIONES EN METROS /  
ELEVATIONS AND DIMENSIONS IN METERS

**COORDENADAS INS, DE PUESTOS DE ESTACIONAMIENTO DE AERONAVES AVIACION COMERCIAL /  
COORDINATES INS, FOR AIRCRAFT STANDS, COMMERCIAL AVIATION**

PSN		LAT (N)	LONG (W)
P01	P01A	17° 59' 36.42"	092° 49' 05.21"
	P01B	17° 59' 36.87"	092° 49' 05.17"
	P01C	17° 59' 38.17"	092° 49' 05.23"
P01A	P01AA	17° 59' 37.55"	092° 49' 05.20"
	P01AB	17° 59' 37.54"	092° 49' 05.51"
	P01AC	17° 59' 37.64"	092° 49' 05.51"
P02	P02A	17° 59' 36.30"	092° 49' 06.56"
	P02B	17° 59' 36.70"	092° 49' 06.59"
	P02C	17° 59' 38.08"	092° 49' 06.67"
P03	P03A	17° 59' 36.21"	092° 49' 07.98"
	P03B	17° 59' 36.62"	092° 49' 08.07"
	P03C	17° 59' 38.00"	092° 49' 08.15"
P04	P04A	17° 59' 36.13"	092° 49' 09.45"
	P04B	17° 59' 36.52"	092° 49' 09.48"
	P04C	17° 59' 37.91"	092° 49' 09.56"
P05	P05A	17° 59' 36.04"	092° 49' 10.93"
	P05B	17° 59' 36.42"	092° 49' 10.95"
	P05C	17° 59' 37.83"	092° 49' 11.04"
P06	P06A	17° 59' 35.95"	092° 49' 12.46"
	P06B	17° 59' 36.35"	092° 49' 12.48"
	P06C	17° 59' 37.74"	092° 49' 12.57"
P07	P07A	17° 59' 35.85"	092° 49' 14.46"
	P07B	17° 59' 36.20"	092° 49' 14.48"
	P07C	17° 59' 37.63"	092° 49' 14.57"
P07A	P07AA	17° 59' 35.87"	092° 49' 14.20"
	P07AB	17° 59' 36.22"	092° 49' 14.22"
	P07AC	17° 59' 37.65"	092° 49' 14.31"
P07B	P07BA	17° 59' 35.82"	092° 49' 15.11"
	P07BB	17° 59' 36.17"	092° 49' 15.14"
	P07BC	17° 59' 37.59"	092° 49' 15.23"
P08	P08A	17° 59' 35.77"	092° 49' 15.83"
	P08B	17° 59' 36.12"	092° 49' 15.85"
	P08C	17° 59' 37.55"	092° 49' 15.94"
P08A	P08AA	17° 59' 35.76"	092° 49' 16.04"
	P08AB	17° 59' 36.11"	092° 49' 16.06"
	P08AC	17° 59' 37.54"	092° 49' 16.14"