

CARTA DE APROXIMACION
POR INSTRUMENTOS (IAC)

TULUM / FELIPE CARRILLO PUERTO INTL (MRTL)

INSTRUMENT APPROACH CHART (IAC)

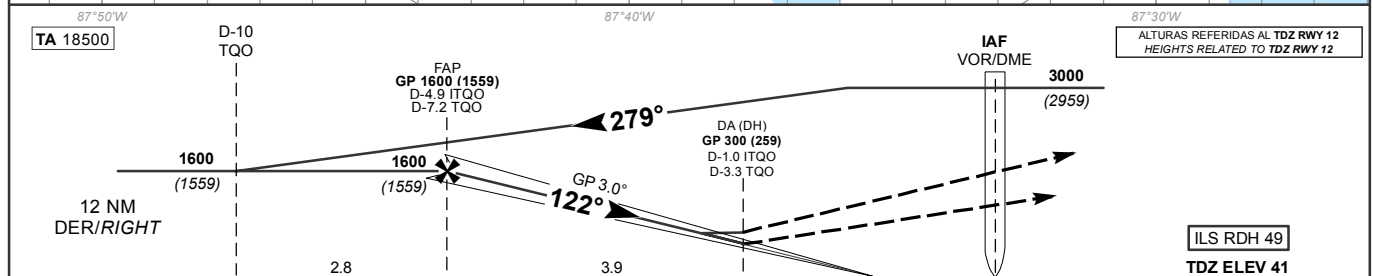
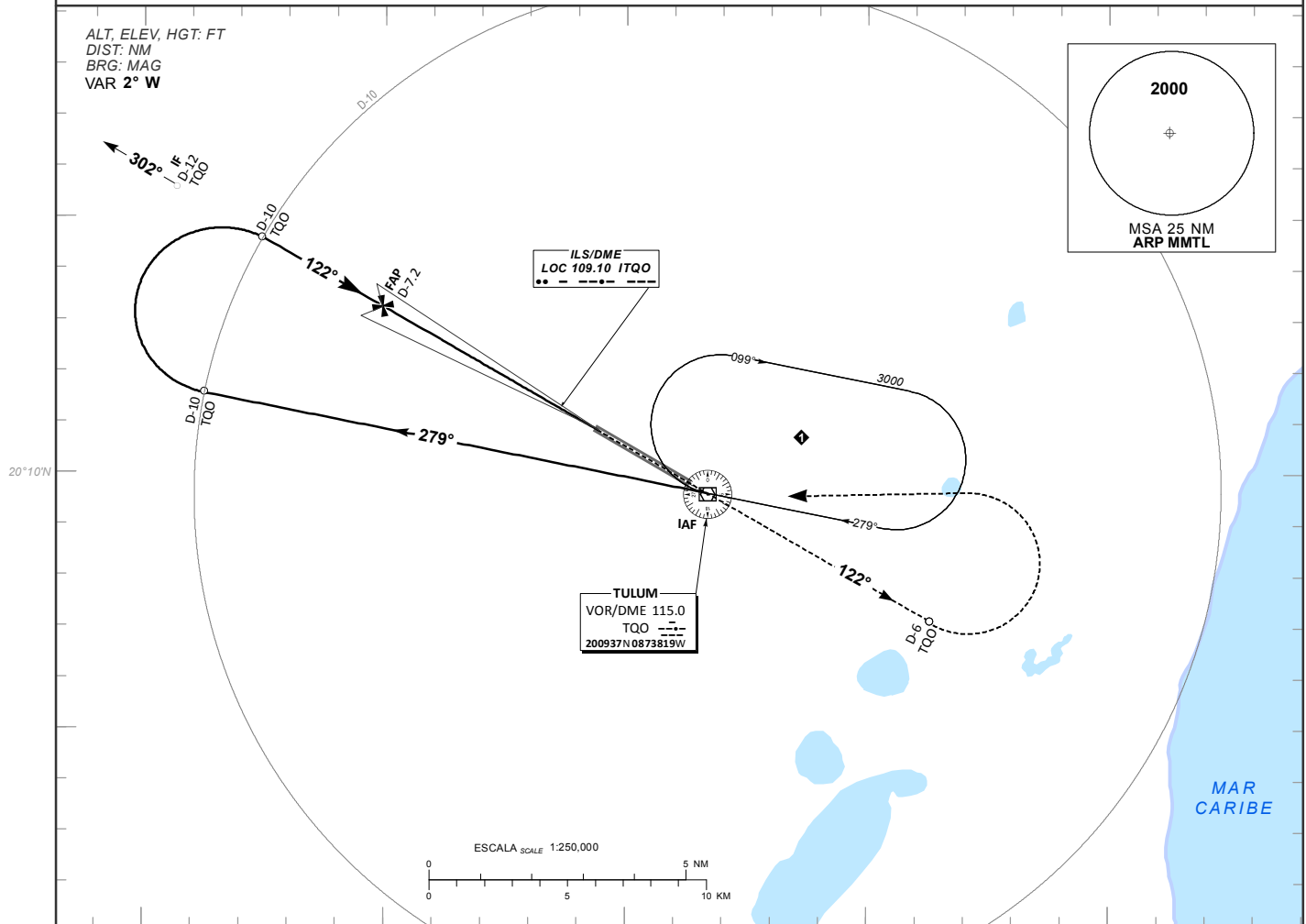
ILS Z OR LOC Z RWY 12

TWR 118.65	MMUN APP 123.2, 124.7, 123.5, 124.2, 120.8, 122.7	MMUN AUX (APP) 120.4	ATIS 127.6	AD ELEV 48 FT
----------------------	---	--------------------------------	----------------------	----------------------

APCH FRUSTRADA: ASCIENDA EN RADIAL 122° HASTA D-6. EFECTUE VIRAJE DE GOTA A LA IZQUIERDA HACIA EL VOR/DME/TQO HASTA LA ALTITUD MINIMA DE ESPERA O INSTRUCCIONES DEL ATC.

MISSED APCH: CLIMB VIA TQO VOR R-122° TO D-6, THEN TURN LEFT TO VOR/DME/TQO AT MINIMUM HOLDING ALTITUDE OR ATC INSTRUCTIONS.

RMK: -VOR/DME REQUERIDO VOR/DME REQUIRED



GRADIENTE DE DESCENSO RATE OF DESCENT	FAP-THR 4.741		5.2% (3.0°)					ALTITUD MINIMA SEGUN DISTANCIA MINIMUM ALTITUDE ACCORDING TO DISTANCE	NM	4.74	3	2	1	
	GS (KTS)	80	100	120	140	160	180		200	FT	1820	1270	950	640
	FT / MIN	422	528	634	739	845	950		1056		(1779)	(1229)	(909)	(599)
	MIN : SEC	3:33	2:51	2:22	2:02	1:47	1:35	1:25						

C A M B I O S : A D E L E V.	CAT	CAT I	LOC	CIRCULANDO CIRCLING
	A	DA (DH) 300 (259)	OCA (OCH) / MDA (MDH) 500 (459)	OCA (OCH) / MDA (MDH)
	B	1/2 (800 M)	1 (1600 M)	580 (532) - 1 (1600 M)
	C		1 3/8 (2200 M)	640 (592) - 1 1/2 (2400 M)
D	640 (592) - 2 (3200 M)			