

CARTA DE APROXIMACION
POR INSTRUMENTOS (IAC)

CANCUN / CANCUN INTL (MMUN)

VOR Z RWY 12L

INSTRUMENT APPROACH CHART (IAC)

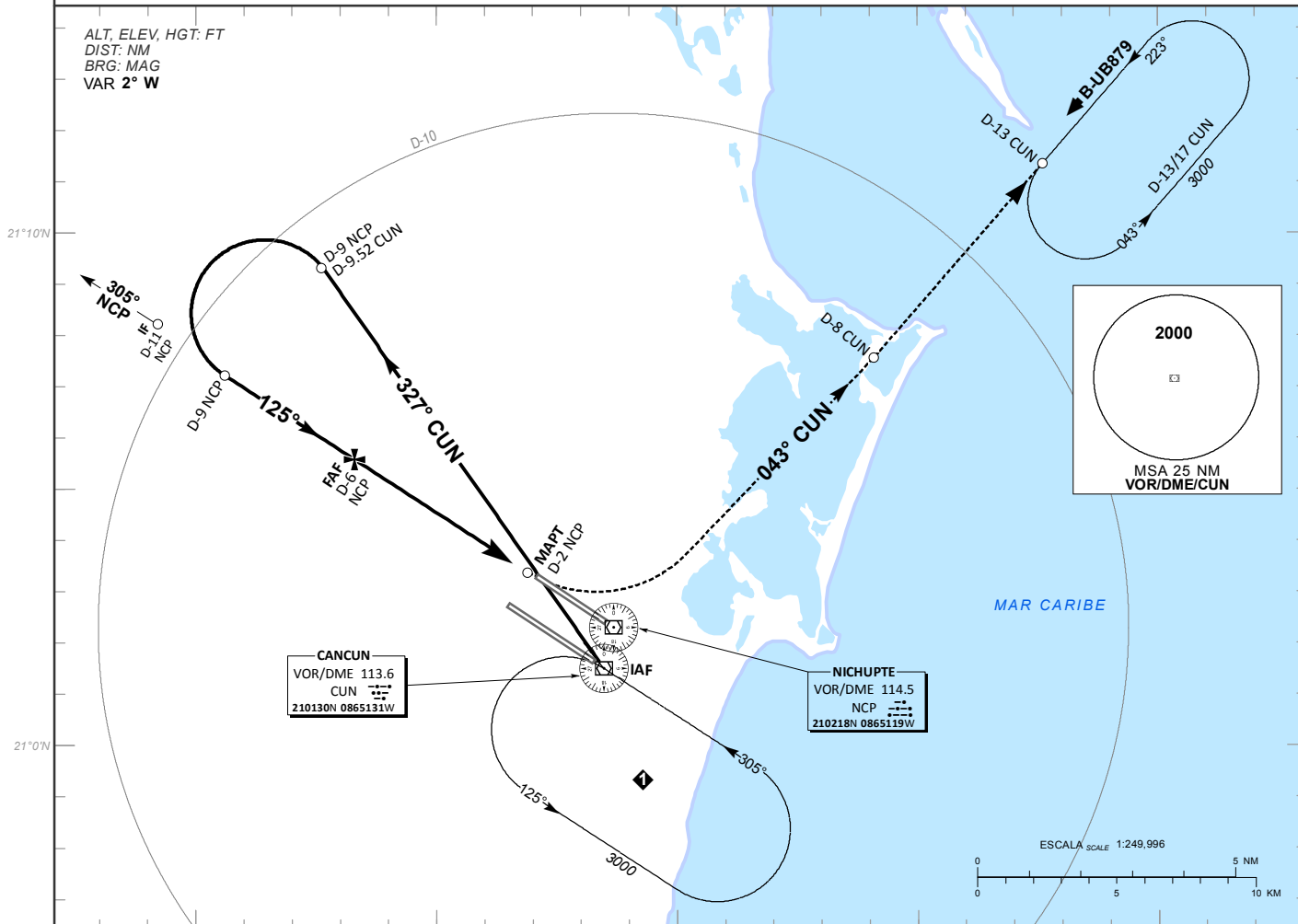
| | | | | | | | |
|---------------------|------------------|--|------------------|---------------|---------------------|---------------------|---------------|
| TWR 118.6, 118.1 | AUX TWR 118.9 | APP 123.5, 124.2, 120.8, 123.2, 124.7, 122.7 | AUX APP 120.4 | ATIS 127.7 | MM CZ ATIS 127.8 | MM TL ATIS 127.6 | AD ELEV 22 FT |
|---------------------|------------------|--|------------------|---------------|---------------------|---------------------|---------------|

APCH FRUSTRADA: EFECTUE VIRAJE A LA IZQUIERDA, CONTINUE EN RADIAL 043° CUN (MANTENGA 2000 FT HASTA D-8 CUN), PROSIGA EN ASCENSO HASTA EL PATRON DE ESPERA D-13/17 CUN, HASTA ALCANZAR 3000 FT Y MANTENGA DE ACUERDO A INSTRUCCIONES DEL ATC.

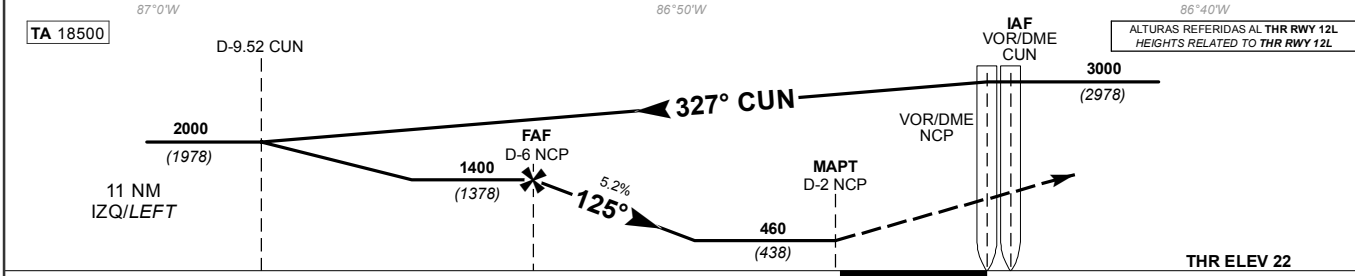
MISSED APCH: TURN LEFT ON CUN VOR R-043° OUTBOUND (MAINTAIN 2000 FT UNTIL D-8 CUN) CONTINUE CLIMBING TO 3000 FT AND HOLD AT D-13/17 CUN THEN AS INSTRUCTED BY ATC.

RMK: -DME REQUERIDO DME REQUIRED

-RESTRICCION DE VELOCIDAD: VER SECCION ENR 1.1-16 SPEED RESTRICTION: SEE ENR SECTION 1.1-16



CAMBIOS: DESIGNADOR DE CARTA; DESIGNADOR DE PROCEDIMIENTO.



| GRADIENTE DE DESCENSO RATE OF DESCENT | FAF-THR 4.24 | | | | | | | | 5.2% | | | | | | | | ALTIMUD MINIMA SEGUN DISTANCIA DME/NCP MINIMUM ALTITUDE ACCORDING TO DISTANCE DME/NCP | NM | 6 | 5 | 4 | 3 |
|---------------------------------------|--------------|------|------|------|------|------|------|-----|----------|-----|-----|-----|-----|-----|-----|------|---|----|---|---|---|---|
| | GS (KTS) | 80 | 100 | 120 | 140 | 160 | 180 | 200 | FT / MIN | 418 | 522 | 626 | 731 | 835 | 940 | 1044 | | | | | | |
| MIN : SEC | 3:00 | 2:24 | 2:00 | 1:43 | 1:30 | 1:20 | 1:12 | | | | | | | | | | | | | | | |

| CAT | DIRECTO STRAIGHT-IN | | CIRCULANDO CIRCLING | |
|-----|-----------------------|-----------|----------------------------|-----------------------|
| | OCA (OCH) / MDA (MDH) | 460 (438) | CNL SECTOR "S" RWY 12L/30R | OCA (OCH) / MDA (MDH) |
| A | 1 | (1600 M) | 480 (458) - 1 | (1600 M) |
| B | 1 1/4 | (2000 M) | 580 (558) - 1 1/2 | (2400 M) |
| C | 1 1/2 | (2400 M) | 580 (558) - 2 | (3200 M) |