

CARTA DE APROXIMACION
POR INSTRUMENTOS
INSTRUMENT APPROACH
CHART (IAC)

TWR 118.4
APP 119.1
ATIS 127.75

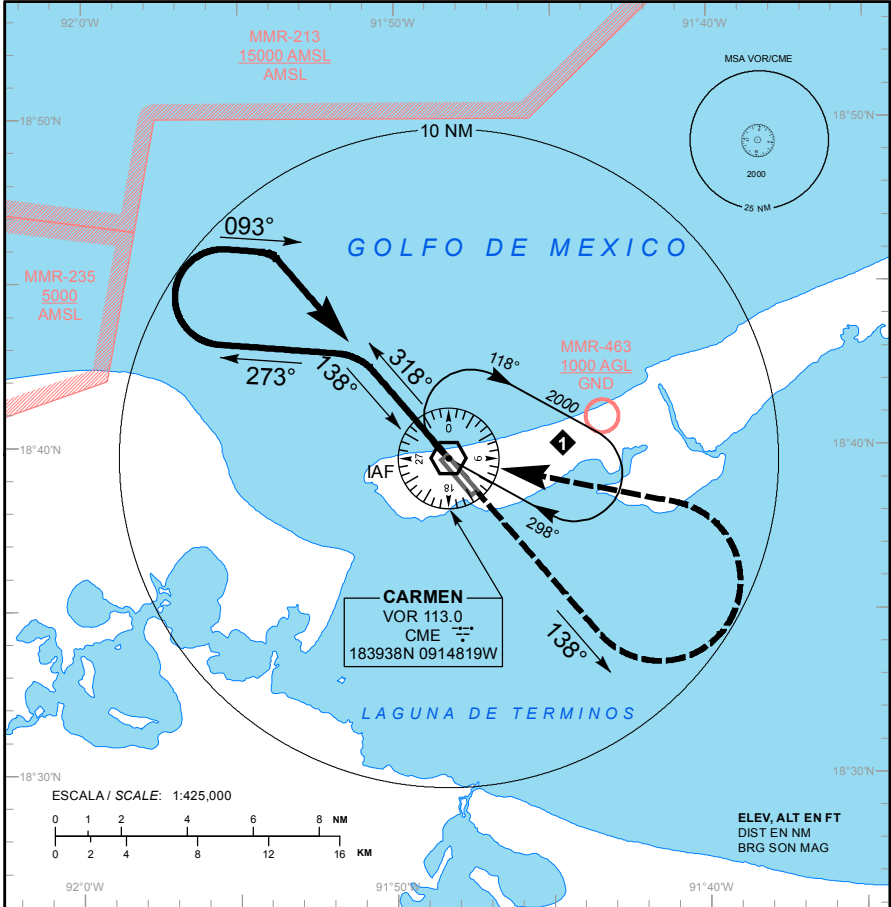
ELEV AD 10 FT
VAR 1° E

CIUDAD DEL CARMEN

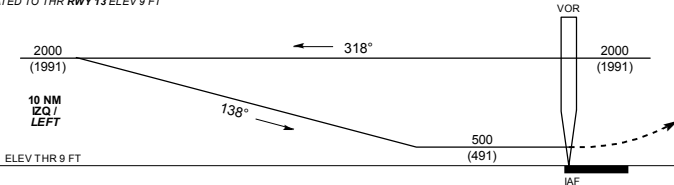
AEROPUERTO INTL / INTL AIRPORT

TA: 18500 FT

VOR X RWY 13



ALTURAS REFERIDAS AL THR RWY 13 ELEV 9 FT
HEIGHTS RELATED TO THR RWY 13 ELEV 9 FT



APROXIMACION FRUSTRADA / MISSED APPROACH

ASCIENDA EN RADIAL 138°. EFECTUE VIRAJE DE GOTA A LA IZQUIERDA DENTRO DE 10 NM HACIA EL VOR/CME HASTA LA ALTITUD MINIMA DE ESPERA.

CLIMB VIA CME VOR R-138°, THEN TURN LEFT WITHIN 10 NM TO VOR/CME AT THE MINIMUM HOLDING ALTITUDE.

DISTANCIA MAXIMA DE ALEJAMIENTO 7 NM DESDE MAPL.
MAXIMUM DISTANCE TO TURN 7 NM FROM MAPL.

| VEL GS (KTS) | 80 | 100 | 120 | 140 | 160 | 180 | 200 |
|--------------|------|------|------|------|------|------|------|
| MIN : SEC | 5:15 | 4:12 | 3:30 | 3:00 | 2:37 | 2:20 | 2:06 |

CAMBIOS: MMR-463

| CAT | A | B | C | D |
|---------------------|--|----------------------------|----------------------------|----------------------------|
| - | | | | |
| DIRECTO/DIRECT | OCA (OCH) / MDA (MDH) 500 (491) - 1 (1600 M) | 500 (491) - 1 1/4 (2000 M) | 500 (491) - 1 1/2 (2400 M) | 500 (491) - 1 1/2 (2400 M) |
| CIRCULANDO CIRCLING | OCA (OCH) / MDA (MDH) 500 (490) - 1 (1600 M) | 500 (490) - 1 1/2 (2400 M) | 500 (490) - 1 1/2 (2400 M) | 560 (550) - 2 (3200 M) |